

HORN in F 1

# OVER TUBE

## Introduction to "Hispanica" (Concert Band Version)

♩ = 120

by ILIO VOLANTE

Musical score for "The Rose Tree" in 4/4 time. The score is written for a piano and a vocal line. The key signature has one flat (B-flat), and the time signature is 4/4.

**Section A:** The piano part begins with a forte (*f*) dynamic, featuring a triplet of eighth notes and a triplet of sixteenth notes. The vocal line starts with a half note, followed by a quarter note, and then a half note.

**Section B:** The piano part continues with a mezzo-piano (*mp*) dynamic, featuring a triplet of eighth notes and a triplet of sixteenth notes. The vocal line continues with a half note, followed by a quarter note, and then a half note.

**Section C:** The piano part features a forte (*f*) dynamic, with a first ending (1.) and a second ending (2.). The vocal line continues with a half note, followed by a quarter note, and then a half note.

**Section D:** The piano part continues with a mezzo-piano (*mp*) dynamic, featuring a triplet of eighth notes and a triplet of sixteenth notes. The vocal line continues with a half note, followed by a quarter note, and then a half note.

**Section E:** The piano part continues with a mezzo-piano (*mp*) dynamic, featuring a triplet of eighth notes and a triplet of sixteenth notes. The vocal line continues with a half note, followed by a quarter note, and then a half note.

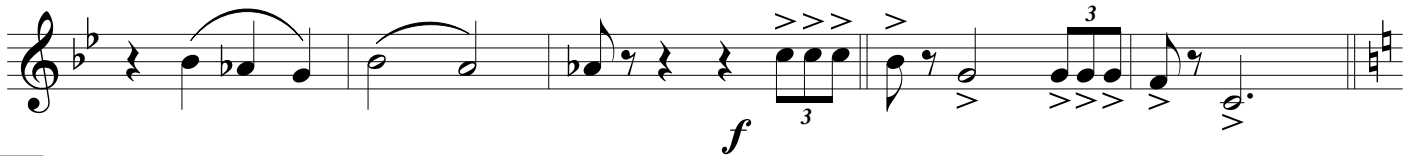
OVER TUBE -Illo Volante - HORN in F 1



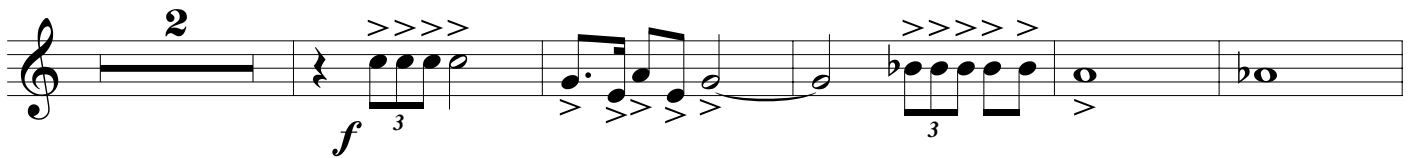
**F**



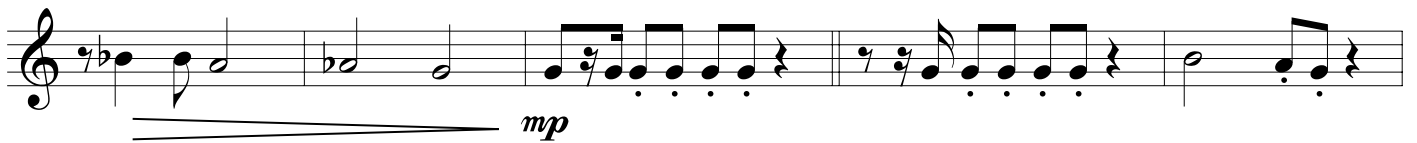
**G**



**H**



**I**



**J**



**K**

**L**

