

CLARINET in Bb 1

OVER TUBE

Introduction to "Hispanica" (Concert Band Version)

by ILIO VOLANTE

$\text{♩} = 120$

pp *f* *ff* *ff* *b* *mf* *ff* *f* *mf* *f* *ff* *f* *3*

OVER TUBE -Ilio Volante - CLARINET in Bb 1

D

mf

Staff D: Musical notation for section D, starting with a treble clef and a key signature of one sharp (F#). The music begins with a rest followed by a quarter note G4, then a series of eighth notes: A4, B4, C5, B4, A4, G4. This is followed by a double bar line and a repeat sign. The second measure of the repeat starts with a half note G4, then a quarter note A4, followed by eighth notes B4, C5, B4, A4, G4. The section ends with a quarter note G4.

E

Staff E: Musical notation for section E, starting with a treble clef and a key signature of one flat (Bb). The music begins with a quarter note G4, followed by eighth notes A4, B4, C5, B4, A4, G4. This is followed by a double bar line and a repeat sign. The second measure of the repeat starts with a half note G4, then a quarter note A4, followed by eighth notes B4, C5, B4, A4, G4. The section ends with a quarter note G4.

Staff continuation: Musical notation for the continuation of section E. It starts with a quarter note G4, followed by eighth notes A4, B4, C5, B4, A4, G4. This is followed by a double bar line and a repeat sign. The second measure of the repeat starts with a half note G4, then a quarter note A4, followed by eighth notes B4, C5, B4, A4, G4. The section ends with a quarter note G4.

Staff continuation: Musical notation for the continuation of section E. It starts with a quarter note G4, followed by eighth notes A4, B4, C5, B4, A4, G4. This is followed by a double bar line and a repeat sign. The second measure of the repeat starts with a half note G4, then a quarter note A4, followed by eighth notes B4, C5, B4, A4, G4. The section ends with a quarter note G4.

F

Staff F: Musical notation for section F, starting with a treble clef and a key signature of one flat (Bb). The music begins with a quarter note G4, followed by eighth notes A4, B4, C5, B4, A4, G4. This is followed by a double bar line and a repeat sign. The second measure of the repeat starts with a half note G4, then a quarter note A4, followed by eighth notes B4, C5, B4, A4, G4. The section ends with a quarter note G4.

G

f

Staff G: Musical notation for section G, starting with a treble clef and a key signature of one flat (Bb). The music begins with a quarter note G4, followed by eighth notes A4, B4, C5, B4, A4, G4. This is followed by a double bar line and a repeat sign. The second measure of the repeat starts with a half note G4, then a quarter note A4, followed by eighth notes B4, C5, B4, A4, G4. The section ends with a quarter note G4.

H

mp f

Staff H: Musical notation for section H, starting with a treble clef and a key signature of one sharp (F#). The music begins with a quarter note G4, followed by eighth notes A4, B4, C5, B4, A4, G4. This is followed by a double bar line and a repeat sign. The second measure of the repeat starts with a half note G4, then a quarter note A4, followed by eighth notes B4, C5, B4, A4, G4. The section ends with a quarter note G4.

Staff continuation: Musical notation for the continuation of section H. It starts with a quarter note G4, followed by eighth notes A4, B4, C5, B4, A4, G4. This is followed by a double bar line and a repeat sign. The second measure of the repeat starts with a half note G4, then a quarter note A4, followed by eighth notes B4, C5, B4, A4, G4. The section ends with a quarter note G4.

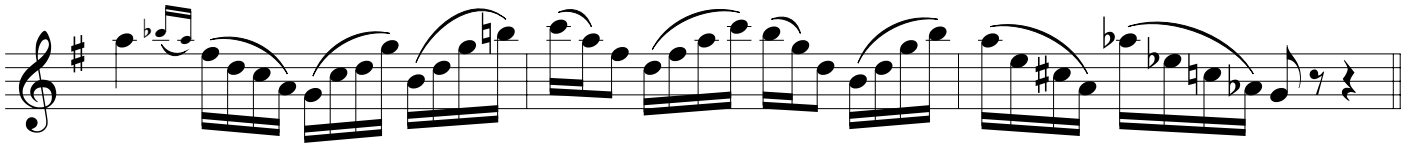
I

mf

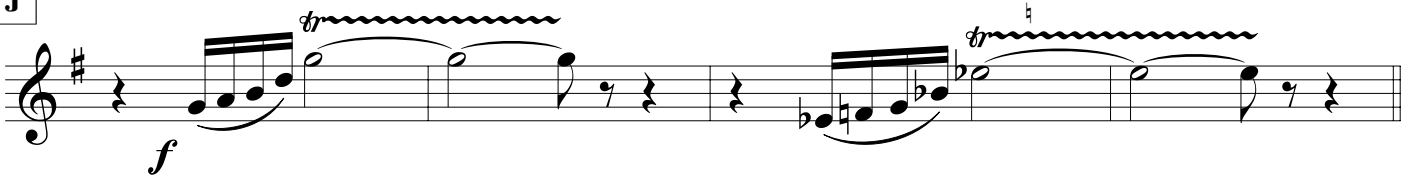
Staff I: Musical notation for section I, starting with a treble clef and a key signature of one sharp (F#). The music begins with a quarter note G4, followed by eighth notes A4, B4, C5, B4, A4, G4. This is followed by a double bar line and a repeat sign. The second measure of the repeat starts with a half note G4, then a quarter note A4, followed by eighth notes B4, C5, B4, A4, G4. The section ends with a quarter note G4.

Staff continuation: Musical notation for the continuation of section I. It starts with a quarter note G4, followed by eighth notes A4, B4, C5, B4, A4, G4. This is followed by a double bar line and a repeat sign. The second measure of the repeat starts with a half note G4, then a quarter note A4, followed by eighth notes B4, C5, B4, A4, G4. The section ends with a quarter note G4.

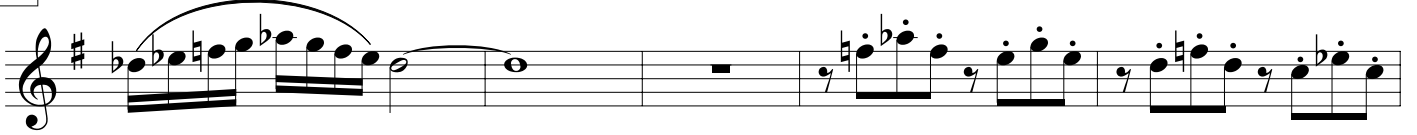
OVER TUBE -Ilio Volante - CLARINET in Bb 1



J



K



L

