

Cymbals & Bass Drum

MALVERIDA

Composed for the IX Symphony Composition Contest for Bands
"City of Torrevieja" - Alicante - Spain (2011)

by ILIO VOLANTE

♩ = 80

A

B

C

D

Musical notation for sections A, B, C, and D. Section A is a 2-measure rest. Section B is a 4-measure rest. Section C is a 4-measure rest. Section D is a 4-measure rest. The notation includes a common time signature (C) and a repeat sign at the end of section D.

E

F

G

f
♩ = 110

Musical notation for sections E, F, and G. Section E consists of two measures of quarter notes. Section F consists of two measures of eighth notes. Section G consists of a 2-measure rest followed by a 4-measure rest. The notation includes a common time signature (C) and a repeat sign at the end of section G.

H

I

J

mp

Musical notation for sections H, I, and J. Section H is a 2-measure rest. Section I consists of two measures of quarter notes. Section J consists of two measures of quarter notes. The notation includes a common time signature (C) and a repeat sign at the end of section J.

37

K

Musical notation for section K, starting at measure 37. It consists of two measures of quarter notes. The notation includes a common time signature (C) and a repeat sign at the end of section K.

L

M

N

O

f

p

Musical notation for sections L, M, N, and O. Section L consists of two measures of eighth notes. Section M consists of two measures of quarter notes. Section N is a 2-measure rest. Section O consists of two measures of quarter notes. The notation includes a common time signature (C) and a repeat sign at the end of section O.

51

P

Rim...

Musical notation for section P, starting at measure 51. It consists of two measures of quarter notes. The notation includes a common time signature (C) and a repeat sign at the end of section P.

Q

R

Musical notation for sections Q and R. Section Q consists of two measures of quarter notes. Section R consists of two measures of quarter notes. The notation includes a common time signature (C) and a repeat sign at the end of section R.

S

Normal...

f

Musical notation for section S, starting at measure 51. It consists of two measures of quarter notes. The notation includes a common time signature (C) and a repeat sign at the end of section S.

T

U

p

Musical notation for sections T and U. Section T consists of two measures of quarter notes. Section U consists of two measures of quarter notes. The notation includes a common time signature (C) and a repeat sign at the end of section U.

V

W

3

3

f

f

Musical notation for sections V and W. Section V consists of two measures of quarter notes. Section W consists of two measures of quarter notes. The notation includes a common time signature (C) and a repeat sign at the end of section W.

MALVERIDA - Ilio Volante - CYMBALS & BASS DRUM

X ♩ = 130

2 Y

mp *rall.*

Z AA BB CC

3 *f* 4 *mp*

DD EE

4

FF GG HH

mf *f*

II JJ Rim...

2

KK LL MM NN

2 2 4 ...) 2 8

OO PP

8 *f*

QQ RR SS TT

8 8 8 8

ff

UU

mf

VV

f

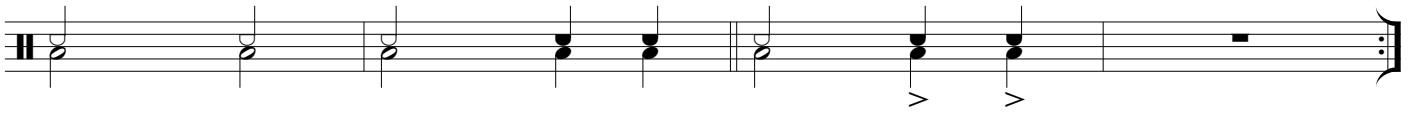
MALVERIDA - Ilio Volante - CYMBALS & BASS DRUM

WW



XX

1.



YY

2.



ff

ZZ



AAA



fff

BBB



CCC



DDD



EEE



FFF



sfz