

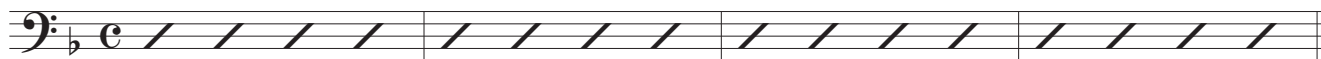
Bass Clef Instruments

# HIGH HI

Jazz Latin Standard - Bossa

♩ = 134 F maj7

by ILIO VOLANTE



**A**

Section A consists of four staves of music. The first staff begins with an F major 7 chord and contains a melodic line with eighth and quarter notes. The second staff continues the melody with a D minor 7 chord. The third staff features a B-flat major 7 chord and a B-flat minor 7 chord. The fourth staff concludes with a G minor 7 chord and a D-flat 7 chord. Various chords are indicated above the notes, including F maj7, A7, Dm7, F7, Bbmaj7, Bbm7, Fmaj7, D7, Gm7, and Db7.

**B**

Section B consists of four staves of music. The first staff begins with an F major 7 chord and contains a melodic line with eighth and quarter notes. The second staff continues the melody with a D minor 7 chord. The third staff features a B-flat major 7 chord, a B-flat minor 7 chord, and an F major 7 chord. The fourth staff concludes with a G minor 7 chord, a D-flat 7 chord, an F major 7 chord, and a D-flat diminished chord. Various chords are indicated above the notes, including F maj7, A7, Dm7, F7, Bbmaj7, Bbm7, Fmaj7, D7(b9), Gm7, Db7, Fmaj7, and Dbdim.

**C**

Section C consists of two staves of music. The first staff begins with an F major 7 chord and contains a melodic line with eighth and quarter notes. The second staff continues the melody with a D minor 7 chord. The third staff features an A7 chord. The fourth staff concludes with an F7 chord. Various chords are indicated above the notes, including F maj7, A7, Dm7, and F7.

HIGH HI - Ilio Volante BASS CLEF INSTRUMENTS

B $\flat$ maj7                      B $\flat$ m7                      F maj7                      D7



Gm7                      D $\flat$ 7                      Gm7



**D** F maj7                      A7



Dm7                      F7




B $\flat$ maj7                      B $\flat$ m7                      F maj7                      D7(b9)



Gm7                      D $\flat$ 7                      F maj7                      D $\flat$ dim



**E** F maj7                      A7



Dm7                      F7



B $\flat$ maj7                      B $\flat$ m7                      F maj7                      D7



Gm7                      D $\flat$ 7                      Gm7



F maj7                      G $\flat$ maj7                      F maj7                      G $\flat$ maj7                      F maj7

