

Bass Trombone

# GIOIA O DOLORE

For Voice & Big Band

♩ = 106

A

Words & Music by ILIO VOLANTE

Musical notation for section A, first staff. Bass clef, key signature of one sharp (F#), common time (C). The staff begins with a whole rest, followed by a quarter rest, then a series of eighth and quarter notes with slurs and accents. The dynamic marking *mf* is present.

Musical notation for section A, second staff. Continuation of the first staff with eighth and quarter notes, slurs, and accents.

B

C

Musical notation for sections B and C. Section B is a whole rest with the number 12 above it. Section C is a whole rest with the number 11 above it. The staff ends with a quarter note and a half note.

D

Musical notation for section D, first staff. Bass clef, key signature of one sharp (F#), common time (C). The staff contains eighth and quarter notes with slurs and accents.

Musical notation for section D, second staff. Continuation of the first staff with eighth and quarter notes, slurs, and accents.

E

Musical notation for section E, first staff. Bass clef, key signature of one sharp (F#), common time (C). The staff contains a whole rest, followed by eighth and quarter notes with slurs and accents.

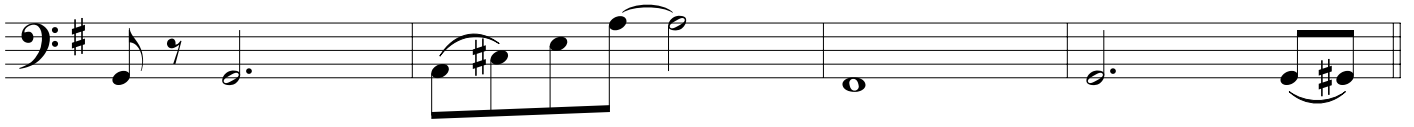
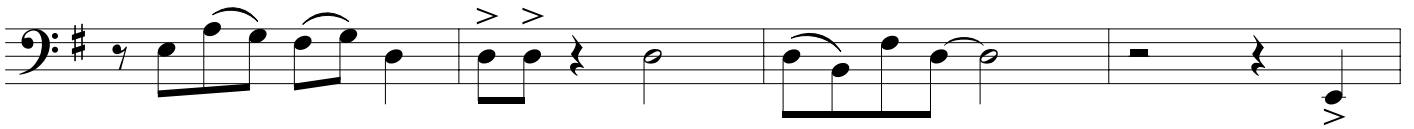
Musical notation for section E, second staff. Continuation of the first staff with eighth and quarter notes, slurs, and accents.

Musical notation for section E, third staff. Continuation of the first staff with eighth and quarter notes, slurs, and accents.

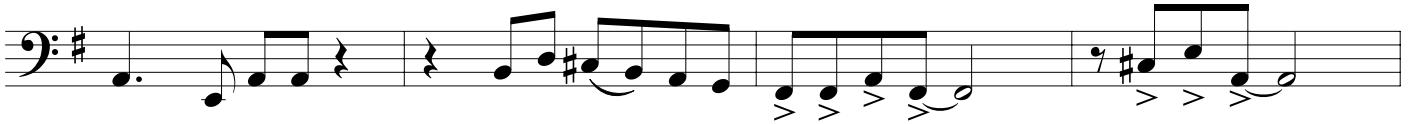
F

Musical notation for section F, first staff. Bass clef, key signature of one sharp (F#), common time (C). The staff contains a whole rest, followed by eighth and quarter notes with slurs and accents.

GIOIA O DOLORE - Ilio Volante - BASS TROMBONE



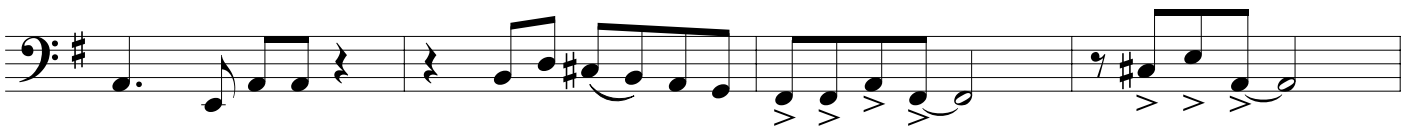
G



H



I



J



Ad Lib. & Fade Out...

