

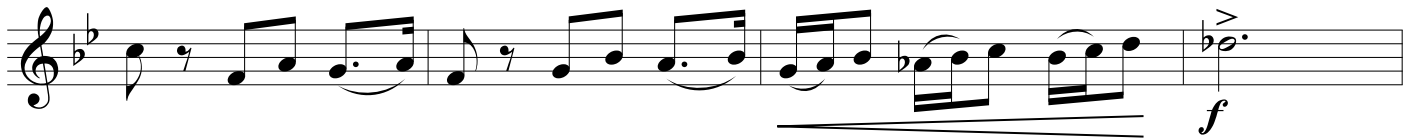
DOUBLE PERSPECTIVE

Version for Alto Sax & Tenor Sax

Tenor Sax

♩ = 100

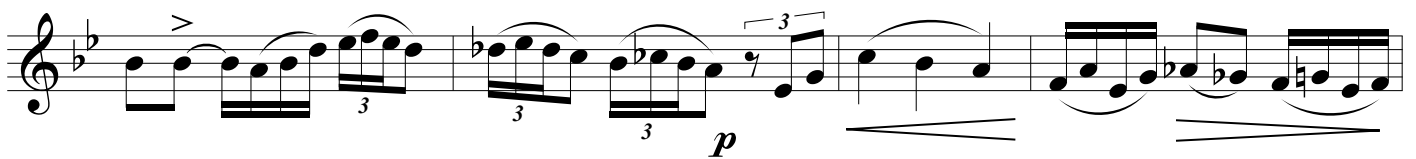
by ILIO VOLANTE



A



B



DOUBLE PERSPECTIVE - Ilio Volante - TENOR SAX

C

Section C consists of two staves of music in 4/4 time. The first staff begins with a dynamic marking of *f* and contains measures 1 and 2. The second staff contains measures 3 and 4, starting with a dynamic marking of *p*. The music features a mix of quarter and eighth notes, with some notes beamed together and slurs.

D

Section D consists of one staff of music in 4/4 time, containing measures 5 through 8. It starts with a dynamic marking of *f*, followed by *pp*. The music includes quarter notes, eighth notes, and a triplet of eighth notes in the final measure.

E

Section E consists of six staves of music in 4/4 time, containing measures 9 through 16. The first staff begins with a dynamic marking of *f*. The second staff includes first and second endings, with a dynamic marking of *f* and a repeat sign. The third staff starts with a dynamic marking of *p*. The fourth and fifth staves continue the melodic line. The sixth staff concludes with a dynamic marking of *f*, a *rit.* marking, and a final *sfz* dynamic marking.