

ANIMA E VITA

Horn in Eb 1

♩ = 74

A

by ILIO VOLANTE

First line of musical notation for section A, starting with a treble clef, key signature of three sharps (F#, C#, G#), and common time (C). The first measure is a whole rest, followed by a series of quarter notes: G4, A4, B4, C5, B4, A4, G4, F#4, E4, D4, C4. The dynamic marking *fp* is placed below the first measure.

Second line of musical notation for section A, continuing the sequence of quarter notes: D4, C4, B3, A3, G3, F#3, E3, D3, C3, B2, A2, G2, F#2, E2, D2, C2.

B

First line of musical notation for section B, starting with a treble clef, key signature of three sharps, and common time. The first measure is a whole rest, followed by a series of quarter notes: G4, A4, B4, C5, B4, A4, G4, F#4, E4, D4, C4. The dynamic marking *mp* is placed below the first measure.

Second line of musical notation for section B, continuing the sequence of quarter notes: D4, C4, B3, A3, G3, F#3, E3, D3, C3, B2, A2, G2, F#2, E2, D2, C2.

Third line of musical notation for section B, continuing the sequence of quarter notes: D4, C4, B3, A3, G3, F#3, E3, D3, C3, B2, A2, G2, F#2, E2, D2, C2.

C

First line of musical notation for section C, starting with a treble clef, key signature of three sharps, and common time. The first measure is a whole rest, followed by a series of quarter notes: G4, A4, B4, C5, B4, A4, G4, F#4, E4, D4, C4. The dynamic marking *mp* is placed below the first measure.

D

First line of musical notation for section D, starting with a treble clef, key signature of three sharps, and common time. The first measure is a whole rest, followed by a series of quarter notes: G4, A4, B4, C5, B4, A4, G4, F#4, E4, D4, C4. The dynamic marking *f* is placed below the first measure.

Second line of musical notation for section D, continuing the sequence of quarter notes: D4, C4, B3, A3, G3, F#3, E3, D3, C3, B2, A2, G2, F#2, E2, D2, C2.

Third line of musical notation for section D, continuing the sequence of quarter notes: D4, C4, B3, A3, G3, F#3, E3, D3, C3, B2, A2, G2, F#2, E2, D2, C2.

E

First line of musical notation for section E, starting with a treble clef, key signature of three sharps, and common time. The first measure is a whole rest, followed by a series of quarter notes: G4, A4, B4, C5, B4, A4, G4, F#4, E4, D4, C4. The dynamic marking *p* is placed below the first measure.

ANIMA E VITA - Ilio Volante - HORN in Eb 1



F



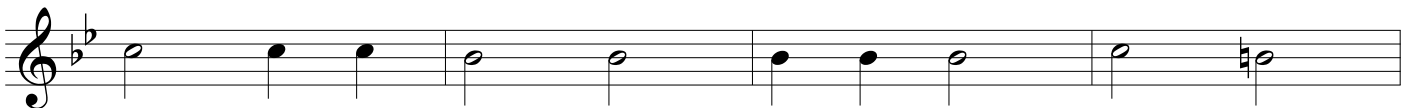
mp



G



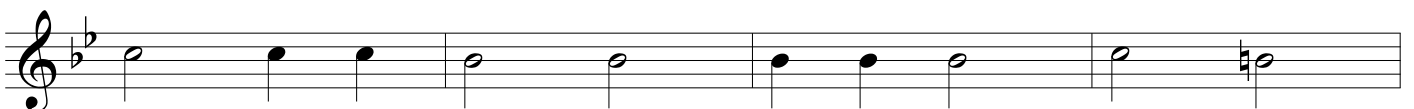
mf



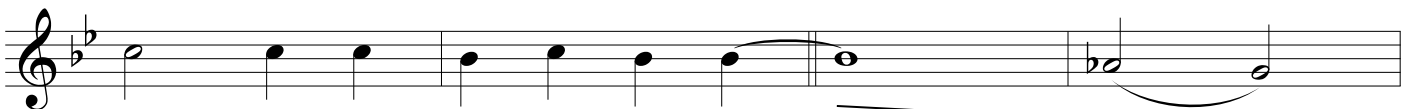
H **Largo Grandioso** ♩ = 50



f



I



mp

