

# ALTURE MISTICHE

## Version for Alto Sax & Strings

Viola

... nel sogno era una montagna  
che traspariva dalle nuvole  
facendo felice il mio cuore  
di poter contemplare quel rassicurante scenario.  
Mentre lo sguardo si perdeva  
nell'immensità di tali alture...

by ILIO VOLANTE

♩ = 58

A

First staff of music for section A. It begins with a whole rest, followed by a double bar line and a fermata. The music then starts with a half note G2, followed by a half note F2, and a half note E2. The dynamic is *pp*. There are hairpins for crescendo and decrescendo.

Second staff of music for section A. It continues with a half note D2, a half note C2, and a half note B1. The dynamic is *pp*. There are hairpins for crescendo and decrescendo.

B

First staff of music for section B. It starts with a half note G2, followed by a half note F2, and a half note E2. The dynamic is *pp*. There are hairpins for crescendo and decrescendo.

Second staff of music for section B. It continues with a half note D2, a half note C2, and a half note B1. The dynamic is *pp*. There are hairpins for crescendo and decrescendo.

*poco rit.* *a tempo*

Third staff of music for section B. It starts with a half note G2, followed by a half note F2, and a half note E2. The dynamic is *p*. There are hairpins for crescendo and decrescendo.

Fourth staff of music for section B. It continues with a half note D2, a half note C2, and a half note B1. The dynamic is *p*. There are hairpins for crescendo and decrescendo.

C

First staff of music for section C. It starts with a half note G2, followed by a half note F2, and a half note E2. The dynamic is *f*. There are hairpins for crescendo and decrescendo.

Second staff of music for section C. It continues with a half note D2, a half note C2, and a half note B1. The dynamic is *mf*. There are hairpins for crescendo and decrescendo.

D

First staff of music for section D. It starts with a half note G2, followed by a half note F2, and a half note E2. The dynamic is *mf*. There are hairpins for crescendo and decrescendo.

Second staff of music for section D. It continues with a half note D2, a half note C2, and a half note B1. The dynamic is *mf*. There are hairpins for crescendo and decrescendo.

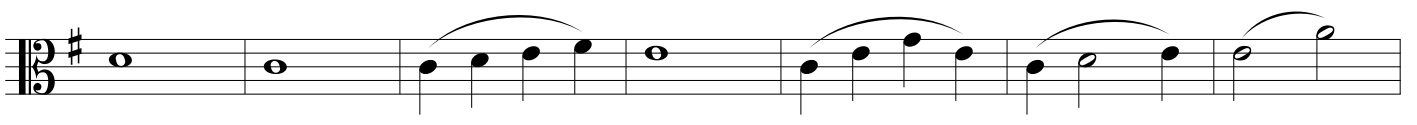
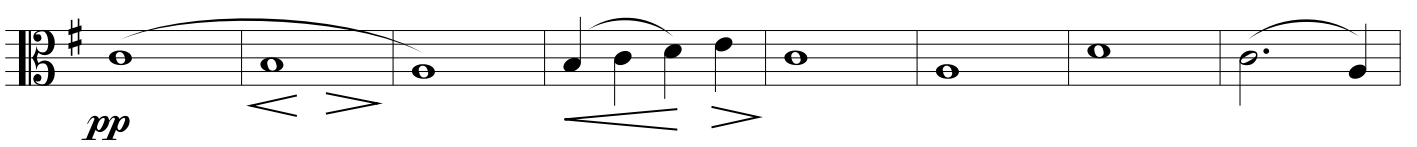
ALTURE MISTICHE - Ilio Volante - VIOLA



E



F



G



H

