

Pièce symphonique N°4

(La gare de Mezzana)

Andante

D. Vignon

Basson 2

24

7

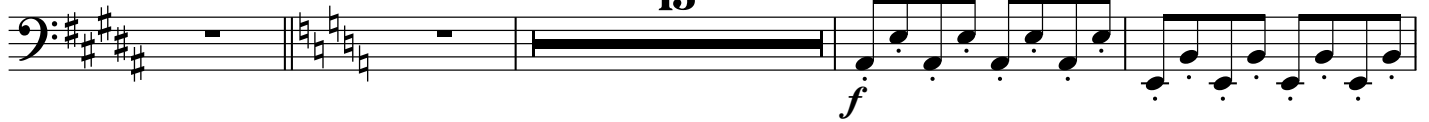
8



41

Allegro

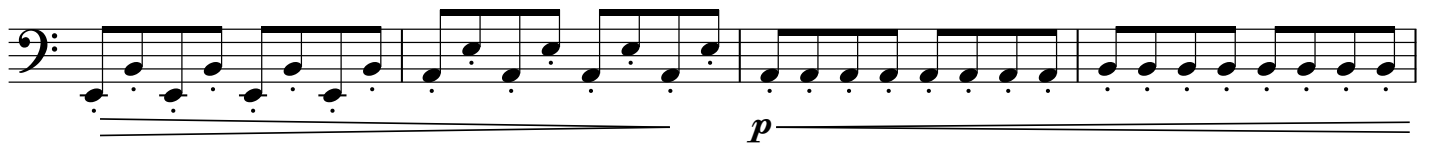
15



60



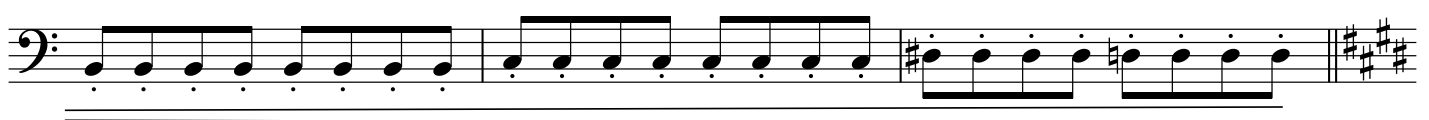
64



68



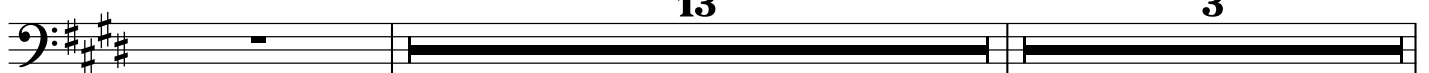
71



74

13

3



91

f

95

4

102

12

p *f*

120

p *f*

4

129

8 **3** **15** **8** **7**

Andante

174

p

181

p

191

Meno mosso

pp