

# Toată ziua-n ascensor

## All day in the elevator

Contrabass

Vasile Vasilache - arr. Ioan Dobrinescu

Quiq step ♩ = 132

*f*

5 *pizz.*  
*mp*

9  
*mp*

13 **A**  
*mf*

18  
*mp*

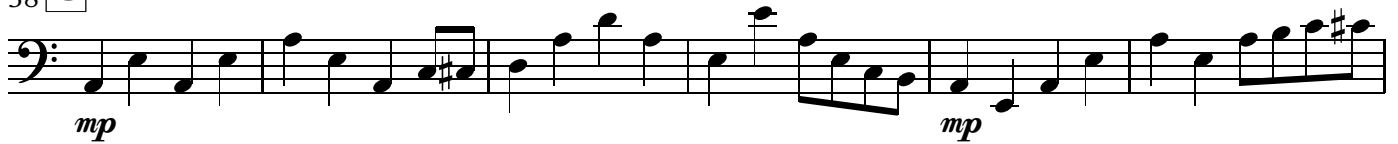
23 **B**  
*mf*

29  
*mf*

34

Copyright © Ioan Dobrinescu

## Contrabass

38 **C**

44

**D**

48



53

**E**

59



64

68 **F**

72



Contrabass

76

Musical notation for Contrabass, measure 76. The staff shows a sequence of notes: a quarter note, a quarter rest, a beamed eighth-note pair with an accent (>), a quarter rest, a quarter note, a quarter rest, a beamed eighth-note pair with an accent (>), and a quarter rest. The dynamic marking *sf* is placed below the second beamed eighth-note pair. The staff ends with a double bar line.