

Bass

Missa Brevis

1 Kyrie

Dick van der Stoep

$\text{♩} = 64$ **A**

f Ky rie e_ lei_ son e_ lei_ son e_ lei_ son

12 **B**

p Chris_ te Chrie_ te Chris_ te e - lei_ son *f* Chris_ te e -

24

lei_ son Chris_ te e - lei_ son Chris_ te e - lei_ son Chris_ te e -

32

lei_ son *p* Ky_ rie e_ lei_ son e_ lei_ son

C

41

Ky-rie - e - lei - son e - lei_ son *f* Chris_ te e - lei_ son

49

Chris_ te e - lei_ son Chris_ te e - lei_ son Chris_ ye e - lei_ son

D

61

Chris_ te e - lei_ son *p* Ky_ rie_ e_ lei_ son e - lei_ son e -

70

lei_ son Chris_ te e - lei_ son Chris_ te e - lei_ son

79

Chris_ te e - lei_ son Chris_ te e - lei_ son Chris_ te *f*

2

90

E

Ky - rie e lei_ son e - lei_ son e_ lei_ son *p* Chris-te

101

F

Chris-te Chris - te e_ lei_ son *mf* Chris-te e - lei_ son Chris-te e -

113

lei_ son Chris - te e - lei_ son Chris - te e - lei_ son

124

p Ky - rie e - lei_ son e - lei_ son Ky - rie_ e_ lei - son

129

G

Ky - rie_ e - lei - son. *f* Chris-te e - lei_ son Chris-te e -

138

lei_ son Chris - te e - lei_ son Chris - te e - lei_ son

149

Chris - te e - lei_ son *Rit.* Chris - te e - lei_ son_

Bass

Missa Brevis

2 Gloria

Dick van der Stoep

♩ = 80 A

f ri - a ri - a *mf* Glo-ri-a

Detailed description: This system contains measures 1 through 11. It begins with a treble clef, a key signature of three sharps (F#, C#, G#), and a 3/4 time signature. The tempo is marked as quarter note equals 80. A box labeled 'A' is placed above the staff. There are two first endings, each marked with a '2'. The lyrics are 'ri - a', 'ri - a', and 'Glo-ri-a'.

12 B

in ex-cel-sis De-o Glo-ri-a in ex-cel-sis De-o *f* ri-

Detailed description: This system contains measures 12 through 21. It starts with measure 12. A box labeled 'B' is placed above the staff. There is a triplet of eighth notes in measure 21. The lyrics are 'in ex-cel-sis De-o', 'Glo-ri-a', 'in ex-cel-sis De-o', and 'ri-'.

22

a ri - a *mf* Glo-ri-a in ex-cel-sis De-o

Detailed description: This system contains measures 22 through 32. It starts with measure 22. There is a first ending marked with a '2' in measure 24. The lyrics are 'a', 'ri - a', 'mf Glo-ri-a', and 'in ex-cel-sis De-o'.

33 C

Glo-ri-a in ex-cel-sis De-o *mf* Glo - ri - a Glo - ri - a

Detailed description: This system contains measures 33 through 42. It starts with measure 33. A box labeled 'C' is placed above the staff. There is a first ending marked with a '2' in measure 35. The lyrics are 'Glo-ri-a', 'in ex-cel-sis De-o', 'mf Glo - ri - a', and 'Glo - ri - a'.

43

ex - cel - sis Glo - ri - a *p* in ex - cel - sis in ex - cel - sis in ex -

Detailed description: This system contains measures 43 through 51. It starts with measure 43. The lyrics are 'ex - cel - sis', 'Glo - ri - a p', 'in ex - cel - sis', 'in ex - cel - sis', and 'in ex -'.

52 D

cel-sis in ex - cel-sis in ex - cel-sis in ex - cel-sis *f* ri - a

Detailed description: This system contains measures 52 through 60. It starts with measure 52. A box labeled 'D' is placed above the staff. The lyrics are 'cel-sis', 'in ex - cel-sis', 'in ex - cel-sis', 'in ex - cel-sis', and 'f ri - a'.

61

ri - a Glo-ri-a in ex-cel-sis De-o Glo-ri-a

Detailed description: This system contains measures 61 through 71. It starts with measure 61. There are two first endings, each marked with a '2'. The lyrics are 'ri - a', 'Glo-ri-a', 'in ex-cel-sis De-o', and 'Glo-ri-a'.

72

in ex - cel - sis De_ o *ff* Glo - ri - a

Detailed description: This system contains measures 72 through 81. It starts with measure 72. There is a first ending marked with a '5'. The lyrics are 'in ex - cel - sis De_ o' and 'ff Glo - ri - a'.

Bass

Missa Brevis

4 Credo

Dick van der Stoep

A

♩ = 70

5



Cre - do in u - num De - um Pa - trem om - ni - po -

10



ten - tem Fac - to - rem cae - li et ter - ra vi - si - bi - li - um

14



om - ni - um et in - vi - si - bi - li - um Et in u - num Do - mi - num Je - sum

19



Chris - tum fi - li - um Dei u - ni - ge - ni - tum Et ex pa - tre na - tum an - te

24



om - ni - a se - cu - la De - um de De - o Lu - men de Lu - mi -

33



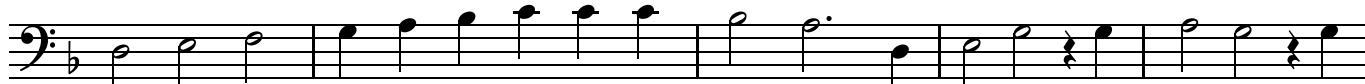
ne De - um ve - rum de De - o ve - ro ge - ni - tum non fac - tum

40



con - sub - stan - ti - a - lem Pa - tri per quem om - ni - a - fac - ta sunt Qui

44



prop - ter nos ho - mi - nes et prop - ter nos - tram sa - lu - tem de - scen - dit de -

B ♩ = 80*poco rubato come un recitativo*cae - lis *pp* mm

61



C

$\text{♩} = 70$ 42

glissando

A _____ men _____

Bass

Missa Brevis

5 Agnus Dei

Dick van der Stoep

A 16 *p* Ah

26 **B** Ah

37 **C** Ah

51 Ah

65 **D** **E** Ah

76 Ah 20

Bass

Missa Brevis

6 Sanctus

Dick van der Stoep

A

$\text{♩} = 66$

f

San - ctus San - ctus San - ctus_ Dó mi-nus De - us Sa - ba -

4

oth_ San_ ctus San - ctus San - ctus_

7

Dó mi-nus De - us Sa - ba - oth_ *mf* Ple-ni sunt cae-li et

10

ter - ra glo-ri-a tu - a Ple-ni sunt cae-li et ter - ra glo-ri-a tu - a

13

Ple-ni sunt cae-li et ter - ra glo-ri-a tu - a

16

f glo-ri-a glo-ri-a tu - a San - ctus San - ctus San - ctus_

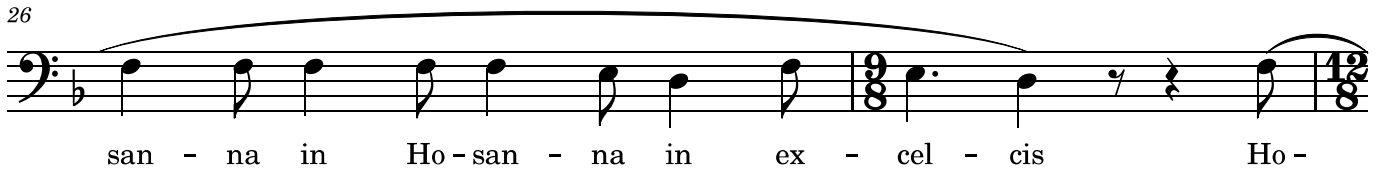
19

Dó-mi-nus De - us Sa - ba - oth_ **B** San - ctus San - ctus

22

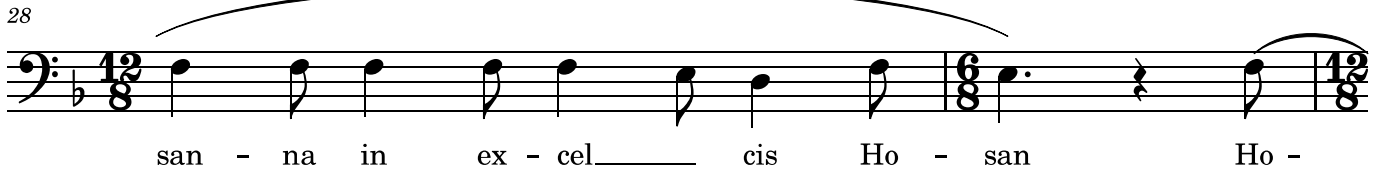
San - ctus_ $\text{♩} = 120$ Dó-mi-nus De - us Sa - ba - oth_ *mf* Ho -

26



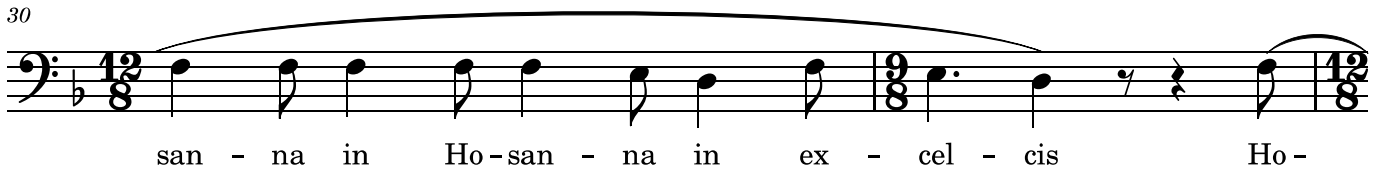
san - na in Ho - san - na in ex - cel - cis Ho -

28



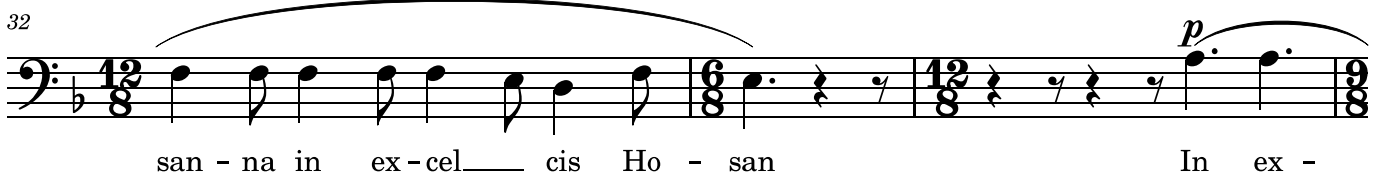
san - na in ex - cel - cis Ho - san Ho -

30



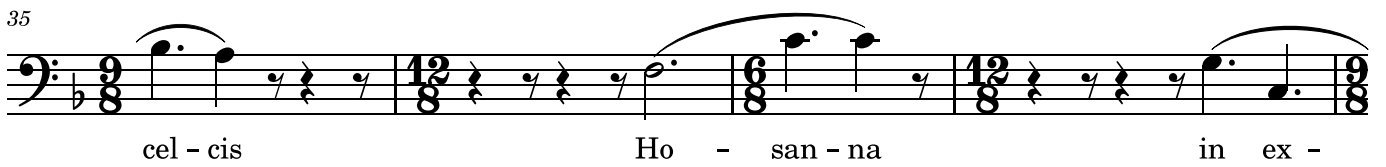
san - na in Ho - san - na in ex - cel - cis Ho -

32



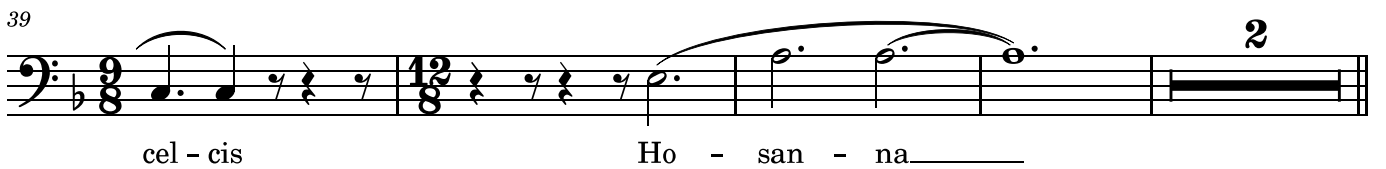
san - na in ex - cel - cis Ho - san In ex -

35



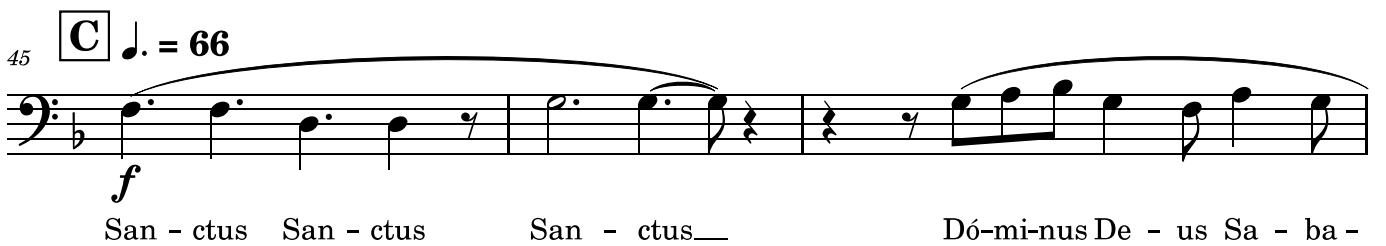
cel - cis Ho - san - na in ex -

39



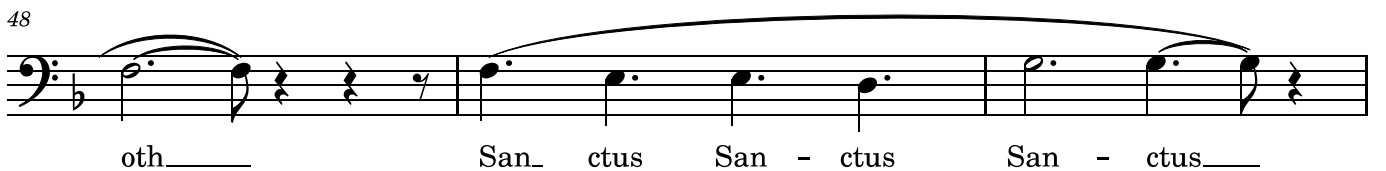
cel - cis Ho - san - na

45 **C** ♩. = 66



f San - ctus San - ctus San - ctus Dó-mi-nus De - us Sa - ba -

48



oth San - ctus San - ctus San - ctus

51



Dó-mi-nus-De - us Sa - ba - oth *mf* Ple-ni sunt cae-li et

54

ter - ra glo - ri - a tu - a Ple - ni sunt cae - li et ter - ra glo - ri - a tu - a

57

Ple - ni sunt cae - li et ter - ra glo - ri - a tu - a

60

glo - ri - a glo - ri - a tu - a *f* San - ctus San - ctus San - ctus

63

Dó - mi - nus De - us Sa - ba - oth San - ctus San - ctus

66

San - ctus Dó - mi - nus De - us Sa - ba - oth

69

Dó - mi - nus De - us Sa - ba - oth Dó - mi - nus De - us Sa - ba -

72

oth