

Humoresque

Minh Tu Tran

Allegretto (♩ = 120)

3. Klarinette in G



Variation 1
Moderato (♩ = 110)



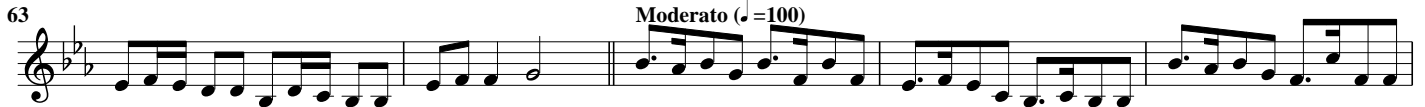
Variation 2
Moderato (♩ = 100)



Variation 3
Moderato (♩ = 90)



Variation 4
Moderato (♩ = 100)



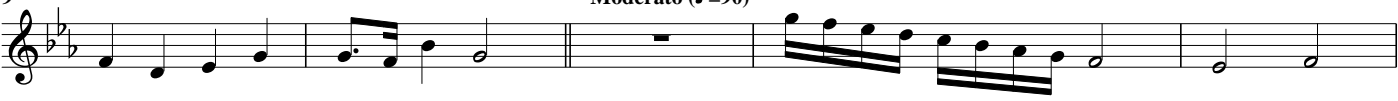
73
3. Cl. (G)



Musical staff for measures 73-78, starting with a treble clef and a key signature of three flats (B-flat, E-flat, A-flat). The melody consists of eighth and quarter notes.

Variation 5
Moderato (♩=90)

79



Musical staff for measures 79-83, continuing the melody from Variation 5.

84



Musical staff for measures 84-87, featuring a more active eighth-note melody.

88



Musical staff for measures 88-92, with a mix of eighth and quarter notes.

93



Musical staff for measures 93-96, featuring a complex eighth-note pattern.

Variation 6
Andante (♩=60)

97



Musical staff for measures 97-100, marked with a 12/8 time signature and a slower tempo.

101



Musical staff for measures 101-104, continuing the Andante variation.

105



Musical staff for measures 105-108, with a steady eighth-note flow.


109



Musical staff for measures 109-112, featuring a melodic line with some rests.

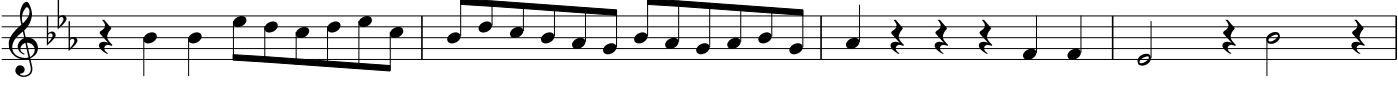
Variation 7
Moderato (♩=60)

113



Musical staff for measures 113-116, marked with a 6/4 time signature and a moderate tempo.

117



Musical staff for measures 117-120, continuing the Variation 7 melody.

121



Musical staff for measures 121-124, with a mix of eighth and quarter notes.

125



Musical staff for measures 125-128, ending with a *rallentando* marking and a double bar line.