

# Harp

## Trio Sonata (in G Major)

Carl Philipp Stamitz (1745-1801)

Arranged for Violin, Viola & Harp by Mike Magatagan 2015

### I. Allegro moderato (♩ = 55)

Measures 1-7 of the Trio Sonata in G Major, I. Allegro moderato. The music is in G major (one sharp) and 2/4 time. The tempo is marked 'I. Allegro moderato (♩ = 55)'. The dynamic is marked 'mf' (mezzo-forte). The notation shows a treble and bass staff with various chords and melodic lines.

Measures 8-16 of the Trio Sonata in G Major, I. Allegro moderato. The notation continues with a treble and bass staff, showing various chords and melodic lines.

Measures 17-24 of the Trio Sonata in G Major, I. Allegro moderato. The notation continues with a treble and bass staff, showing various chords and melodic lines.

Measures 25-32 of the Trio Sonata in G Major, I. Allegro moderato. The notation continues with a treble and bass staff, showing various chords and melodic lines.

Measures 33-40 of the Trio Sonata in G Major, I. Allegro moderato. The notation continues with a treble and bass staff, showing various chords and melodic lines.

40

47

57

65

73

82

88

96

105

113

## II. Andante (♩ = 40)

Measures 1-10 of the second movement. The music is in G major (one sharp) and 3/8 time. The tempo is Andante with a quarter note equal to 40 beats per minute. The piece begins with a mezzo-forte (mf) dynamic. The right hand features a melodic line with eighth and sixteenth notes, while the left hand provides a harmonic accompaniment with dotted half notes and eighth notes. A triplet of eighth notes appears in measure 7.

Measures 11-20 of the second movement. The melodic line in the right hand continues with various intervals and rests, often beamed in groups. The left hand maintains a steady accompaniment pattern. Measure 18 includes a trill in the right hand.

Measures 21-30 of the second movement. This section features more complex rhythmic patterns, including sixteenth-note runs in the right hand. The left hand continues with its accompaniment, featuring some longer note values like dotted half notes.

Measures 31-41 of the second movement. The right hand has several measures with sustained chords or dyads, some marked with a fermata. The left hand continues with its accompaniment, including a measure with a whole rest in measure 37.

Measures 42-50 of the second movement. The final section of the page shows the continuation of the melodic and harmonic themes. The right hand has more active sixteenth-note passages, while the left hand concludes with a few final accompaniment notes, including a half note in the final measure.

51

58

66

74

85

97

105

113

122

131

141

150

159

### III. Rondo allegretto (♩ = 105)

10

17

System 17-25: Treble clef, key of G major. Measures 17-25. The right hand features a melodic line with eighth and sixteenth notes, often beamed together. The left hand provides a harmonic accompaniment with half notes and quarter notes, including some ledger lines below the staff.

26

System 26-34: Treble clef, key of G major. Measures 26-34. The right hand continues the melodic development with more complex rhythmic patterns. The left hand features a steady eighth-note accompaniment in the lower register.

35

System 35-42: Treble clef, key of G major. Measures 35-42. Measures 35-37 show a dense texture with many beamed sixteenth notes in the right hand. Measures 38-42 show a more active left hand with eighth-note patterns.

43

System 43-49: Treble clef, key of G major. Measures 43-49. Measures 43-45 feature a series of chords in the right hand. Measures 46-49 show a more flowing melodic line in the right hand with eighth-note accompaniment in the left.

50

System 50-57: Treble clef, key of G major. Measures 50-57. Measures 50-52 feature a series of chords in the right hand. Measures 53-57 show a more flowing melodic line in the right hand with eighth-note accompaniment in the left.



58

68

77

87

95

104

System 104-111: Treble clef, key of G major. The right hand plays a continuous eighth-note melody with various slurs and ties. The left hand plays a bass line with eighth notes and rests, including a whole note chord at the end of the system.

112

System 112-118: Treble clef, key of G major. The right hand continues the eighth-note melody. The left hand features a whole note chord at the beginning, followed by eighth notes and a half note at the end of the system.

119

System 119-127: Treble clef, key of G major. The right hand plays eighth-note chords with a wavy line indicating a tremolo effect. The left hand plays a steady eighth-note bass line.

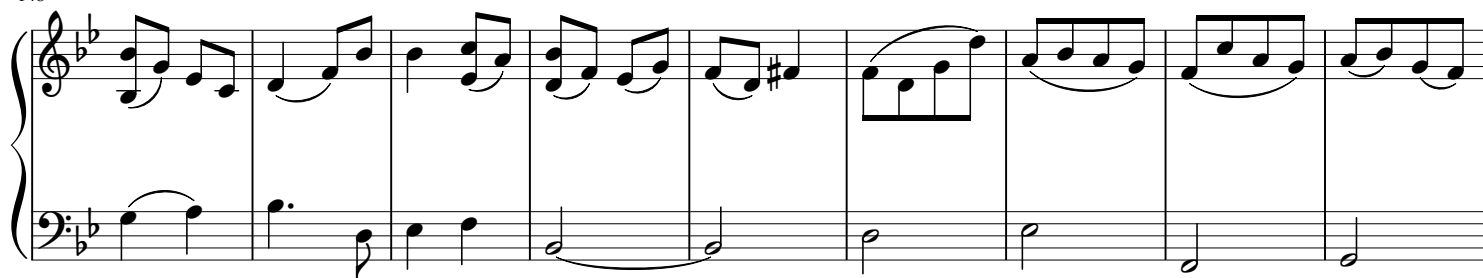
128

System 128-136: Treble clef, key of B minor (two flats). The right hand plays eighth-note chords with a wavy line indicating a tremolo effect. The left hand plays a steady eighth-note bass line.

137

System 137-144: Treble clef, key of B minor (two flats). The right hand plays eighth-note chords with a wavy line indicating a tremolo effect. The left hand plays a steady eighth-note bass line.

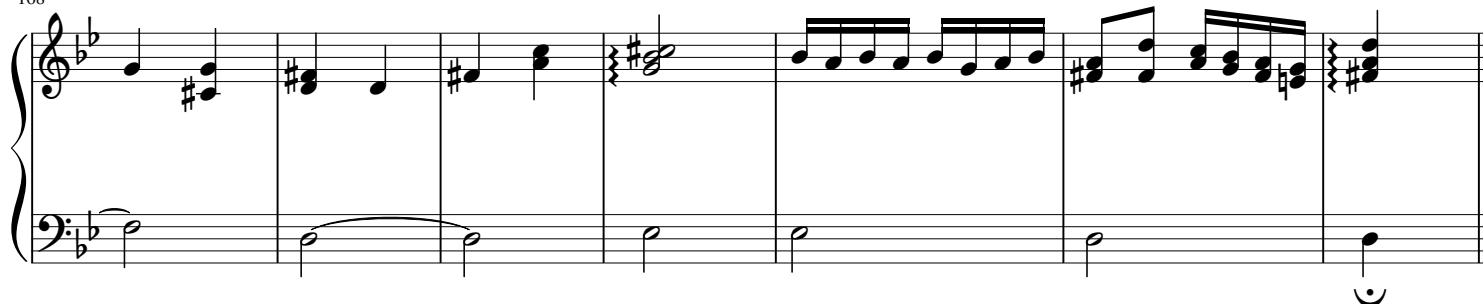
148



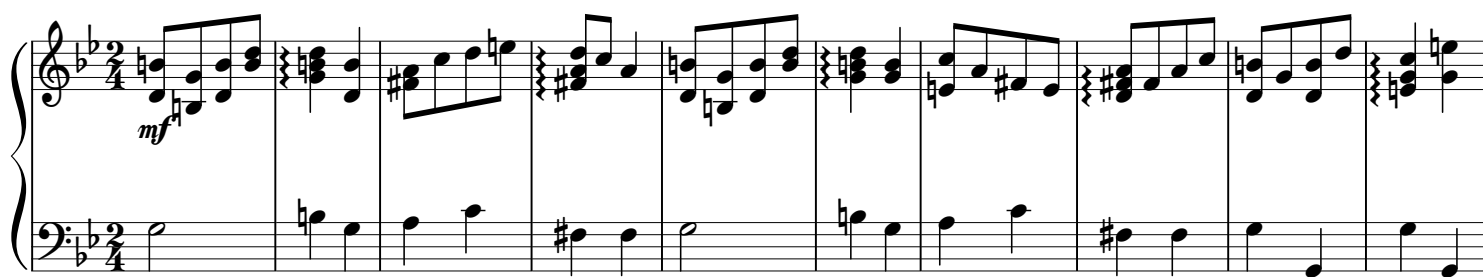
157



168



#### IV Maggiore (♩ = 60)



11



22

28

37

45

*rit.*

51

*molto*