

HYMN AND GIGUE (À LA FUGUE)

ON A CHILDREN'S SONG

JOHN SRUTOWSKI

MODERATO

1 *mf*

6 *mf* *mf* *f*

11 **A**

16

21 **B**

27

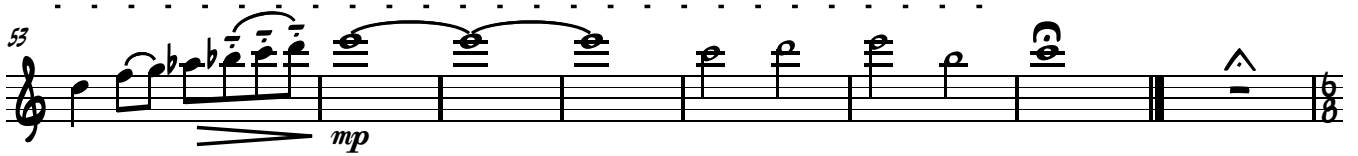
31 *mp* *CRESC.* *RIT.*

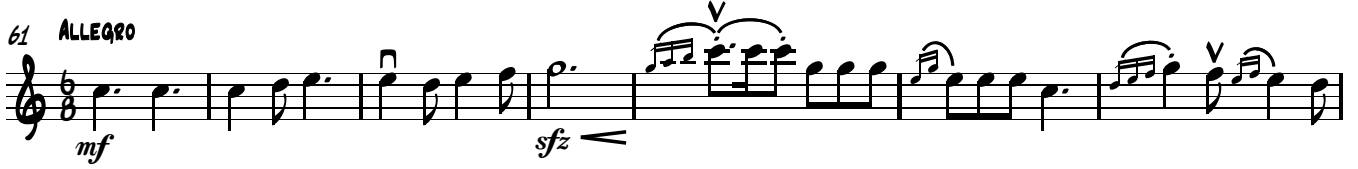
37 **C** *f* *RIT.*

43 *A TEMPO*

47 **D** *mf* *RALL.*

VIOLIN 1
HYMN AND GIGUE (A LA FUGUE) ON A CHILDREN'S SONG

53 

61 ALLEGRO 

68 

75 

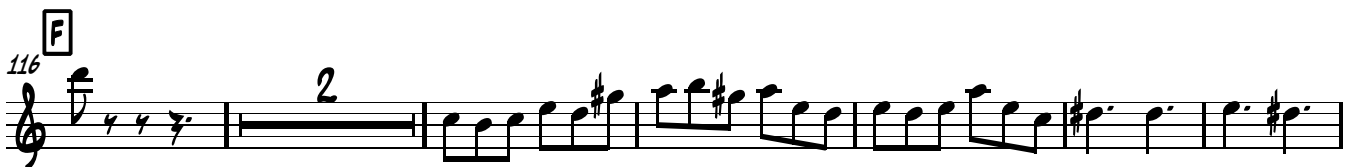
82 

89 

95 

103 

110 

116 

124 

VIOLIN 1
HYMN AND GIGUE (A LA FUGUE) ON A CHILDREN'S SONG

131 **G**

144 **H**

153 *f*

160 *mf*

166 7

178 *f* *sfz*

185 **J**

192

198 **K**

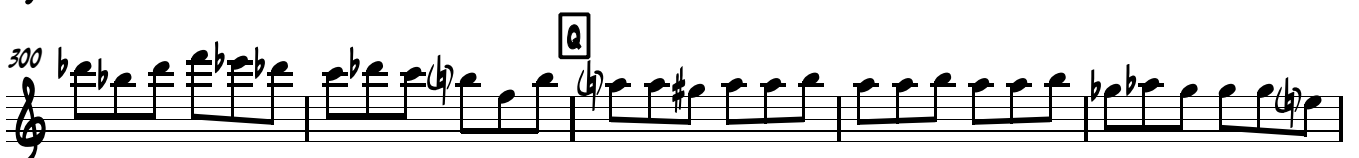
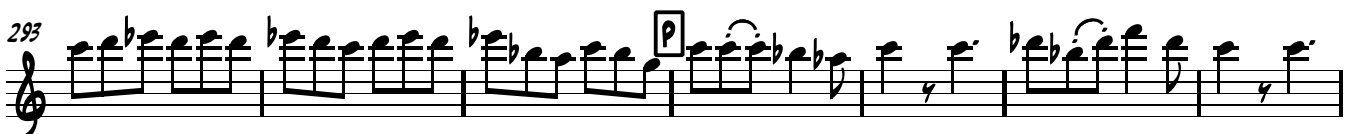
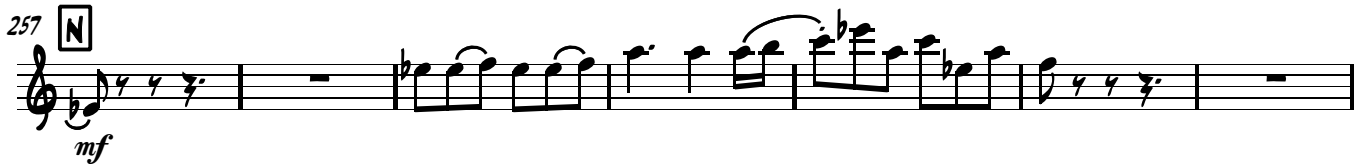
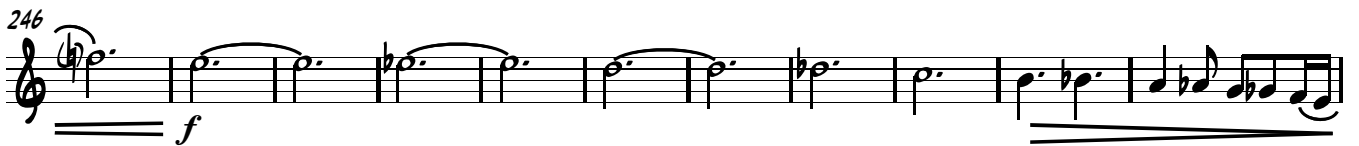
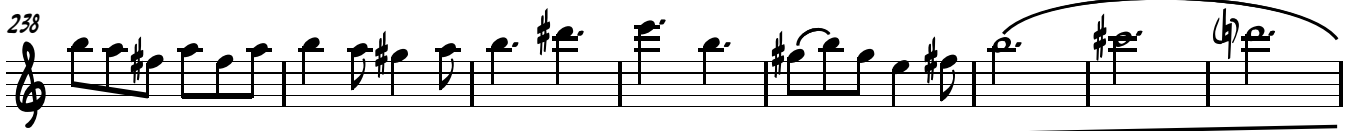
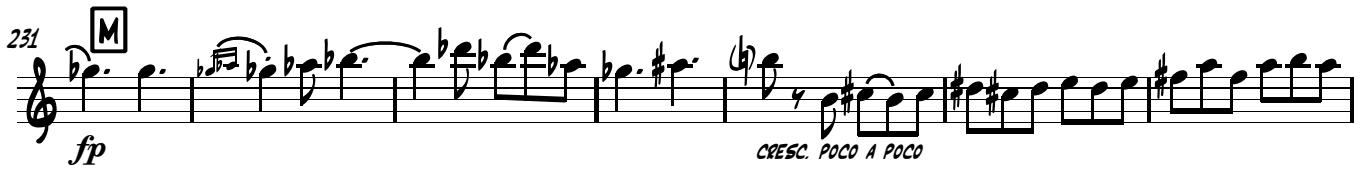
204

210

217 **L** *f*

Detailed description: This page of a musical score for Violin 1 contains ten staves of music, numbered 131 to 217. The music is written in treble clef with a key signature of one sharp (F#). It features various musical notations including slurs, accents, and dynamic markings. Specific measures are marked with boxed letters: G (measure 131), H (measure 144), J (measure 185), K (measure 198), and L (measure 217). Dynamic markings include *f* (forte), *mf* (mezzo-forte), and *sfz* (sforzando). A fermata with the number 7 is placed over measure 166. The score concludes with a final *f* dynamic marking at measure 217.

VIOLIN 1
HYMN AND GIGUE (A LA FUGUE) ON A CHILDREN'S SONG



VIOLIN 1
HYMN AND GIGUE (A LA FUGUE) ON A CHILDREN'S SONG

305 R

311

318

325 S
ff

330

335 T

341

347 U

353 V

359

364 W

VIOLIN 1
HYMN AND GIGUE (A LA FUGUE) ON A CHILDREN'S SONG

369

375

381

386

391

397

403

409

415

421

421

421