

# CHERE MARIA

Cello

Κ. Παπακωστόπουλος

Στην ιερή μνήμη Δημητρίου Δαπέργολα

Ενορχήστρωση Νίνος Σ Γεράσιμος

Moderato (♩ = c. 108)

Measures 1-7: Moderato (♩ = c. 108). Dynamics: *p* (piano) at the start, *molto cresc...* (molto crescendo) in the middle, and *f* (forte) at the end.

Measures 8-15: Dynamics: *p* (piano) at the start, *rit* (ritardando) in the middle, and *p* (piano) at the end.

Measures 16-34: Dynamics: *p* (piano) at the start, *f* (forte) at the end. A fermata is present over measure 34.

Andante (♩ = c. 76)

Moderato (♩ = c. 108)

Measures 35-45: Andante (♩ = c. 76) section. Dynamics: *mf* (mezzo-forte) at the start, *f* (forte) in the middle. A fermata is present over measure 45. A 4-measure rest is indicated above the staff.

Measures 46-53: Dynamics: *p* (piano) at the start, *molto cresc... f* (molto crescendo to forte) in the middle.

Measures 54-67: Dynamics: *f* (forte) at the start. A 7-measure rest is indicated above the staff.

Measures 68-74: Dynamics: *mf* (mezzo-forte) at the start, *f* (forte) at the end.

Measures 75-81: Dynamics: *mp* (mezzo-piano) at the start, *cresc* (crescendo) at the end.

Measures 82-89: Dynamics: *mp* (mezzo-piano) at the start, *cresc* (crescendo) at the end.

2

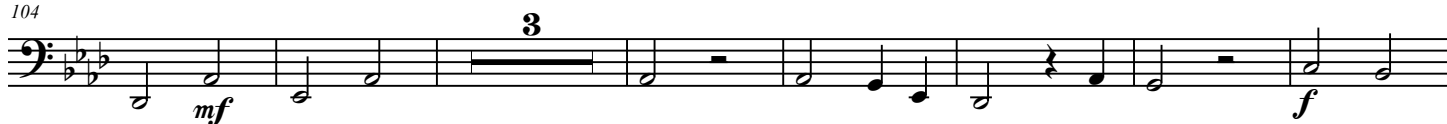
89



96



104

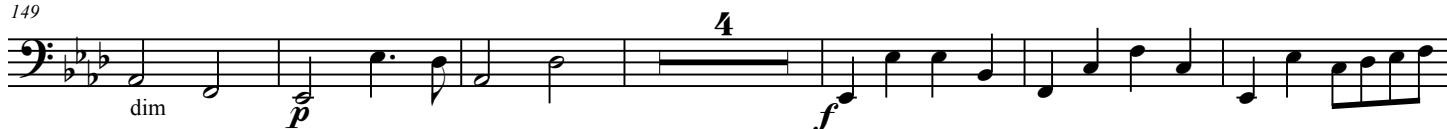


Andante sostenuto (♩ = c. 66) Andante (♩ = c. 84)

114



149



159



166

Moderato (♩ = c. 100)



173



Andante sostenuto (♩ = c. 63)

193



201

