

B \flat Clarinet

'Postcard'

Con brio $\text{♩} = 280$

Kees Schoonenbeek

3

f

8

13

17

21

25

29

33

3

40 *f*

43

46

49

53

56

61

65 *tr* *tr* *tr*

69 *tr* *tr* *tr* *tr* *tr*

73 *tr* *tr* *tr* *tr* *tr*

77 *mf*

81 *f*

Detailed description: This page of a musical score for the piece 'Postcard' contains measures 40 through 81. The music is written in a single treble clef staff. The key signature has one flat (B-flat). The piece begins at measure 40 with a forte (*f*) dynamic. The melody is characterized by frequent sixteenth-note runs and slurs. Trills (*tr*) are used as ornaments in measures 65, 69, and 73. The dynamics shift to mezzo-forte (*mf*) at measure 77 and return to forte (*f*) at measure 81. The score concludes with a final chord in measure 81.

85



89



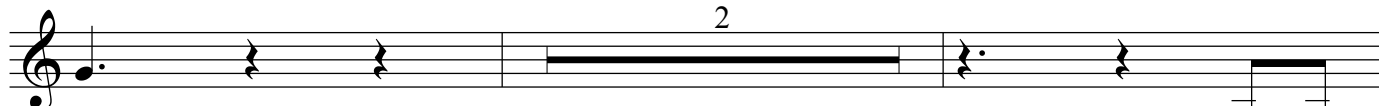
93



97



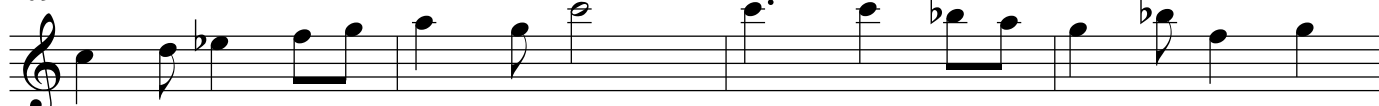
101



105



109



113



116

