

# 'Due Canzoni'

## I

Kees Schoonenbeek

8 *mf*

15

22

29 *mf*

42

52

59 *mf*

66

*f*

Andante cantabile ♩ = 60

## II

Musical score for the first section of 'Due Canzoni', measures 7-37. The music is in G major and 4/4 time. It begins with a fermata over a whole note G4, followed by a half note G4 and a quarter note G4. The melody continues with eighth and sixteenth notes, often beamed together. Dynamics include *mf* (measures 7-11), *f* (measures 12-15), *mf* (measures 16-19), and *p* (measures 20-23). The tempo is marked 'Andante cantabile' with a quarter note equal to 60 beats per minute. Measure numbers 7, 12, 16, 20, 26, and 32 are indicated on the left. A fermata is present at the end of measure 37.

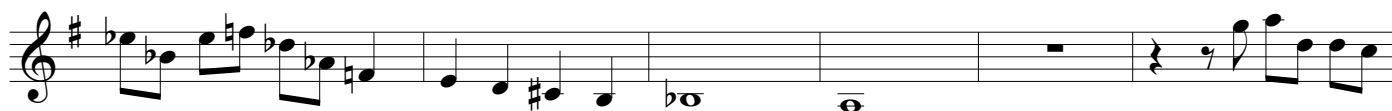
38 Doppio movimento ♩ = 120

Musical score for the second section of 'Due Canzoni', measures 38-52. The tempo changes to 'Doppio movimento' (double movement) with a quarter note equal to 120 beats per minute. The music remains in G major and 4/4 time. It starts with a fermata over a whole note G4, followed by a half note G4 and a quarter note G4. The melody is more rhythmic, featuring eighth and sixteenth notes. Dynamics include *f* (measures 38-43) and *f* (measures 44-52). Measure numbers 44 and 52 are indicated on the left. A fermata is present at the end of measure 52.

58



63



69

