

Violon - 18'04"

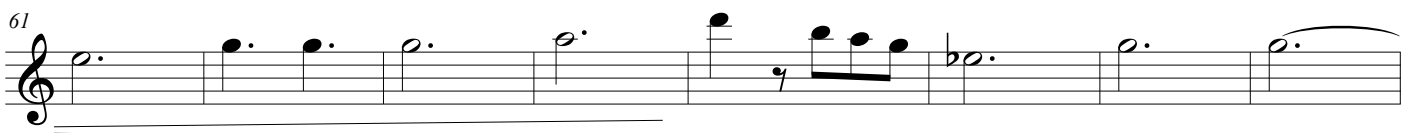
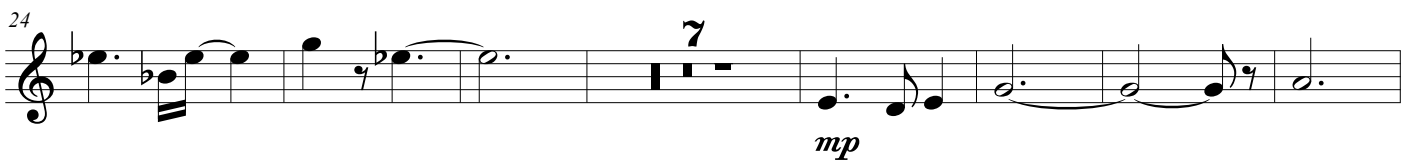
# Trio à cordes

Op 68

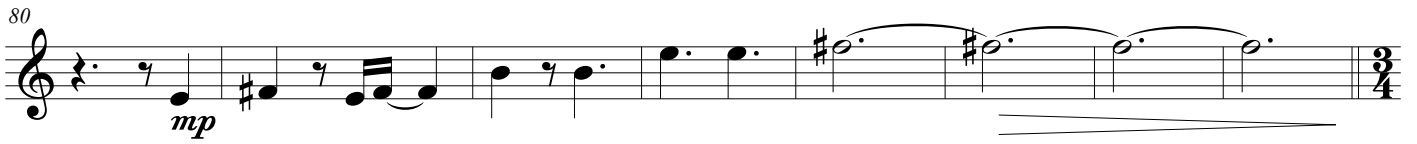
M.-C. Raboud-Theurillat

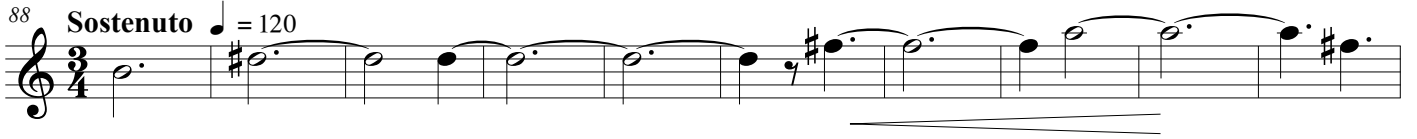
Leggiero ♩ = 50

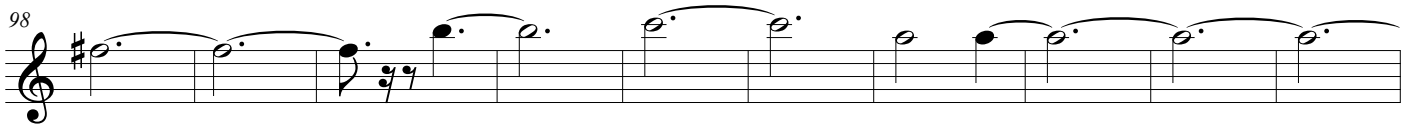
I

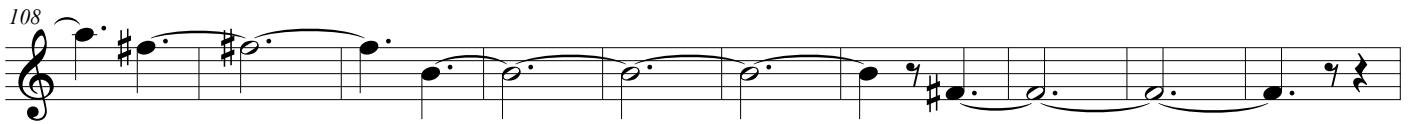


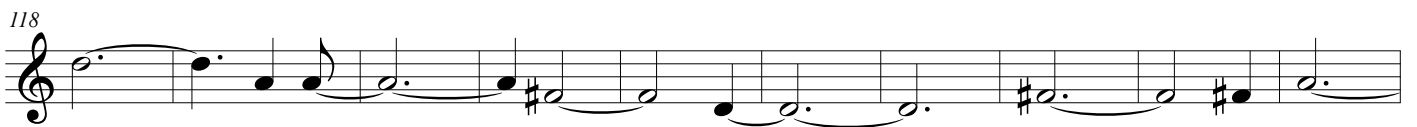
69 

80 

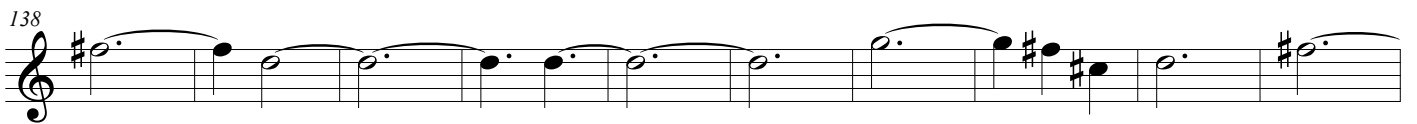
88 **Sostenuto** 

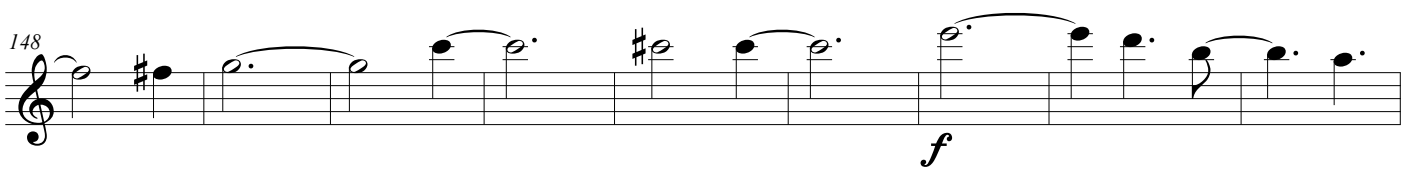
98 

108 

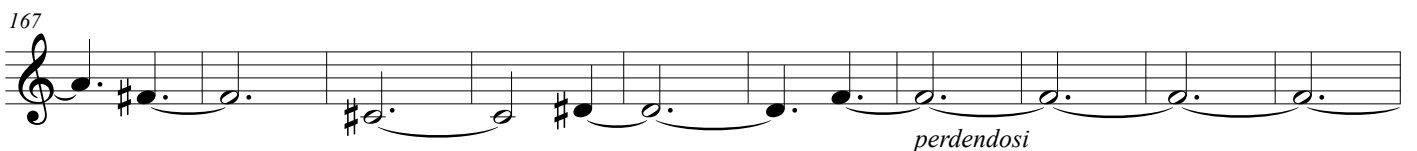
118 

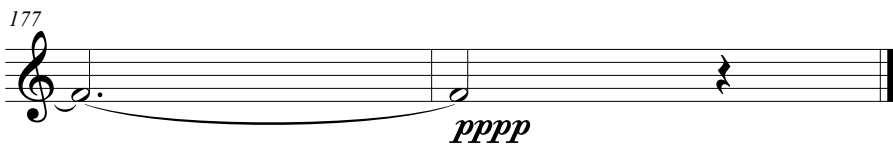
128 

138 

148 

157 

167 

177 

## II

Espressivo ♩ = 40

Musical score for section II, measures 1-25. The score is written in treble clef with a key signature of one sharp (F#) and a time signature of 3/4. It begins with a dynamic marking of *mp* and a tempo of ♩ = 40. The first measure contains a whole note chord with a '2' above it. The second measure is a whole rest. The third measure starts with a half note F#4, followed by quarter notes G4, A4, and B4. The fourth measure contains a triplet of eighth notes: C#5, D5, and E5. The fifth measure has a quarter note F#5, and the sixth measure has a quarter note G5. The seventh measure has a half note A5, and the eighth measure has a half note B5. The ninth measure has a whole note C6, and the tenth measure has a whole note D6. The eleventh measure has a half note E6, and the twelfth measure has a half note F#6. The thirteenth measure has a whole note G6, and the fourteenth measure has a whole note A6. The fifteenth measure has a half note B6, and the sixteenth measure has a half note C7. The seventeenth measure has a whole note D7, and the eighteenth measure has a whole note E7. The nineteenth measure has a half note F#7, and the twentieth measure has a half note G7. The twenty-first measure has a whole note A7, and the twenty-second measure has a whole note B7. The twenty-third measure has a whole note C8, and the twenty-fourth measure has a whole note D8. The twenty-fifth measure has a whole note E8. The score includes various musical notations such as slurs, ties, and dynamic markings like *p* and *calmato*.

## III - Tango

Allegro deciso ♩ = 165

Musical score for section III - Tango, measures 1-27. The score is written in treble clef with a key signature of one sharp (F#) and a time signature of 4/4. It begins with a dynamic marking of *mp* and a tempo of ♩ = 165. The first measure contains a whole note chord with a '7' above it. The second measure has a quarter note G4, and the third measure has a quarter note A4. The fourth measure has a quarter note B4, and the fifth measure has a quarter note C5. The sixth measure has a quarter note D5, and the seventh measure has a quarter note E5. The eighth measure has a quarter note F#5, and the ninth measure has a quarter note G5. The tenth measure has a quarter note A5, and the eleventh measure has a quarter note B5. The twelfth measure has a quarter note C6, and the thirteenth measure has a quarter note D6. The fourteenth measure has a quarter note E6, and the fifteenth measure has a quarter note F#6. The sixteenth measure has a quarter note G6, and the seventeenth measure has a quarter note A6. The eighteenth measure has a quarter note B6, and the nineteenth measure has a quarter note C7. The twentieth measure has a quarter note D7, and the twenty-first measure has a quarter note E7. The twenty-second measure has a quarter note F#7, and the twenty-third measure has a quarter note G7. The twenty-fourth measure has a quarter note A7, and the twenty-fifth measure has a quarter note B7. The twenty-sixth measure has a quarter note C8, and the twenty-seventh measure has a quarter note D8. The score includes various musical notations such as slurs, ties, and dynamic markings like *mf*.

36

*mp*

42

*f*

48

4 5

61

*mf*

67

3 1

75

2

82

2