

Es ist ein Ros entsprungen

Lo, how a rose e'er blooming, Dans une étable obscure

German Carol, Musae Sioniae VI no. 53, Wolfenbüttel 1609

Melody first published in 1599

arr. Michael Praetorius, 1609

Original 4-part setting for choir (SATB) of Michael Praetorius

Soprano

Alto

This block shows the first five measures of the Soprano and Alto parts. The Soprano part begins with a whole note G4, followed by quarter notes A4, B4, and C5. The Alto part begins with a whole note E3, followed by quarter notes D3, C3, and B2. Both parts end with a double bar line and repeat dots.

6

A

voice crossing

S

This block shows measures 6 through 13. In measure 13, the Soprano part has a whole note G4, and the Alto part has a whole note E3. A label 'A' is above the Soprano staff and 'S' is below the Alto staff, with 'voice crossing' written between them, indicating the Soprano is singing a lower note than the Alto.

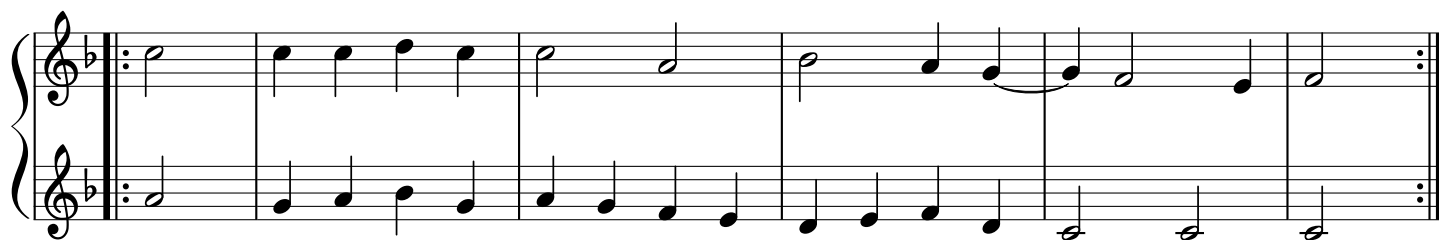
14

This block shows measures 14 through 19. The Soprano part continues with a whole note G4, followed by quarter notes A4, B4, and C5. The Alto part continues with a whole note E3, followed by quarter notes D3, C3, and B2. Both parts end with a double bar line and repeat dots.

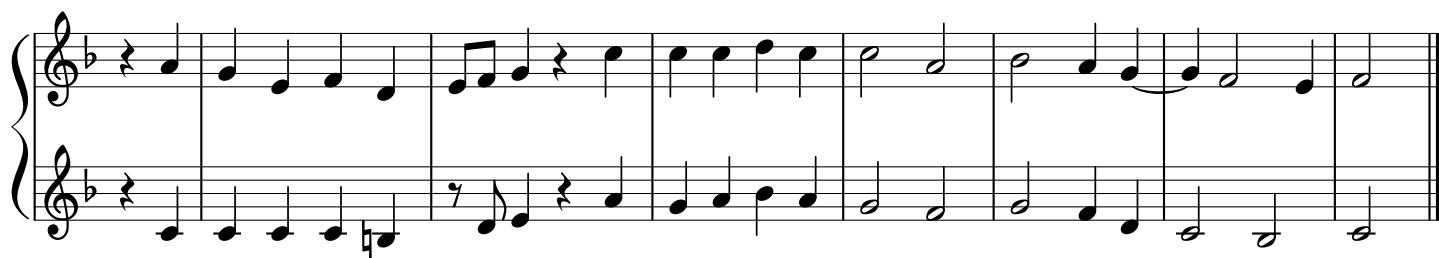
20

This block shows measures 20 through 25. The Soprano part begins with a whole note G4, followed by quarter notes A4, B4, and C5. The Alto part begins with a whole note E3, followed by quarter notes D3, C3, and B2. Both parts end with a double bar line and repeat dots.

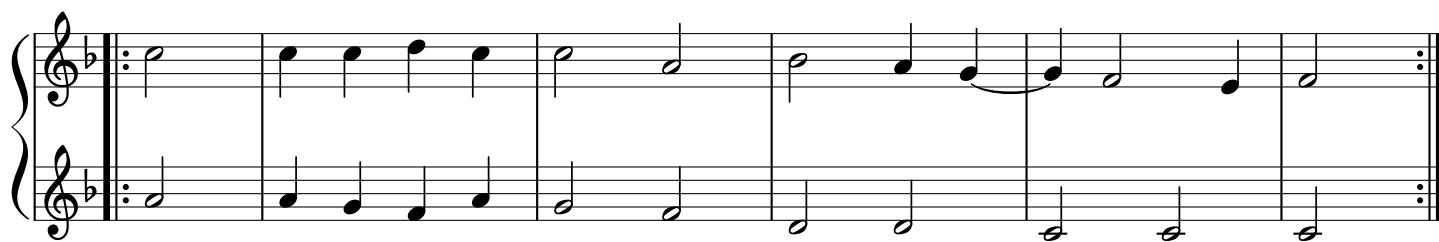
28



34



42



48

