

Camelii Vals

Trombone 2

Ciprian Porumbescu op 5 - arr. Ioan Dobrinescu

Introduction

Andante con moto $\text{♩} = 112$
4

rit. 2 A tempo 2

rit. . . .

11 **A** Tempo di vals $\text{♩} = 136$
14

rit. . . . 2

B Tempo di vals $\text{♩} = 136$
8

35 **C** Poco incalzando *cresc.*

43

rit. 2

Vals I

52 **D** Tempo di vals $\text{♩} = 140$
2

poco rit..

64 **A** tempo

72 **E**

10

88 **F**

6

rit. . . . A tempo

99

Copyright © Ioan Dobrinescu

104 **G** 7 rit. . A tempo *mp*

119 **H** 10 *pp* < > *pp*

137

144 *p* *p* < > rit.

152 **I** Vals II, Entrée, ♩ = 140 poco rit. . . . Tempo di vals ♩ = 132 *mf* *p* rit.

2 12

170 **J** 3 *pp* *p* >

A tempo, ♩ = 132

180 Un poco meno, ♩ = 120 *cresc.* *mp* < > *f*

3

188 **K** Un poco piú mosso ♩ = 144 **L** rit.

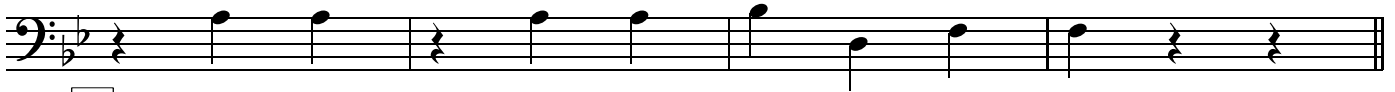
16 14 2

220 **M** Ancora piú mosso ♩ = 152 **N** 7

243



248 *mp* *mf*



252 **O** Vals III, Entrée *poco rit.*



f

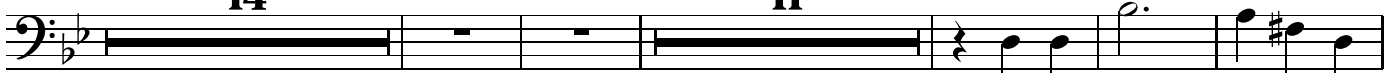
Tempo di vals ♩ = 140 *poco rit.* A tempo

256

14

P

11



286

Q

4

mp



297

p

mp

mp

ff



304

R

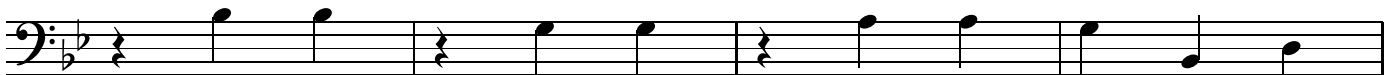
8



mf

rit.

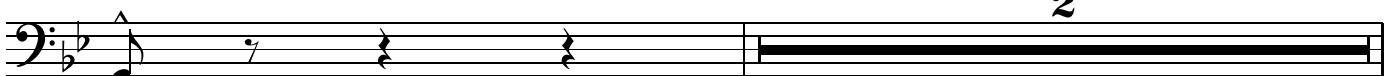
315



319

S Un poco meno mosso, ♩ = 124

2

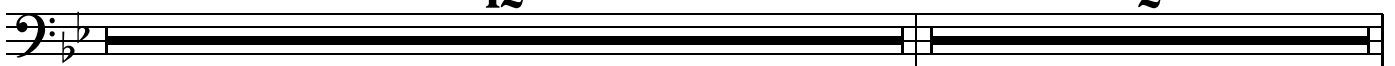


322 *cresc.*

12

rit.

2



Poco a poco accelerando, ♩ = 124

336

T

poco accel.

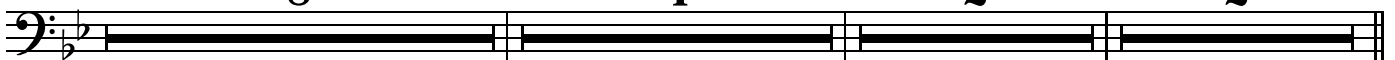
poco rit.

8

4

2

2



352 **U** **13**

mp

372 **Tempo di vals** ♩ = 144 **poco accel.**

pp

385 **rit.** **V Piú mosso** ♩ = 152 **3**

p *pp*

395 **rit.** **A tempo**, ♩ = 152 **2** **W** **poco accel. cresc.**

p

401

mp *mf*

411

f

416 **rit.**

rit.