

2nd Trombone

Balada

Ciprian Porumbescu - arr. Ioan Dobrinescu

Andante flebile (♩ = 52)

pp p

9 **A**

sempre pp

17 **B**

p ♩ = 56 molto rit.

23 **C**

♩ = 56 A tempo p

28

pp ppp

2nd Trombone

34 **D** - (♩ = 60) *poco a poco cresc.*

40

47

60 *molto rit.*

67 **F** *Poco piú moto* ♩ = 120

71



A tempo (♩ = 52)

75

G



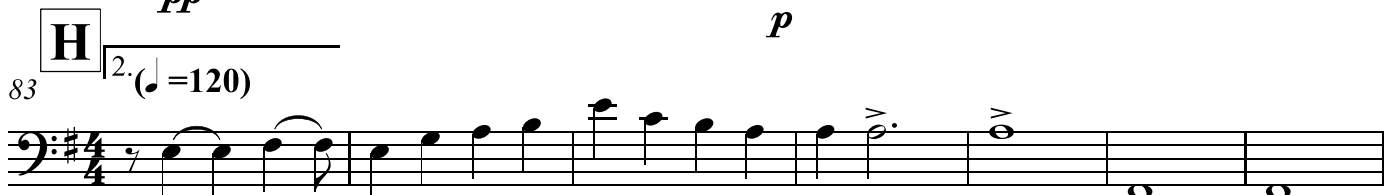
pp

p

83

H

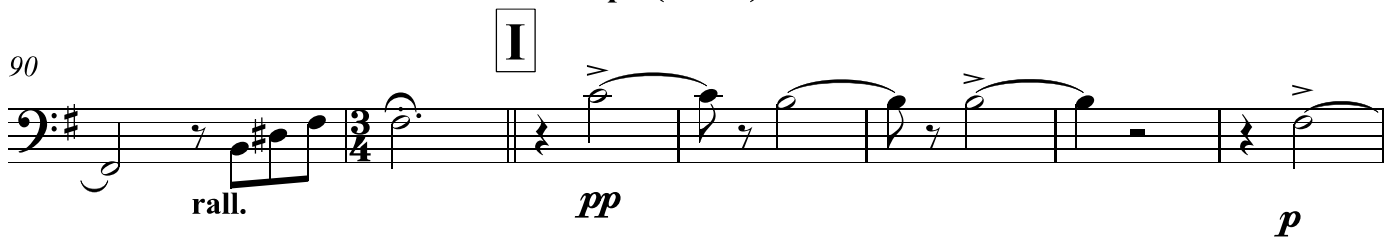
2. (♩ = 120)



A tempo (♩ = 52)

90

I



rall.

pp

p

97

J

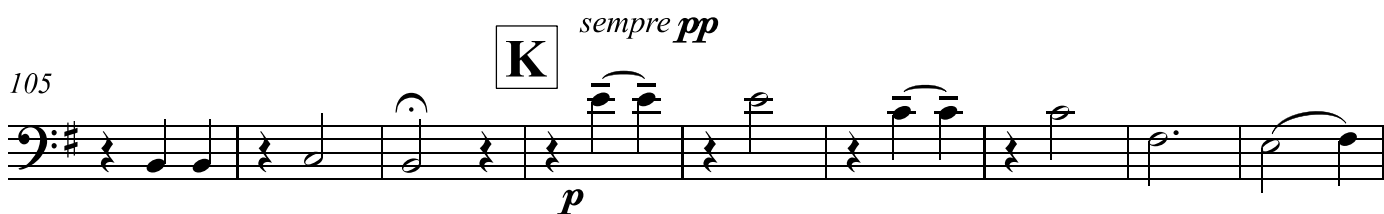
Tempo primo (♩ = 52)



105

K

sempre pp

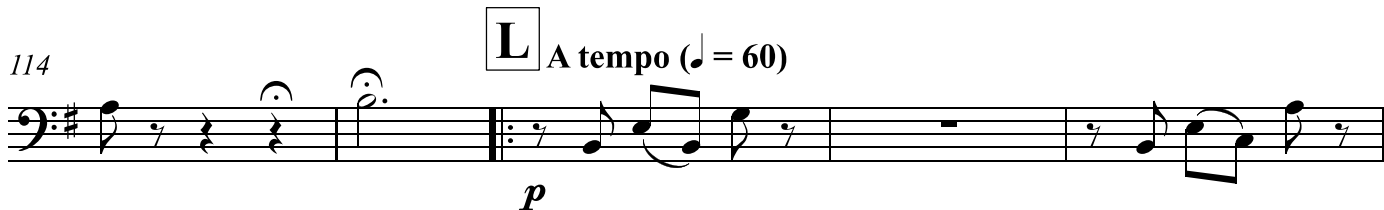


p

114

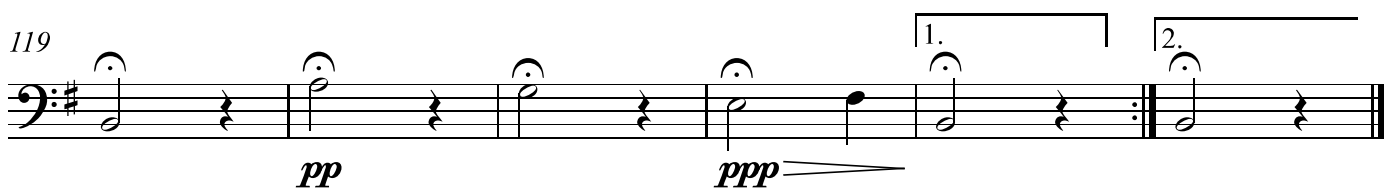
L

A tempo (♩ = 60)



p

119



pp

ppp