



GAVOTTE DES BAISERS

pour orchestre d'harmonie

Saxophone ténor 1

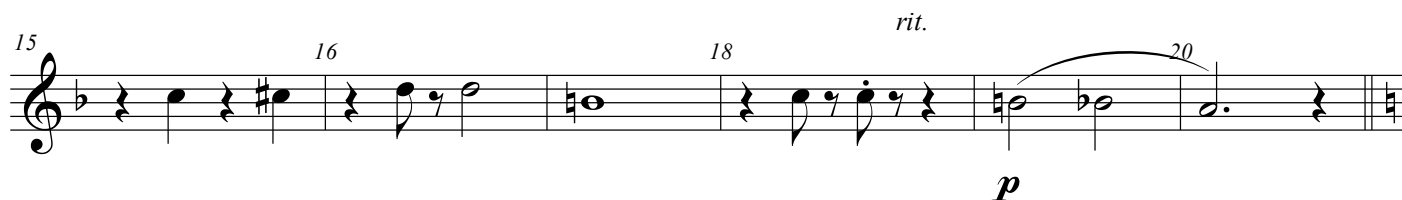
Orchestration :
Serge DALLE LUCHE

Francis POPPY
(1874-1928)

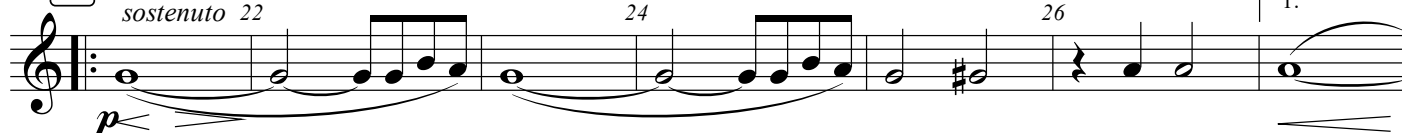
Moderato $\text{♩} = 90$



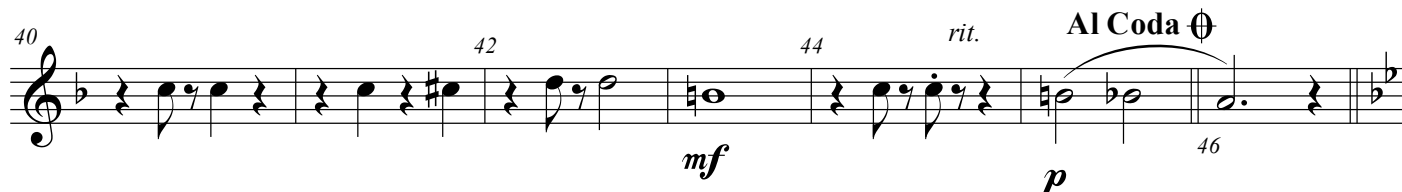
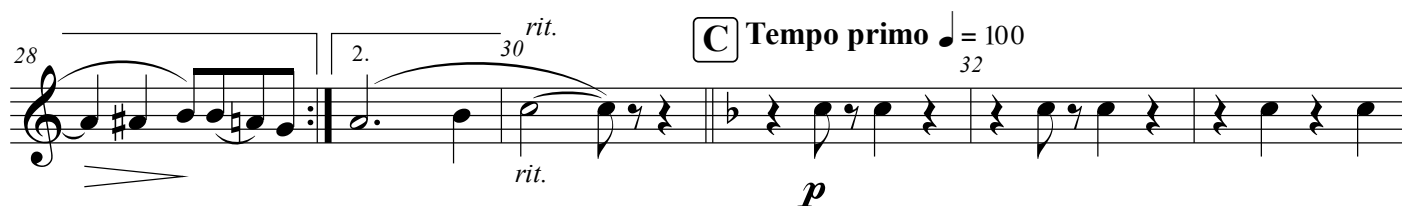
[A] $\text{♩} = 100$
T° di Gavotte



[B] *più mosso* $\text{♩} = 112$
sostenuto



[C] *Tempo primo* $\text{♩} = 100$



D TRIO *Più mosso* ♩ = 120

p

rallentando

52 1. 54 2. 56

E *a tempo* ♩ = 120

sffz p

58 60

62 1. 64 2. *rit.* §

CODA 66 2 70

67-68 *ff* *fff*