



GAVOTTE DES BAISERS

pour orchestre d'harmonie

Cor ou Alto Mib 2

Orchestration :
Serge DALLE LUCHE

Francis POPPY
(1874-1928)

Moderato ♩ = 90

mf *mp* *pp*

A T° di Gavotte ♩ = 100
Bruit de baisers 6 8 *Bruit de baisers*

pp

10 12 *rit.* *a tempo* 14

pp

15 16 18 *rit.* 20

pp *mf* *p*

B *più mosso* ♩ = 112

22 24 26

p

27 1. 28 2. 30 *rit.* **C** **Tempo primo** ♩ = 100
Bruit de baisers

rit.

33 34 *Bruit de baisers* 38 *rit.* *a tempo*

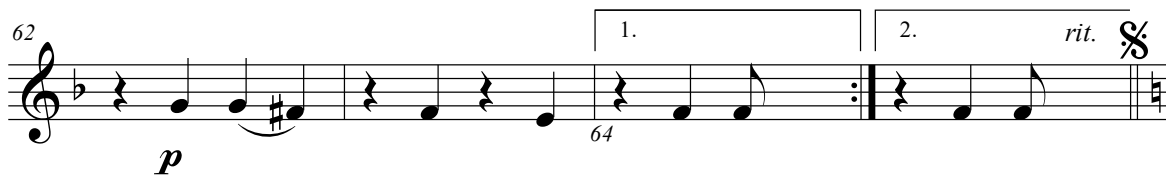
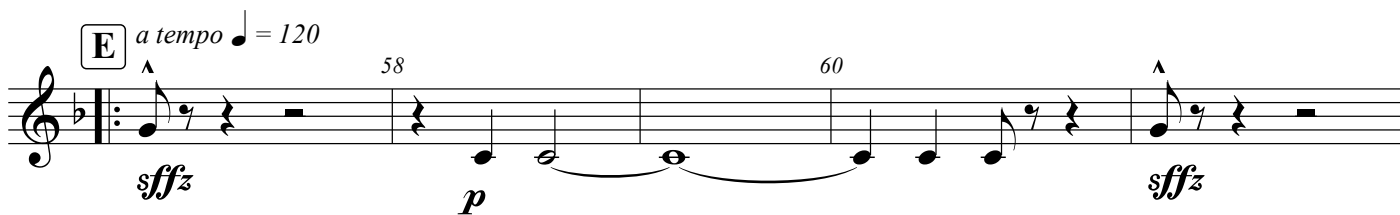
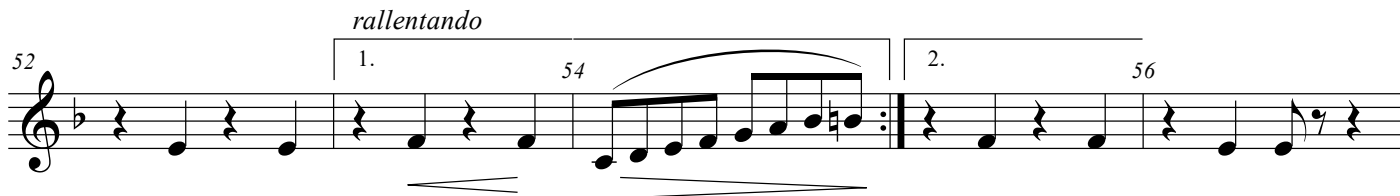
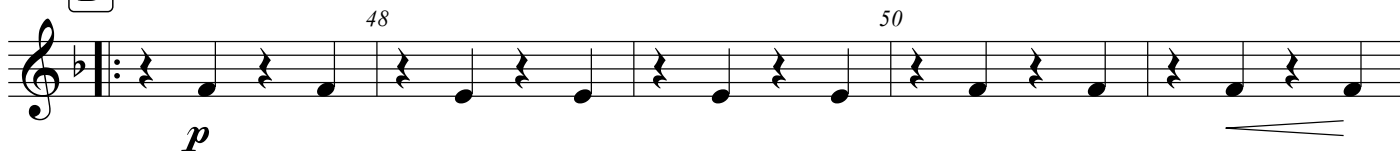
pp *pp*

40 42 44 *rit.* **Al Coda** 46

pp *mf* *p*

TRIO

D Più mosso ♩ = 120



CODA