



# GAVOTTE DES BAISERS

pour orchestre d'harmonie

Francis POPPY  
(1874-1928)

Cor en Fa 1

Orchestration :  
Serge DALLE LUCHE

Moderato ♩ = 90

2 *rit.* 4

*mf* *mp* *pp*

**A** T° di Gavotte ♩ = 100  
Bruit de baisers 6

8 *pp* *Bruit de baisers*

10 *pp* *rit.* 12 *a tempo* *Bruit de baisers* 14

15 *pp* 16 *mf* 18 *p* 20 *rit.*

**B** *più mosso* ♩ = 112

22 24 26 *p*

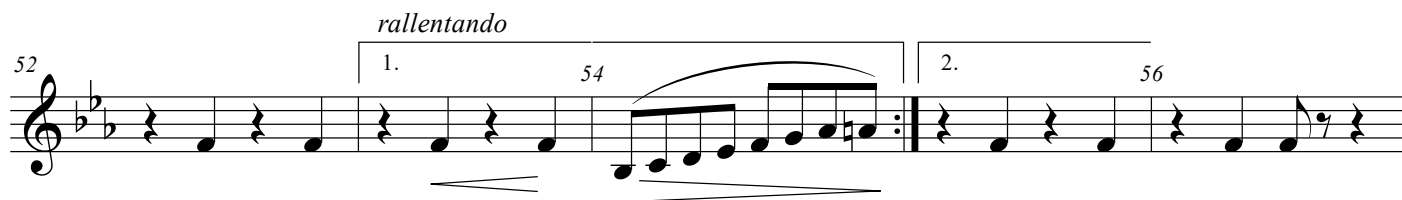
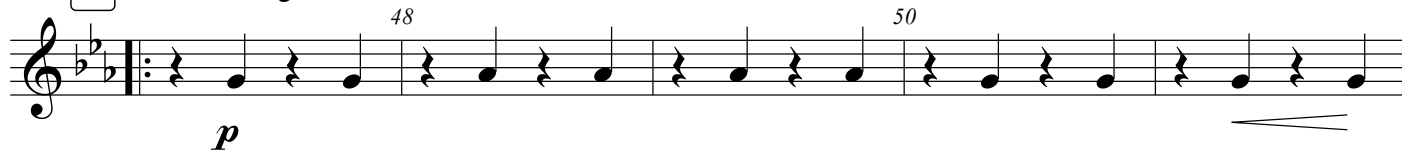
**C** Tempo primo ♩ = 100

27 28 30 *rit.* *Bruit de baisers*

33 *pp* 34 *Bruit de baisers* 36 *pp* 38 *rit.* *a tempo* *Bruit de baisers*

40 *pp* 42 *mf* 44 *p* *rit.* *Al Coda* 46

## TRIO

**D** Più mosso ♩ = 120**E** a tempo ♩ = 120