

Contrabass

# Danza delle ore

Amilcare Ponchielli arr Ioan Dobrinescu

Moderato ♩ = 74  
*pizz.*  
*pp*

7 *afrett.* ♩ = 80 *poco rit.* Tempo ♩ = 74  
*pp* *pp*

12 *afrett.* ♩ = 80 *poco rit.* Tempo ♩ = 74  
*pp*

17 **A**  
*pp*

23 *afrett.* ♩ = 80 *A tempo* ♩ = 74 *poco rit.*  
**2**

30 **B** *A tempo* ♩ = 74  
*pp*

34 *afrett.* ♩ = 80 *poco rit.* *A tempo* ♩ = 74  
*pp* *pp*

39

44 poco rit. **C** Poco meno mosso ♩ = 68

52 poco mosso ♩ = 72 rit. a tempo ♩ = 68

60 poco mosso ♩ = 72 a tempo ♩ = 68 allargando 2 ♩ = 68

66 rit. A tempo ♩ = 74

71 **D** SORTONO LE ORE DELLA NOTTE ♩ = 64

78

85

91

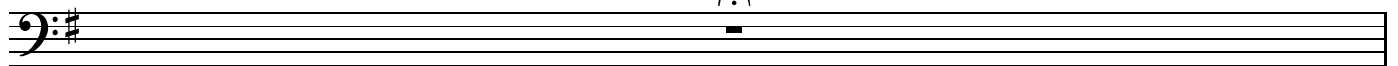
99 **E** ♩ = 70

11

Contrabass

114

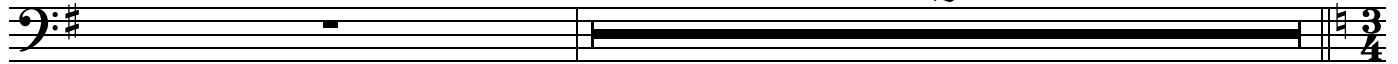
♩ = 44  
◡



115 ♩ = 74

rit..

**2**





173 **J** Con molto brio

arco arco

sf sf

Detailed description: This block contains the first staff of music, measures 173 to 180. It is in the bass clef with a key signature of two sharps (F# and C#). The music starts with a half rest, followed by a quarter note G2, a quarter rest, and another half rest. This pattern repeats. From measure 176, the music becomes more active with eighth notes and quarter notes. Dynamic markings include *sf* (sforzando) under the first and second measures, and *arco* above the first and second measures of the eighth-note section.

181

arco arco

sf sf f

Detailed description: This block contains the second staff of music, measures 181 to 188. It continues the musical pattern from the previous staff. Dynamic markings include *sf* (sforzando) under the first and second measures, and *f* (forte) under the final measure.

189 **K**

pp mf pp

Detailed description: This block contains the third staff of music, measures 189 to 196. The music features a series of eighth notes. Dynamic markings include *pp* (pianissimo) at the beginning and end, and *mf* (mezzo-forte) in the middle.

197

mf pp

Detailed description: This block contains the fourth staff of music, measures 197 to 204. It continues the eighth-note pattern. Dynamic markings include *mf* (mezzo-forte) and *pp* (pianissimo).

205

mf pp

Detailed description: This block contains the fifth staff of music, measures 205 to 212. It continues the eighth-note pattern. Dynamic markings include *mf* (mezzo-forte) and *pp* (pianissimo).

213 **L**

mf

Detailed description: This block contains the sixth staff of music, measures 213 to 220. The music continues with eighth notes. A dynamic marking of *mf* (mezzo-forte) is present.

221

Detailed description: This block contains the seventh staff of music, measures 221 to 228. It continues the eighth-note pattern.

229

ff

Detailed description: This block contains the eighth staff of music, measures 229 to 235. The music features eighth notes with accents. A dynamic marking of *ff* (fortissimo) is present.

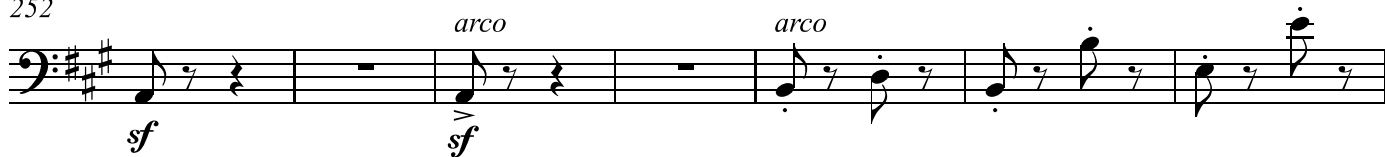
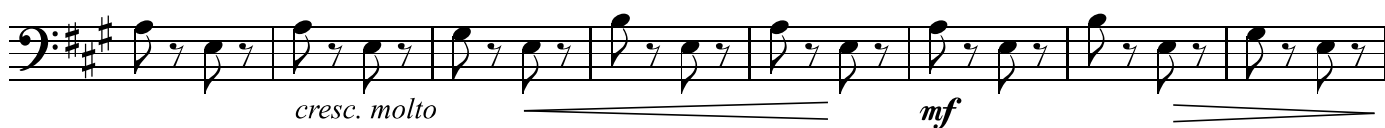
236

poco rit. 2

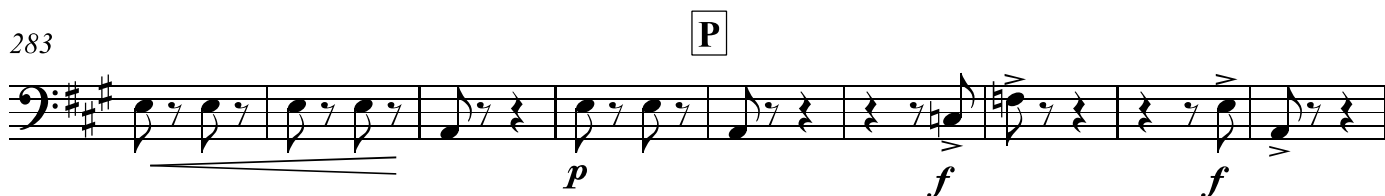
Detailed description: This block contains the ninth staff of music, measures 236 to 242. It features eighth notes with accents. The piece concludes with a *poco rit.* (poco ritardando) marking and a final double bar line with a '2' below it, indicating a repeat or a specific ending.

244 **M** ♩ = 160

252

259 **N** *cresc. molto*267 *cresc. molto*275 **O** **Con brio** ♩ = 160

283



292



301



308

