

Serban Nichifor

TRANSYLVANIAN BLUEGRASS

Celli & Bassi

Cello (& Cb.)

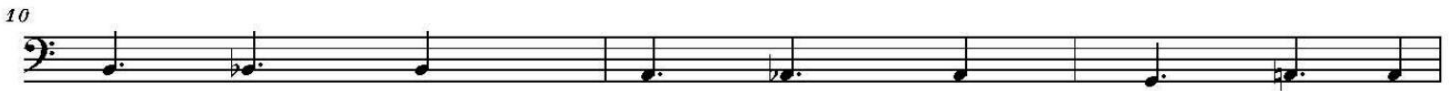
1.) TACET

2.) Hora

Allegro Vivo

Serban NICHIFOR

$\text{♩} = 165$



34

38

42

46

49

$\text{♩} = 60$ fz *attacca subito*

Allegro

3.) Batraneasca

Serban NICHIFOR

♩ = 144 simile

13

25 ♩ = 150 simile

36 simile

48 *fff* *f* *ff*

60 ♩ = 120 ♩ = 70 ♩ = 180 *fff* *mf* simile *mf* *mf*

70 *ff*

83 ♩ = 150 ♩ = 140 ♩ = 100 ♩ = 80 ♩ = 40 *ff*

attacca subito

Deciso

4.) Csardas

Serban Nichifor

♩ = 70

ff *mf*

11

23 *ff*

32 ♩ = 64 ♩ = 54 ♩ = 110 *fff* *mp* *fff* *f*

37 ♩ = 120 *mp* *f* *f*

46 ♩ = 130 *mp* *f* *f*

55 ♩ = 140 ♩ = 150

64 ♩ = 80 ♩ = 70 ♩ = 60 ♩ = 50 ♩ = 40

5-IX-2014

5.) Ländler

Tempo di Ländler

Serban Nichifor

7

12

16

20

25

30

33

36

41

f *mf* *ff*

7-IX-2014

6.) TACET

Presto possibile

7.) Perpetuum Mobile

Serban NICHIFOR

$\text{♩} = 180$

ff

11 *f* *mf* *f* *ff* *mf*

23

33

41 *mp* *f* *mf*

61 *ff* *ff*

72 *mf* *f* *ff* *fz*

$\text{♩} = 60-30$

May 25, 2013

