

Serban Nichifor

TRANSYLVANIAN BLUEGRASS

Viole

Viola

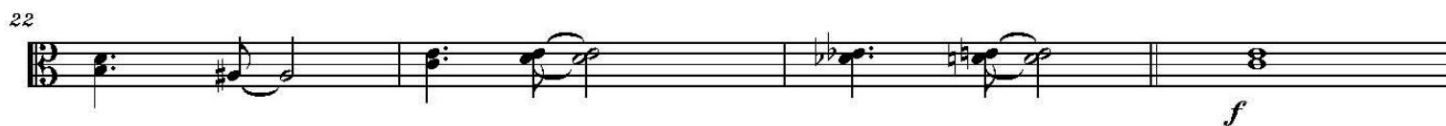
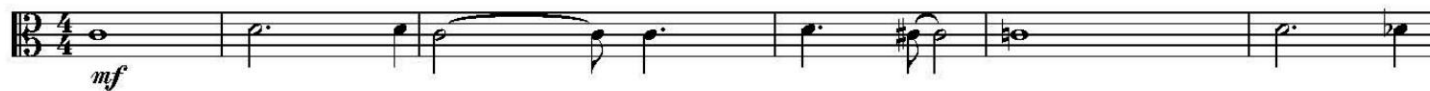
1.) TACET

Allegro Vivo

2.) Hora

Serban NICHIFOR

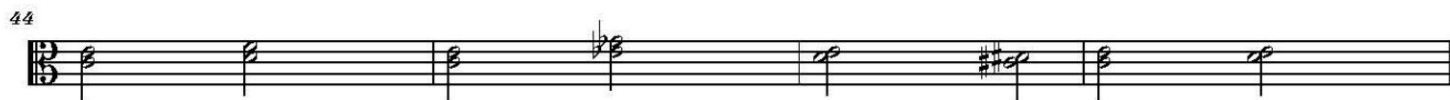
$\text{♩} = 165$



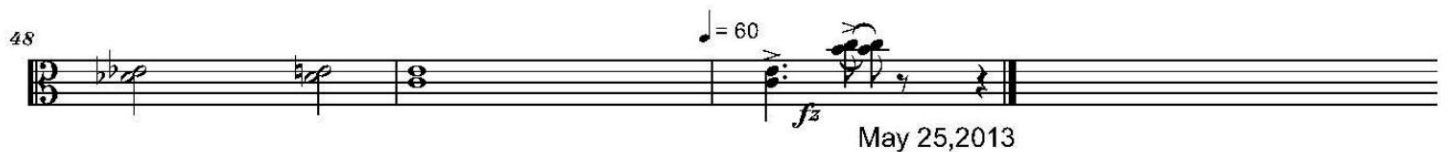
39



44



48



♩ = 60

fz

May 25, 2013

Allegro

3.) Batraneasca

Serban NICHIFOR

♩ = 144

simile

mf

8

15

22

29

♩ = 150

f simile

40

simile

50

ff *f*

59 $\text{♩} = 120$ $\text{♩} = 70$ $\text{♩} = 180$

ff *fff* *p* simile

65

mp *mp*

72

79

86 $\text{♩} = 150$ $\text{♩} = 140$ $\text{♩} = 100$ $\text{♩} = 80$

f

93 $\text{♩} = 40$

f

4.) Csardas

Deciso

Serban Nichifor

♩ = 70

ff *mf*

11

22 *f* *mf*

28 ♩ = 64 ♩ = 54

33 ♩ = 110 *fff* *mp* *fff* *mf*

38

43 ♩ = 120 *mp* *f* *mf*

48 ♩ = 130 *mp* *f*

53 *mf*

59 ♩ = 140

63 ♩ = 150 ♩ = 80 ♩ = 70 ♩ = 60 ♩ = 50 ♩ = 40

5.) Ländler

Tempo di Ländler

Serban Nichifor

7

12

16

20

25

30

33

36

41

f

mf

ff

6.) TACET

Presto possibile

7.) Perpetuum Mobile

Serban NICHIFOR

♩ = 180

f

6

mf *f* *mp*

14

f *ff* *mp*

26

f *mp*

37

mp

48

f *mf*

59

f

68

f

73

f *ff*

82

♩ = 60-30

fz