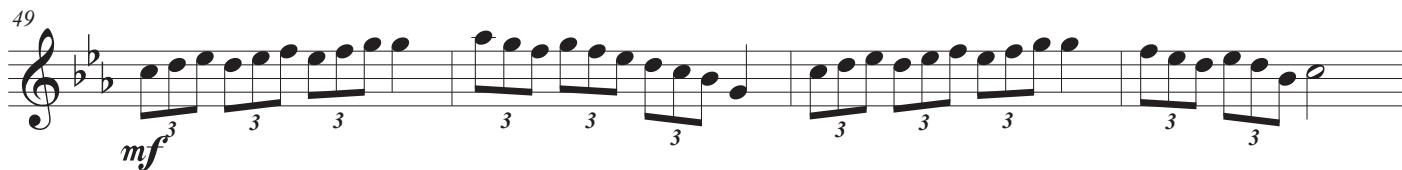
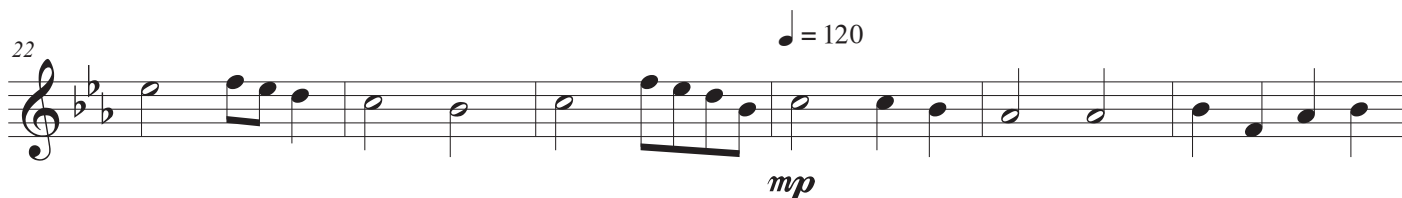
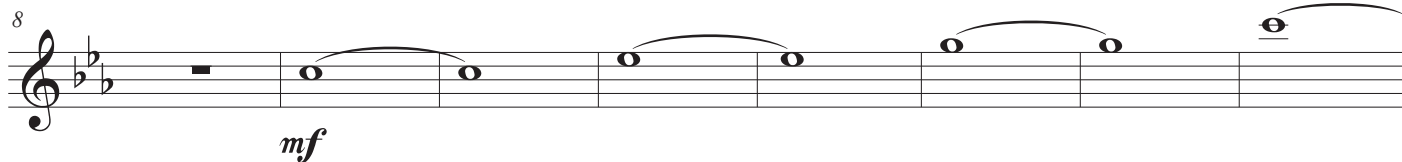
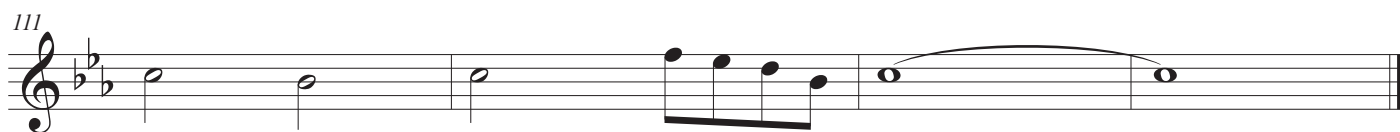
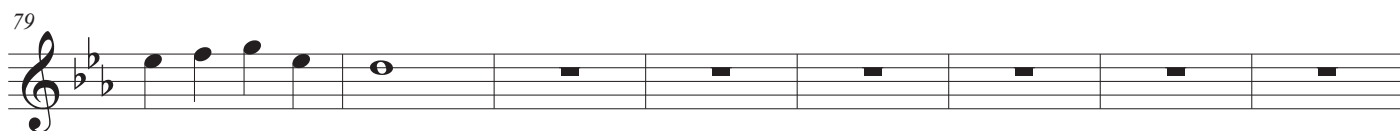
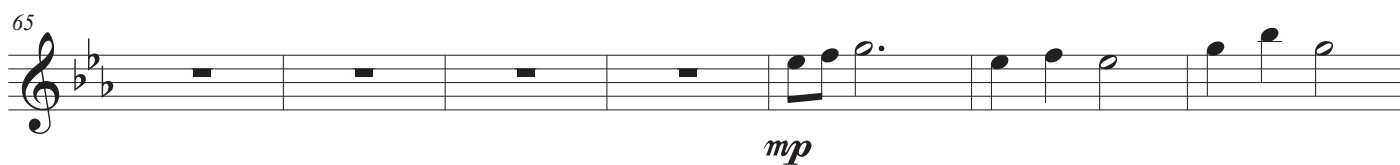


Una corsa nel vento

di Alfredo Muzzi

♩ = 135





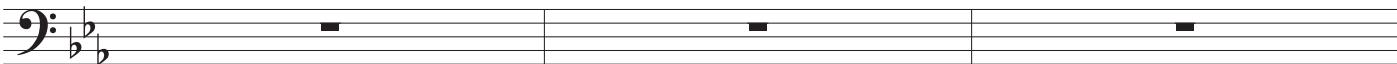
Una corsa nel vento

di Alfredo Muzzi

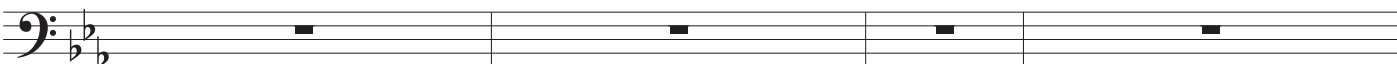
♩ = 135



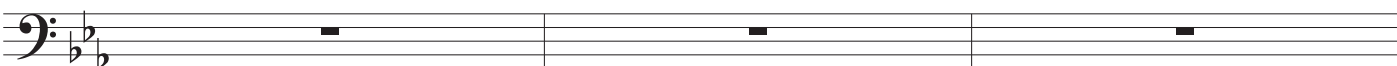
4



7



11



14



18



24

♩ = 120



31



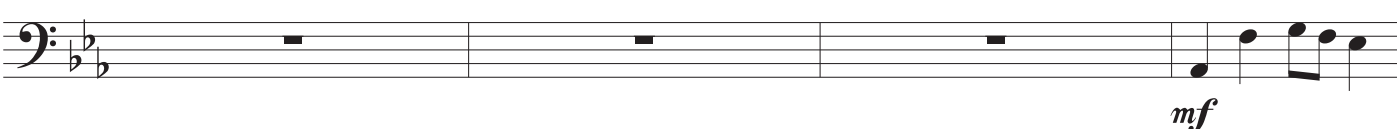
38



45



50



54



2
60

Una corsa nel vento

mp

66

73

80

$\text{♩} = 135$

87

91

94

mf

98

104

110

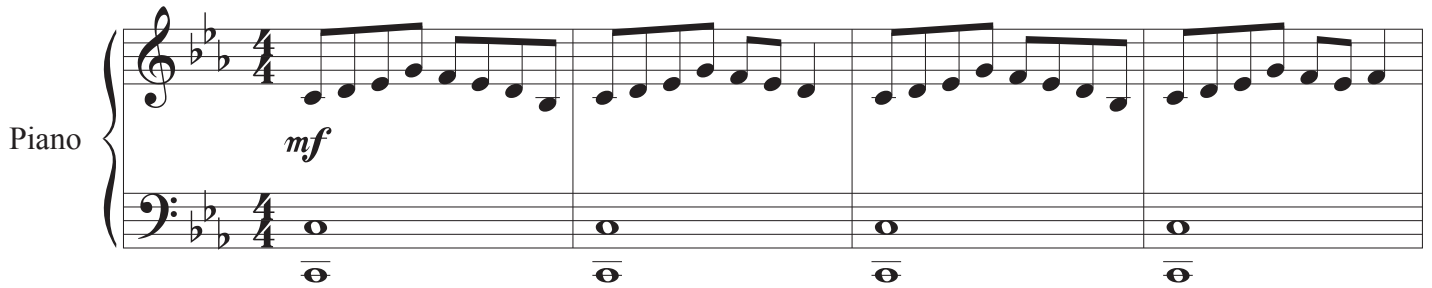
Piano

Una corsa nel vento

di Alfredo Muzzi

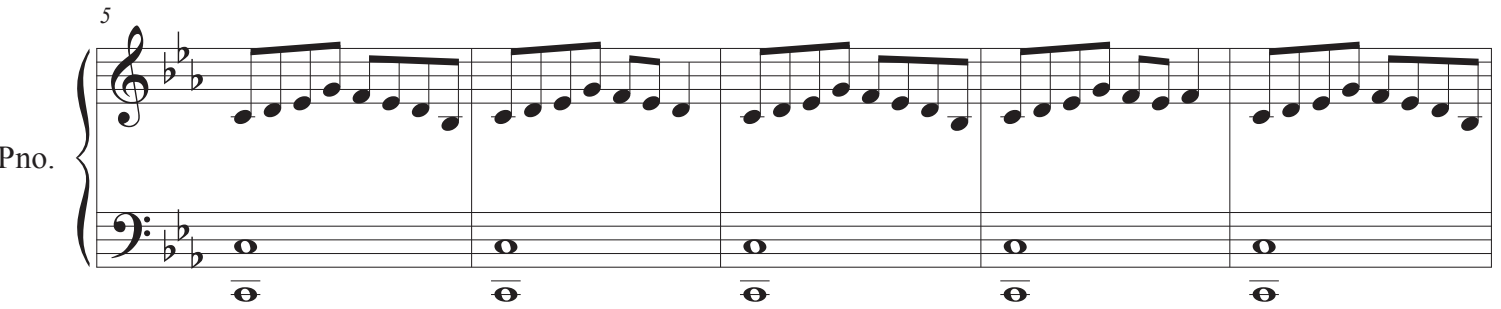
♩ = 135

Piano

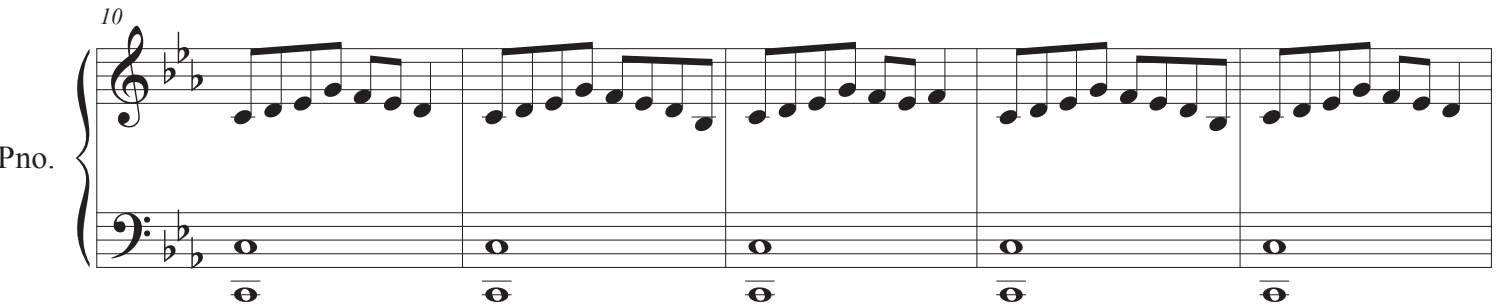


mf

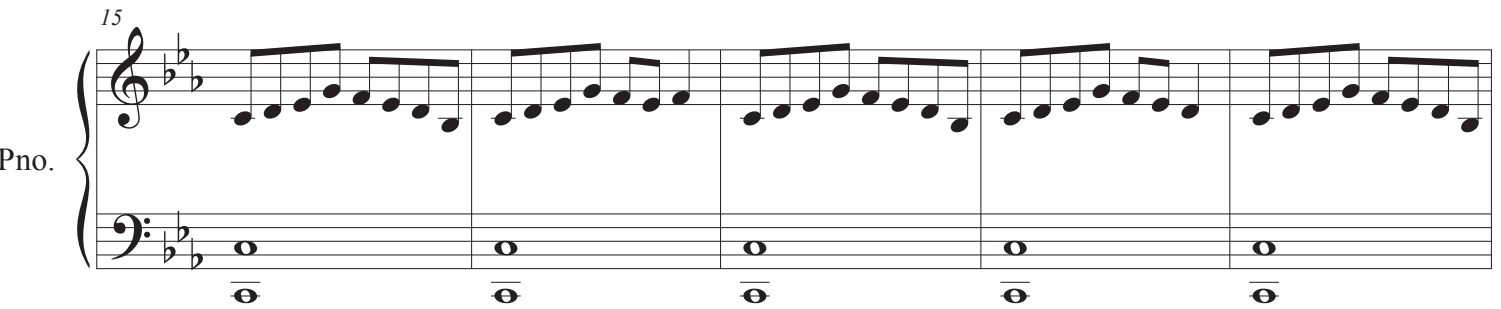
Pno.



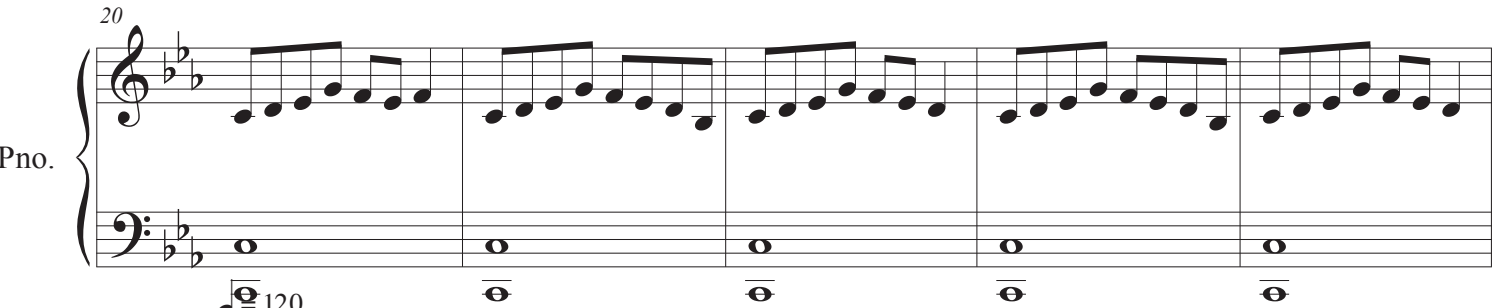
Pno.



Pno.



Pno.



Pno.



mp

Una corsa nel vento

2
30

Pno.

35

Pno.

41

Pno.

46

Pno.

mf

53

Pno.

58

Pno.

Una corsa nel vento

62

Pno.

mp

This system contains measures 62 to 66. The right hand features a melodic line with eighth and sixteenth notes, while the left hand provides a harmonic accompaniment with chords and single notes. A dynamic marking of *mp* is present in measure 64.

67

Pno.

This system contains measures 67 to 72. The right hand continues the melodic development with a mix of eighth and quarter notes. The left hand maintains a steady accompaniment pattern.

73

Pno.

This system contains measures 73 to 78. The right hand has a more active melodic line with eighth notes. The left hand accompaniment consists of chords and moving lines.

79

Pno.

This system contains measures 79 to 84. The right hand features a melodic line with eighth notes and quarter notes. The left hand accompaniment is consistent with the previous systems.

85

Pno.

$\text{♩} = 135$

mf

This system contains measures 85 to 89. A tempo marking of $\text{♩} = 135$ is placed above the staff. A dynamic marking of *mf* is present in measure 87. The right hand has a more complex melodic line with sixteenth notes.

90

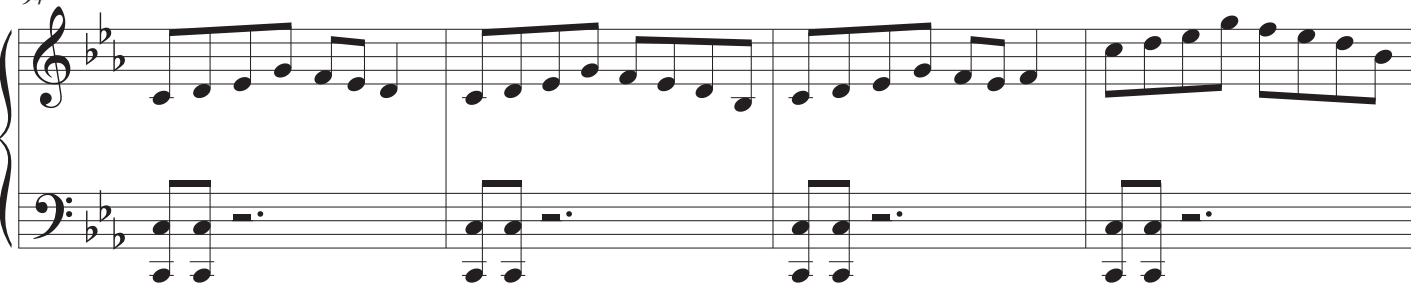
Pno.

This system contains measures 90 to 94. The right hand features a melodic line with eighth notes. The left hand accompaniment consists of chords and moving lines.

Una corsa nel vento


4
94

Pno.




98

Pno.



102

Pno.



106

Pno.



110

Pno.

