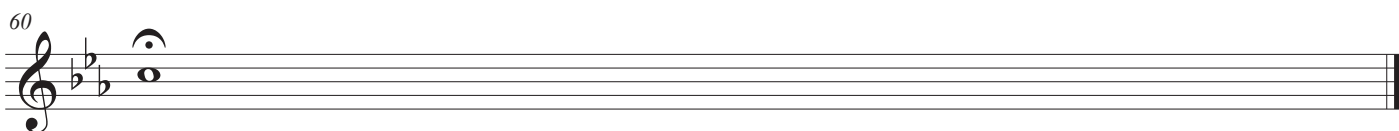
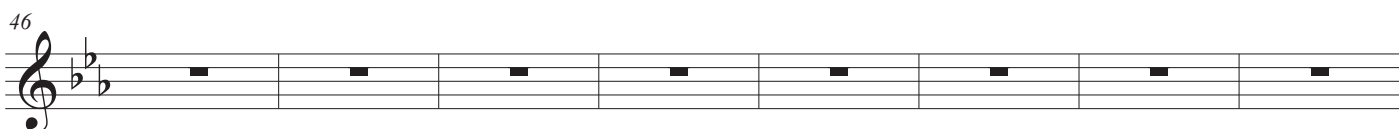
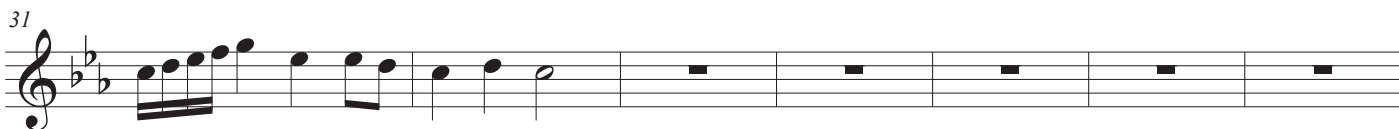
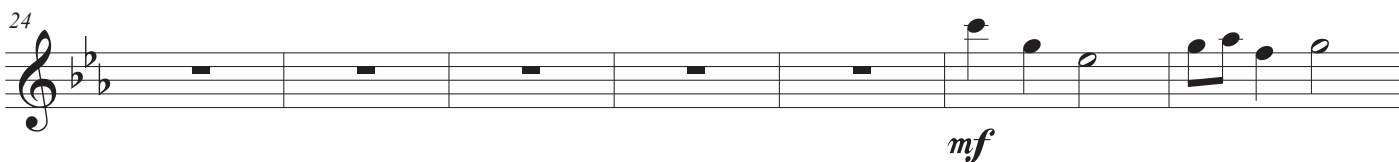
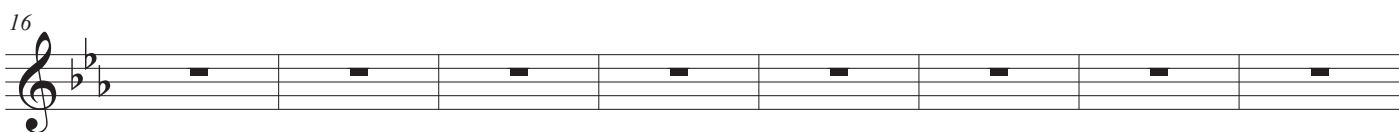
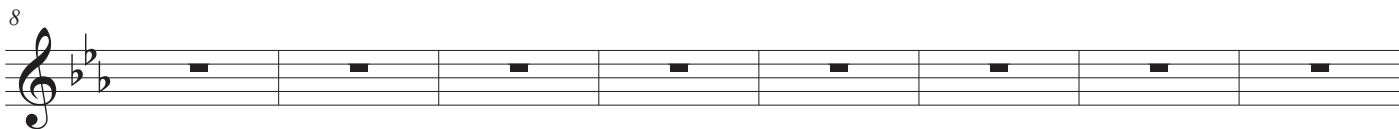


# Galassie

di Alfredo Muzzi

♩ = 60



# Galassie

di Alfredo Muzzi

♩ = 60



8



15



22



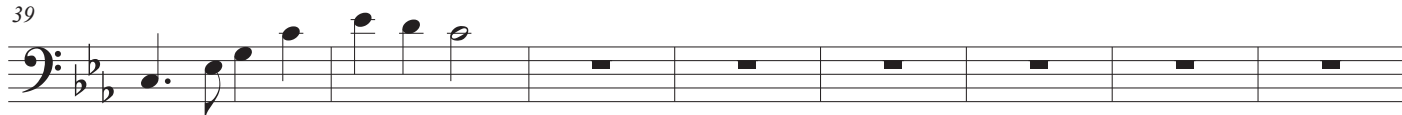
28



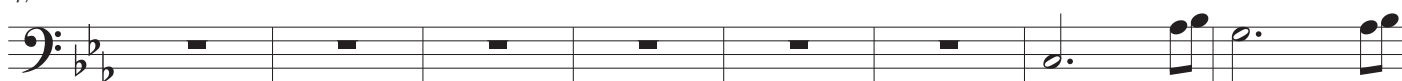
34



39



47



55



Harp

# Galassie

di Alfredo Muzzi

♩ = 60

Harp

*mf*

5

Hp.

10

Hp.

18

Hp.

26

Hp.

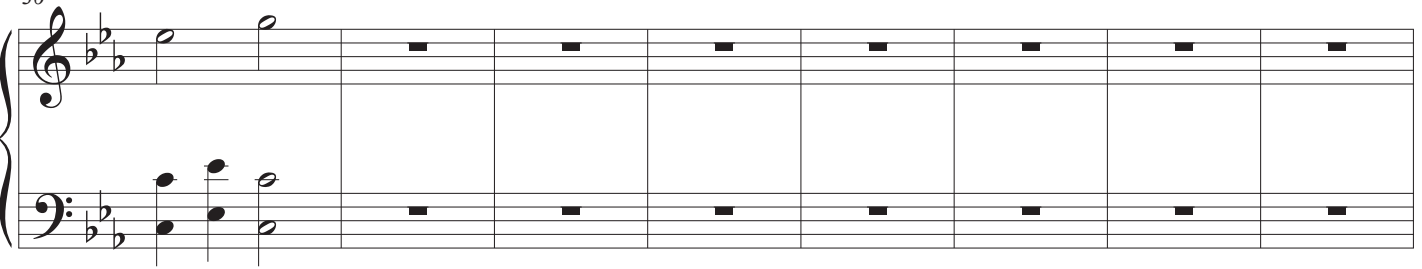
31

Hp.

Galassie

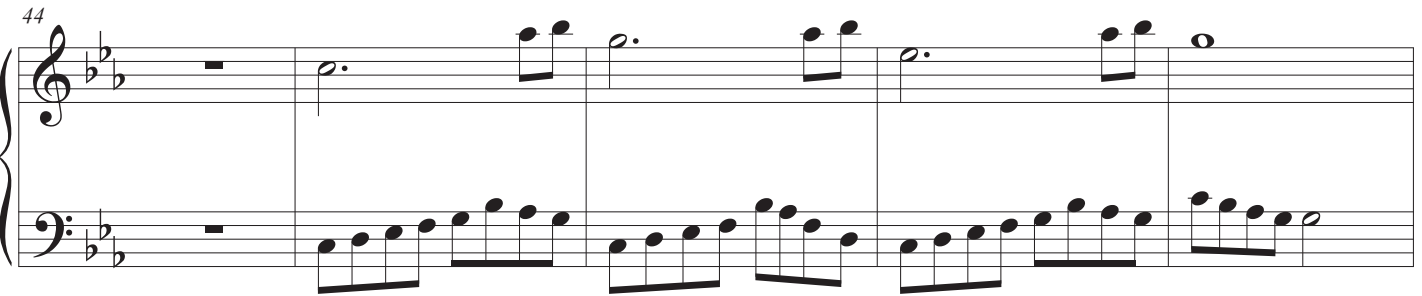
2  
36

Hp.



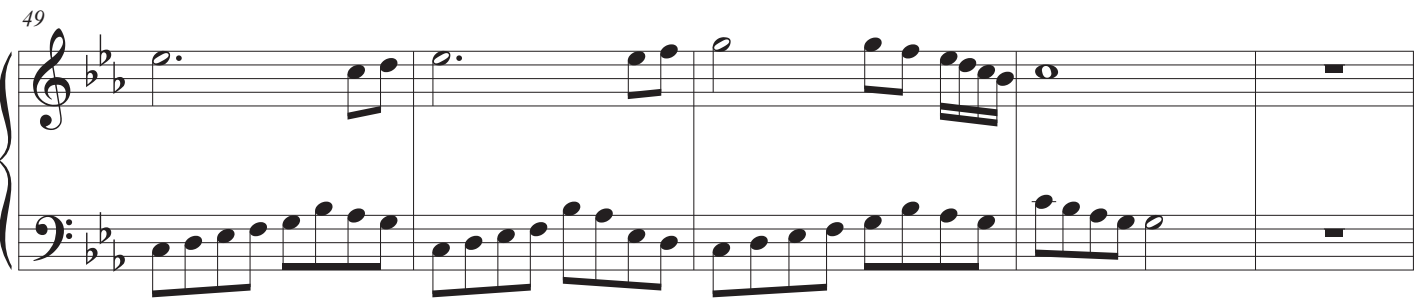
44

Hp.



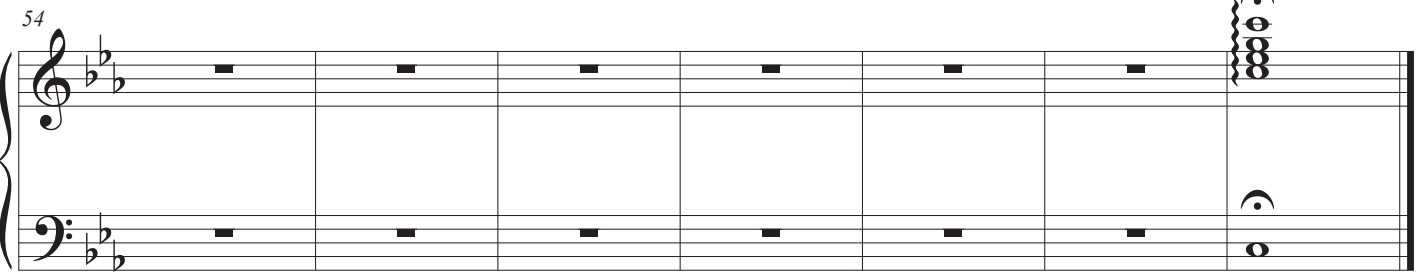
49

Hp.



54

Hp.





50



56



# Galassie

di Alfredo Muzzi

♩ = 60

Musical staff with a 4/4 time signature. Above the staff, there are seven circled 'X' marks, one above each of the first seven measures.

*f*

9

Musical staff starting at measure 9. Asterisks are placed above the first and eighth measures (measures 9 and 14).

15

Musical staff starting at measure 15. An asterisk is placed above the sixth measure (measure 18).

21

Musical staff starting at measure 21. Asterisks are placed above the first, sixth, and eleventh measures (measures 21, 26, and 31).

26

Musical staff starting at measure 26. Asterisks are placed above the second and seventh measures (measures 28 and 33).

31

Musical staff starting at measure 31. Asterisks are placed above the first, sixth, and eleventh measures (measures 31, 36, and 41).

36

Musical staff starting at measure 36. Asterisks are placed above the second and seventh measures (measures 38 and 43).

41

Musical staff starting at measure 41. An asterisk is placed above the second measure (measure 43). Circled 'X' marks are placed above the fifth, eighth, and eleventh measures (measures 46, 49, and 52).

48

Musical staff starting at measure 48. Circled 'X' marks are placed above the first, fourth, seventh, tenth, and thirteenth measures (measures 48, 51, 54, 57, and 60). An asterisk is placed above the sixteenth measure (measure 63).

56

Musical staff starting at measure 56. An asterisk is placed above the second measure (measure 58). A circled 'X' mark is placed above the eighth measure (measure 64).