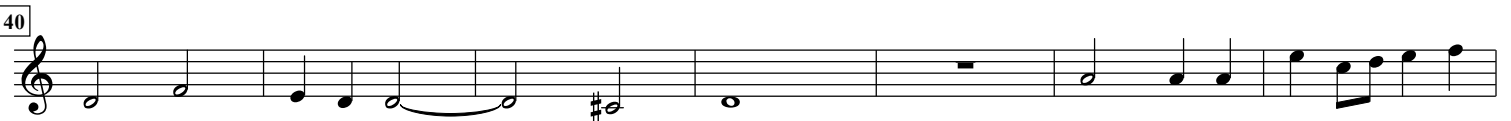
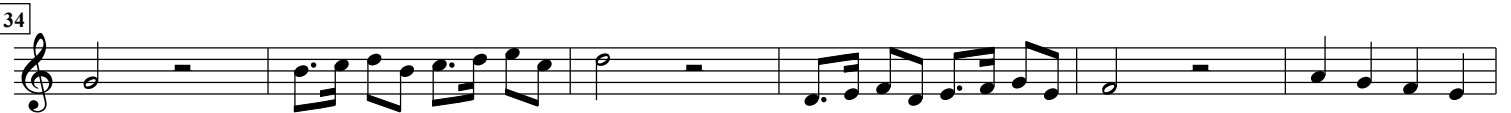


La Crescendola

arr. Hans Jorgen Messerschmidt

Giulio Mussi (1650)



68

Trumpet C

The musical notation for Trumpet C in measure 68 consists of a single staff with a treble clef. The notes are: G4 (quarter), A4 (quarter), B4 (quarter), C5 (quarter), B4 (quarter), A4 (quarter), G4 (quarter), F4 (quarter), E4 (quarter), D4 (quarter), and C4 (quarter). A fermata is placed over the final C4 note. The measure ends with a double bar line.