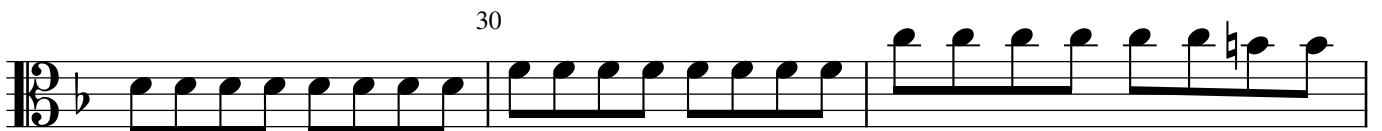
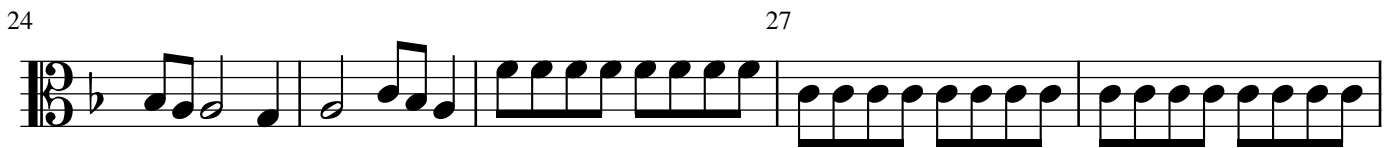
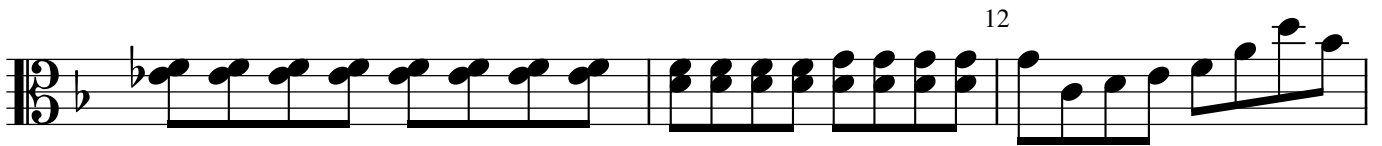
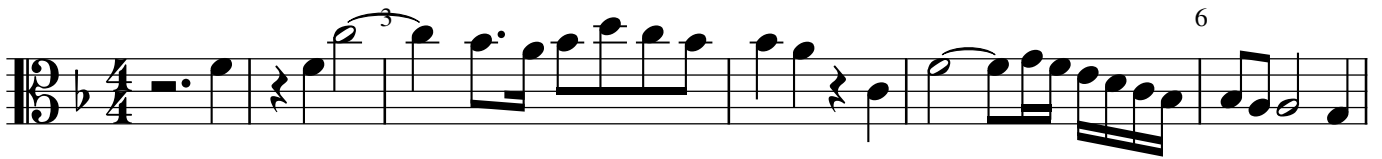


Violon alto

# Messe en C , KV 427

## Laudamus te ( 3 )

Mozart



36 39

42

45 48

51

54

57

60 63

66

69 72

Detailed description: This image shows a musical score for a bass clef instrument, likely a double bass or electric bass. The score is written in a single system with a key signature of one flat (B-flat) and a common time signature (C). The music is divided into measures, with measure numbers 36, 39, 42, 45, 48, 51, 54, 57, 60, 63, 66, 69, and 72 marked above the staff. The notation includes eighth notes, quarter notes, and half notes, often beamed together in groups. There are some accidentals, such as a sharp sign on the F line in measure 45 and a flat sign on the C line in measure 63. The score ends with a double bar line at measure 72.

75 78

81 84

87 90

93

96 99

102

105 108

111 48