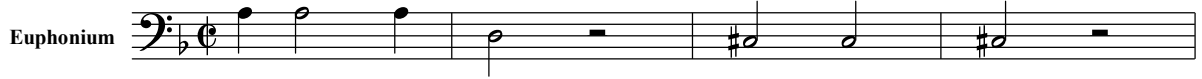


Don Giovanni - Overture

arr. Hans Jorgen Messerschmidt

Wolfgang Amadeus Mozart (1756-1791)

Andante (♩=100)



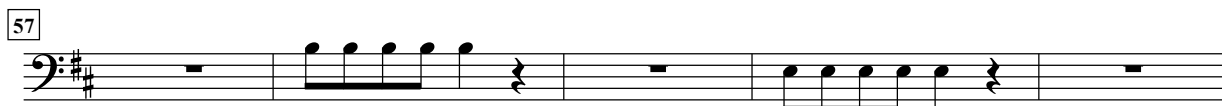
48
Euphonium



52



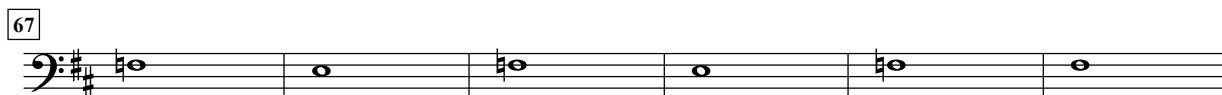
57



62



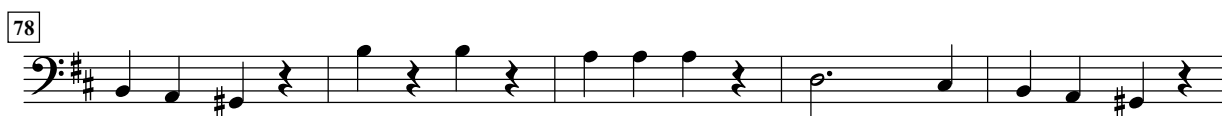
67



73



78



83



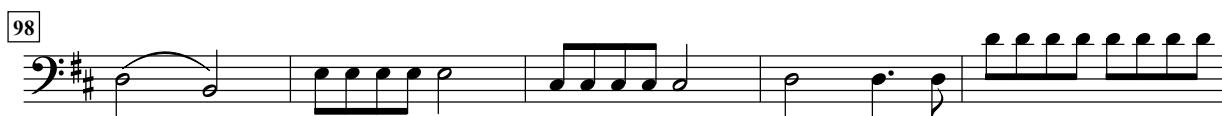
88



93



98



103
Euphonium

107

112

117

122

127

132

137

142

148

153

158

Euphonium

Musical notation for Euphonium, measures 158-161. The staff is in bass clef with a key signature of one sharp (F#). The music consists of quarter notes and rests, with a half note at the end of the fourth measure.

162

Musical notation for Euphonium, measures 162-166. The staff is in bass clef with a key signature of one sharp (F#). The music consists of quarter notes and rests, with a half note at the end of the fourth measure.

167

Musical notation for Euphonium, measures 167-171. The staff is in bass clef with a key signature of one sharp (F#). The music consists of quarter notes and rests, with a half note at the end of the fourth measure.

172

Musical notation for Euphonium, measures 172-176. The staff is in bass clef with a key signature of one sharp (F#). The music consists of quarter notes and rests, with a half note at the end of the fourth measure.

177

Musical notation for Euphonium, measures 177-181. The staff is in bass clef with a key signature of one sharp (F#). The music consists of quarter notes and rests, with a half note at the end of the fourth measure.

182

Musical notation for Euphonium, measures 182-186. The staff is in bass clef with a key signature of one sharp (F#). The music consists of quarter notes and rests, with a half note at the end of the fourth measure.

187

Musical notation for Euphonium, measures 187-191. The staff is in bass clef with a key signature of one sharp (F#). The music consists of quarter notes and rests, with a half note at the end of the fourth measure.

192

Musical notation for Euphonium, measures 192-196. The staff is in bass clef with a key signature of one sharp (F#). The music consists of quarter notes and rests, with a half note at the end of the fourth measure.

197

Musical notation for Euphonium, measures 197-201. The staff is in bass clef with a key signature of one sharp (F#). The music consists of quarter notes and rests, with a half note at the end of the fourth measure.

202

Musical notation for Euphonium, measures 202-206. The staff is in bass clef with a key signature of one sharp (F#). The music consists of quarter notes and rests, with a half note at the end of the fourth measure.

207

Musical notation for Euphonium, measures 207-211. The staff is in bass clef with a key signature of one sharp (F#). The music consists of quarter notes and rests, with a half note at the end of the fourth measure.

212
Euphonium

217

223

228

233

238

243

248

253

259

265

270

Euphonium



Musical notation for Euphonium, measures 270-273. The key signature is two sharps (F# and C#). The notation consists of a single staff with a bass clef. Measure 270 starts with a half note G2, followed by quarter notes A2, B2, and C3. Measure 271 has quarter notes D3, E3, F#3, and G3. Measure 272 has a half note G3, a quarter rest, and a half note A3. Measure 273 has a half note B3, a quarter rest, and a half note C4.

274




Musical notation for Euphonium, measures 274-278. The key signature is two sharps (F# and C#). The notation consists of a single staff with a bass clef. Measure 274 has a half note G2, a quarter rest, and a half note A2. Measure 275 has a half note B2, a quarter rest, and a half note C3. Measure 276 has quarter notes D3, E3, F#3, and G3. Measure 277 has quarter notes A3, B3, C4, and D4. Measure 278 has quarter notes E4, F#4, G4, and A4.

279



Musical notation for Euphonium, measures 279-282. The key signature is two sharps (F# and C#). The notation consists of a single staff with a bass clef. Measure 279 has quarter notes B3, C4, D4, and E4. Measure 280 has quarter notes F#4, G4, A4, and B4. Measure 281 has quarter notes C5, B4, A4, and G4. Measure 282 has a half note F#4, a quarter rest, and a half note E4.

283



Musical notation for Euphonium, measures 283-284. The key signature is two sharps (F# and C#). The notation consists of a single staff with a bass clef. Measure 283 has a half note G2, a quarter rest, and a half note A2. Measure 284 has a half note B2, a quarter rest, and a half note C3. The piece ends with a double bar line.