

2nd Tuba in F

Csardas

Vittorio Monti arr. Ioan Dobrinescu

Largo maestoso ♩ = 60 6 **A** **Largo** ♩ = 62

f *pp*

7 ♩ = 66 *poco rit.* *mp* ♩ = 64

11 ♩ = 66 *poco rit.* **B** ♩ = 64 *f* *p*

15 *p* *p* *ppp* *molto rall.* *veloce* 7 3

18 ♩ = 56 *p* ♩ = 64

20 ♩ = 56 *f*

22 **C** Allegro vivace ♩ = 160

pp

30 *cresc. molto*

p mp

38 **D**

<f p *soutille*

45

mp

50 *cresc. molto*

f

54 **E**

p pp

62 *cresc. molto*

pp mp

70 **F**

mf p

75

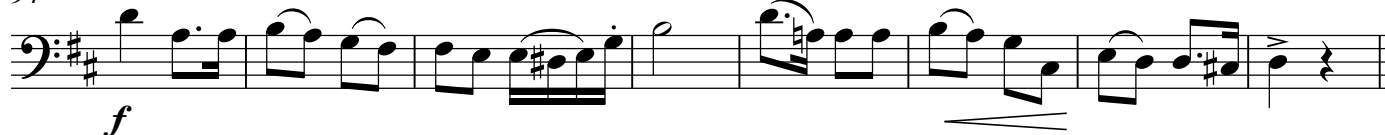
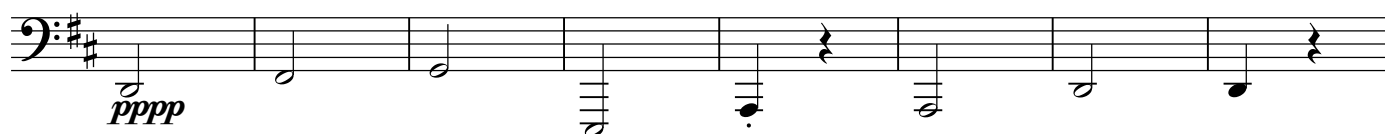
ppp

82 *cresc. molto*

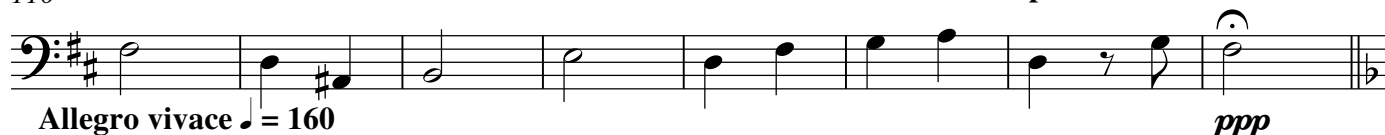
mf

86 **G** Molto meno mosso ♩ = 64

94

102 **H** Molto meno, quasi Lento ♩ = 50

110



Allegro vivace ♩ = 160

118 **I**

124



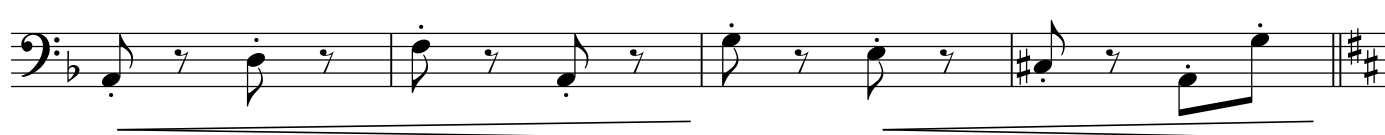
129

134 **J**

140



144



148 **Allegretto** ♩ = 112

f *p* *soutille*

155

mf

160 *cresc. e rall poco a poco* **rall.**

mf

♩ = 92 *stentato* **rall.** **A tempo** ♩ = 160 **accel.**

164

mp

172 **Molto più Vivo** ♩ = 192 *stringendo sempre*

ff

177

ff