

# Miniature Suite for orchestra

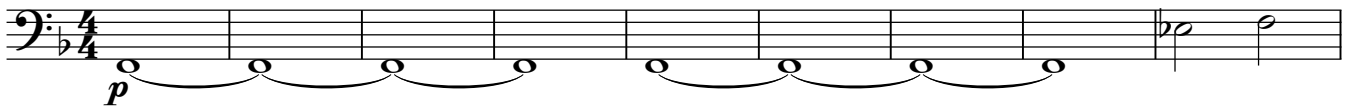
Contrabass

## 1. Prelude

Ann Marshall

♩ = 60

5

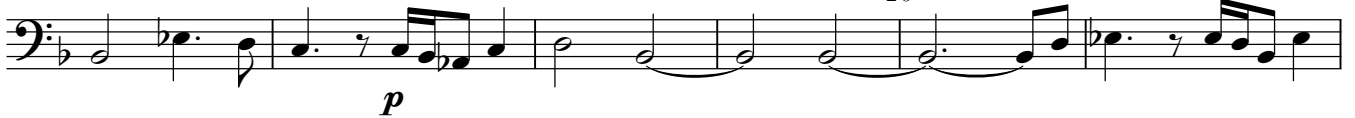


10

15



20



25



29-31

35



♩ = 114

40



45



50



55



60



© 2021 A M Marshall

free-scores.com

65 *mf arco* *mp* *mf* *mp* *mf* *rall.*

70 ♩ = 80 *rall.*

75 ♩ = 60 80 *mp*

Detailed description: This section of the score consists of three staves of music in bass clef with a key signature of one flat. The first staff (measures 65-70) features a melodic line with dynamics *mf arco*, *mp*, *mf*, *mp*, and *mf*, ending with a *rall.* marking. The second staff (measures 70-75) begins with a tempo marking of ♩ = 80 and a *rall.* marking. The third staff (measures 75-80) has a tempo marking of ♩ = 60 and a *mp* dynamic. The piece concludes with a double bar line.

### 2. Andante

♩ = 70 *p* 10 15 20 22-23 25 27-28 30 *mp* 35 *rall.* *p*

Detailed description: This section is titled '2. Andante' and is in bass clef with a key signature of one flat. It begins with a tempo marking of ♩ = 70 and a *p* dynamic. The first staff (measures 1-10) includes a 5-measure rest. The second staff (measures 10-15) includes a 15-measure rest. The third staff (measures 15-20) includes a 20-measure rest. The fourth staff (measures 20-28) includes rests for measures 22-23 and 27-28. The fifth staff (measures 28-35) includes a 30-measure rest. The piece concludes with a double bar line and a *p* dynamic.

## 3. Allegro

$\text{♩} = 144$

*mp*

5 10

*mf*

15

20 25 *mp*

30 35

40 45 *mf*

50

55 60 61-72 **12**

Musical score for bass clef, measures 75-115. The score is written in a single system with five staves. The key signature is one flat (B-flat). The dynamics are *p*, *mp*, *mf*, and *f*. The score includes various musical notations such as slurs, accents, and dynamic markings.

Measure 75: *p* (piano). Slurs over measures 75-76 and 77-78.

Measure 80: *p* (piano). Slur over measures 80-81.

Measure 85: *mp* (mezzo-piano). Slur over measures 85-86.

Measure 90: *mp* (mezzo-piano). Slur over measures 90-91.

Measure 95: *mf* (mezzo-forte). Slur over measures 95-96.

Measure 100: *mf* (mezzo-forte). Slur over measures 100-101.

Measure 105: *f* (forte). Slur over measures 105-106.

Measure 110: *f* (forte). Slur over measures 110-111.

Measure 115: *f* (forte). Slur over measures 115-116.