

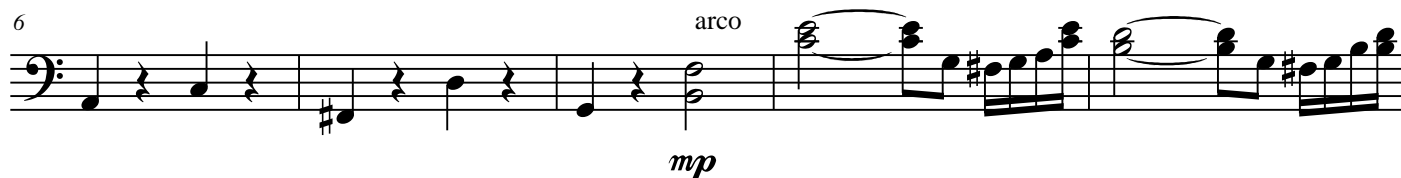
Balada romántica

Violoncelle

Dúo para clarinete y chelo

Alain Lefébure

Moderato (♩ = c. 108)



41

45

mf

dim.

p

3 3 3

Detailed description: This image shows a musical score for a piece titled 'Balada romántica'. The score is written for a single melodic line in a 2/4 time signature, indicated by a treble clef and a '2' over a '4'. The key signature has one sharp (F#), indicating the key of D major or F# minor. The score is divided into two systems. The first system, starting at measure 41, contains measures 41 through 44. It begins with a half note D4, followed by a quarter note E4, a quarter note F#4, and a half note G4. Measure 42 has a half note A4. Measure 43 has a half note B4. Measure 44 has a half note C5. The second system, starting at measure 45, contains measures 45 through 48. It begins with a half note D5, followed by a quarter note E5, a quarter note F#5, and a half note G5. Measure 46 has a half note A5. Measure 47 has a half note B5. Measure 48 has a half note C6. The score includes various musical notations such as slurs, ties, and dynamic markings. A crescendo hairpin is present in measure 41, and a decrescendo hairpin is present in measure 44. The dynamic marking *mf* (mezzo-forte) is placed below measure 43. The dynamic marking *dim.* (diminuendo) is placed below measure 47, and the dynamic marking *p* (piano) is placed below measure 48. There are also three triplets marked with a '3' below the notes in measures 45, 47, and 48.