

# Violoncelli

# Missa Do-Re-Mi

## 1. Kyrie eleison

Jakub Kowalewski

3 maja 2011

*Andante misterioso* (♩ = 60)

Measures 1-6: Bass clef, 4/4 time signature. The music consists of a series of chords, each with a fermata. The first four measures have a dynamic marking of *p*. The fifth measure has an accent (>) and the sixth measure has a dynamic marking of *p*.

Measures 7-12: Bass clef, 4/4 time signature. Measures 7-9 have a dynamic marking of *p*. Measure 10 has an accent (>). Measure 11 has a dynamic marking of *p*. Measure 12 has a flat sign (b) and a dynamic marking of *p*.

*Festivo e deciso*

Measures 13-18: Bass clef, 4/4 time signature. Measure 13 has a flat sign (b). Measure 14 has an accent (>). Measure 15 has a dynamic marking of *mp*. Measure 16 has a dynamic marking of *mp*. Measure 17 has a dynamic marking of *mp*. Measure 18 has a dynamic marking of *mp*.

Measures 19-24: Bass clef, 4/4 time signature. Measure 19 has a dynamic marking of *mp*. Measure 20 has a dynamic marking of *mp*. Measure 21 has a dynamic marking of *mp*. Measure 22 has a dynamic marking of *mp*. Measure 23 has a dynamic marking of *mp*. Measure 24 has a dynamic marking of *mp* and is marked *marcato*.

*Patetico*

Measures 25-30: Bass clef, 4/4 time signature. Measure 25 has a dynamic marking of *f*. Measure 26 has an accent (>). Measure 27 has an accent (>). Measure 28 has an accent (>). Measure 29 has an accent (>). Measure 30 has an accent (>).

*marcato*

Measures 31-36: Bass clef, 4/4 time signature. Measure 31 has a dynamic marking of *f*. Measure 32 has a dynamic marking of *f*. Measure 33 has a dynamic marking of *f*. Measure 34 has a dynamic marking of *f*. Measure 35 has a dynamic marking of *f*. Measure 36 has a dynamic marking of *f*.

*Cantabile (non rit.)*

Measures 37-42: Bass clef, 4/4 time signature. Measure 37 has a dynamic marking of *p*. Measure 38 has a dynamic marking of *p*. Measure 39 has a dynamic marking of *p*. Measure 40 has a dynamic marking of *p*. Measure 41 has a dynamic marking of *p*. Measure 42 has a dynamic marking of *p*.

# Violoncelli

## Missa Do-Re-Mi

### 2. Gloria

Jakub Kowalewski

7 maja 2011

*Allegro risoluto e ritmico* ( $\text{♩} = 120$ )

*ff* *f*

9

*f*

17

*p*

25

*f*

34

43

*mf*

51

*f* *mf*

59

*mf*

# Violoncelli

## Missa Do-Re-Mi

67

*mf*

75

*Sempre in tempo, ma espressivo e dolce*

84

*p*

94

*p*

*Risoluto e ritmico*

105

*ff*

114

*f*

122

130

*f*

138

# Violoncelli

# Missa Do-Re-Mi

## 3. Credo in unum Deum

Jakub Kowalewski

13 maja 2011

*Semplice* (♩=100)

*ff* *mp*

9

*p*

17

*p*

25

*subito p*

33

*legatissimo*

41

*rit.* *Esspressivo* (♩=80)  
*f > p* *f > p*

49

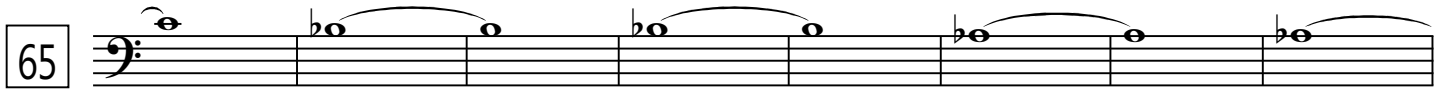
*f > p* *f > p* *mf > p* *mp > p*

57

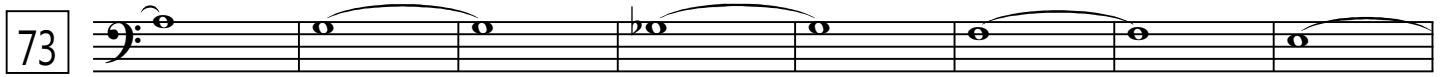
*Tempo primo* (♩=100)  
*pp* *ff*

# Violoncelli

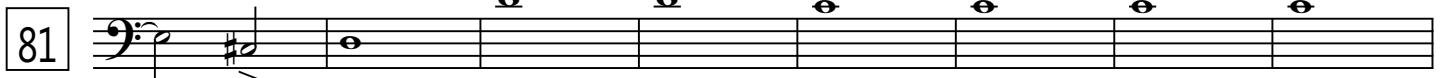
## Missa Do-Re-Mi - 3. Credo in unum Deum

65 

*mf*

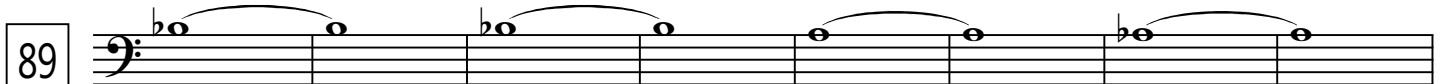
73 

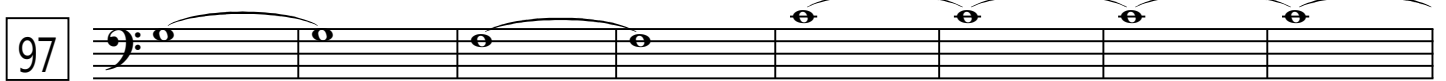
*mp*

81 

*ff* *f*

*p*

89 

97 

*p*

*f*

*pizz.*

105 

*pppp*

*mp*

# Violoncelli

## Missa Do-Re-Mi

### 4. Sanctus & Benedictus

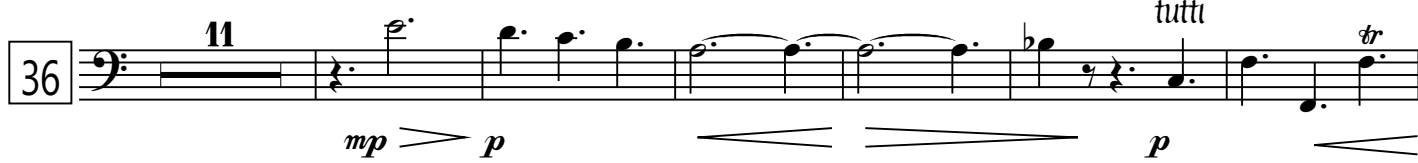
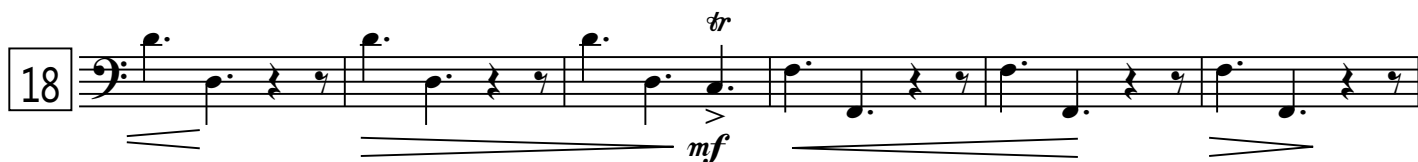
Jakub Kowalewski

5 maja 2011

*Andantino amabile* (♩ = 60)



*mp*



# Violoncelli

# Missa Do-Re-Mi

## 5. Agnus Dei

Jakub Kowalewski

13 maja 2011

*Cantabile e legato* (♩ = 60)

*f*

9

18

27

36

45

*f* non rit.

*Tranquillo* (♩ = 50)

53

*p* *sfz* smorzando

61

*p* *sfz*

68

*pp* *sfz*

76

*pp* *sfz*