

Simfonía 109 - I. Allegro

Violin 2 Orquestració feta a partir del quartet de corda n°63 en Sib M Op.76 n°4 Hob.III:78

F.J.Haydn

13

26

29

32

35

43

50

55

60

p

p

f

mf

f

p

pp

mf

Orquestració feta per Toni Tudurí - març 2014

66

71

81

84

87

90

95

103

114

130

137

p

f

p

f

3

p

f

Detailed description: This is a page of a musical score for a piano piece, consisting of ten staves of music. The key signature is B-flat major (two flats). The score begins at measure 66 and ends at measure 137. The first staff (66-70) features a complex rhythmic pattern of sixteenth notes, followed by a repeat sign and a fermata over a whole note, marked with a piano (*p*) dynamic. The second staff (71-80) starts with a fermata over a whole note, followed by a series of sixteenth notes, marked with a piano (*p*) dynamic. The third staff (81-83) continues with sixteenth notes. The fourth staff (84-86) features a steady eighth-note pattern. The fifth staff (87-89) continues with sixteenth notes. The sixth staff (90-94) features a steady eighth-note pattern, marked with a forte (*f*) dynamic. The seventh staff (95-102) starts with a whole note, followed by eighth notes, marked with a piano (*p*) dynamic. The eighth staff (103-113) features a steady eighth-note pattern, marked with a piano (*p*) dynamic. The ninth staff (114-129) features a steady eighth-note pattern, marked with a piano (*p*) dynamic, and includes a triplet of eighth notes. The tenth staff (130-137) features a steady eighth-note pattern, marked with a forte (*f*) dynamic.

Orquestració feta per Toni Tudurí - març 2014

140

p *mf*

149

f

154

159

p

164

171

pp

178

f

184

Detailed description: This image shows a single melodic line of a musical score, spanning measures 140 to 184. The music is written in a single staff with a treble clef and a key signature of two flats (B-flat and E-flat). The piece begins at measure 140 with a series of eighth notes, followed by a crescendo leading to a piano (*p*) section. The melody then moves to a mezzo-forte (*mf*) section. At measure 149, the music becomes fortissimo (*f*), featuring a series of eighth notes. This is followed by a section of sixteenth-note runs. At measure 159, the music returns to piano (*p*), with a series of eighth notes. The piece then moves to a mezzo-forte (*f*) section, featuring a series of eighth notes. At measure 171, the music becomes pianissimo (*pp*), with a series of eighth notes. The piece concludes at measure 184 with a series of eighth notes.

Orquestració feta per Toni Tudurí - març 2014

Musical score for Adagio, page 4. The score consists of nine staves of music in 3/4 time, featuring various dynamics and articulations.

Staff 1: *mf* *mf*

Staff 2: *p*

Staff 3: *p*

Staff 4: 1.

Staff 5: 2.

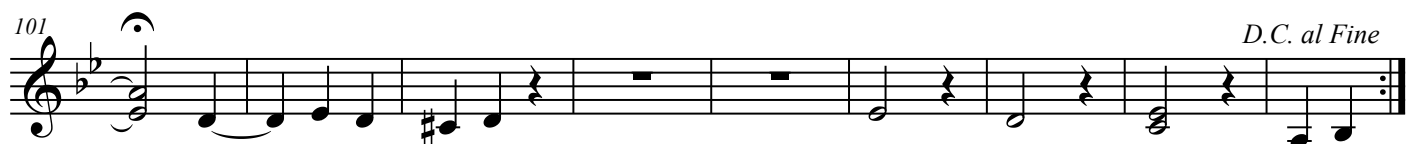
Staff 6: *p* *p*

Staff 7: *p* *f* 6

Staff 8: *p* *p*

Staff 9: *f* 6 6 6 *pp*

Minuet/Trio



Vivace

8

15

23

29

39

46

56

66

73

81

90

96

104

p

mf

tr

mp

Piu Allegro

110

118

125

131 **4**

141 *f*

148 **4**

158 *f*

164

Detailed description: This page of a musical score contains eight staves of music, numbered 110 to 164. The music is written in a single melodic line on a treble clef staff with a key signature of one flat (B-flat). The notation includes various rhythmic patterns such as eighth and sixteenth notes, rests, and dynamic markings. A '4' above a note in measure 131 indicates a quadruplet. A '4' above a note in measure 148 indicates another quadruplet. The dynamic marking 'f' (forte) appears in measures 141 and 158. The score concludes with a double bar line at measure 164.