

# Violoncelli

## Celeste

per orchestra d'archi

Franco Antonio Mirenyi

ottobre 2004

Moderato  $\text{♩} = 70$

19

Violoncelli



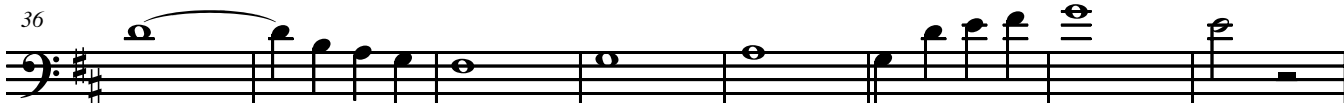
*mf*

Vc.



*f*

Vc.



*mf*

*p*

Vc.



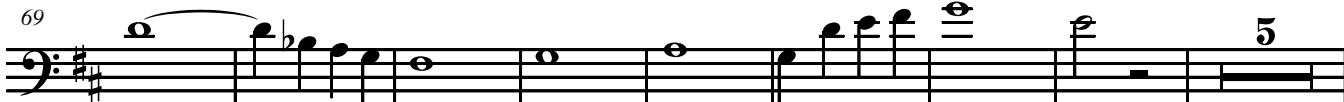
*mf*

Vc.



*f*

Vc.



*mf*

*p*

Vc.



91 Allegro in uno  $\text{♩} = 70$

3

Vc.



Vc.



Vc.



*f*

Vc.



*mf*

123

Vc.

*f* *mf*

137

Vc.

*p*

145

Vc.

*mf*

153

Vc.

*p*

161

Vc.

*mf*

169

Vc.

*p*

177

Vc.

*mf*

185

Vc.

*p*

193

Vc.

*mf*

201

Vc.

Sempre in uno  $\text{♩} = 70$

*mf*

207

Vc.

*p*

213

Vc.

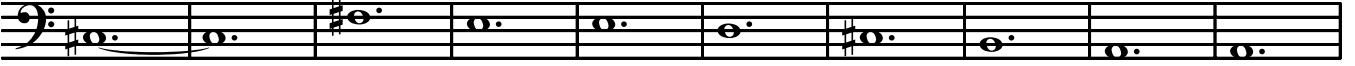
*p*

221

Vc.  *f* *mf*

Musical staff for measure 221, starting with a bass clef and a key signature of one sharp (F#). The staff contains a sequence of eighth notes followed by a series of dotted half notes. The dynamic marking *f* is placed below the first eighth notes, and *mf* is placed below the first dotted half note.

229

Vc. 


Musical staff for measure 229, starting with a bass clef and a key signature of one sharp (F#). The staff contains a sequence of dotted half notes.

239

Vc. 


Musical staff for measure 239, starting with a bass clef and a key signature of one sharp (F#). The staff contains a sequence of eighth notes, followed by a series of dotted half notes.

247

Vc.  *f*


Musical staff for measure 247, starting with a bass clef and a key signature of one sharp (F#). The staff contains a sequence of dotted half notes, each with a slur above it. The dynamic marking *f* is placed below the first dotted half note.

255

Vc. 


Musical staff for measure 255, starting with a bass clef and a key signature of one sharp (F#). The staff contains a sequence of dotted half notes, each with a slur above it, followed by a sequence of eighth notes.

263

Vc. 

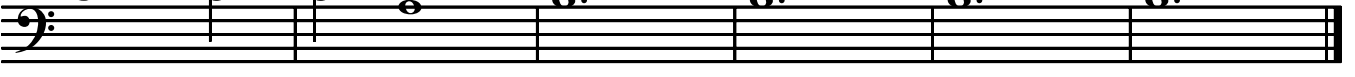
Musical staff for measure 263, starting with a bass clef and a key signature of one sharp (F#). The staff contains a sequence of dotted half notes.

271

Vc. 

Musical staff for measure 271, starting with a bass clef and a key signature of one sharp (F#). The staff contains a sequence of dotted half notes, followed by a sequence of eighth notes.

280

Vc. 

Musical staff for measure 280, starting with a bass clef and a key signature of one sharp (F#). The staff contains a sequence of dotted half notes, each with a slur above it.