

# PASTORALE

Euphonium Bb  
Largo

(Quartet from Concerto Grosso  
By Arcangelo Corelli 1653-1713)

Arranged for Brass Band  
by John Hind 2012

5

12/8

*p*

8

*f*

13

2

*f* *p*

16

*mf* *f*

19

*p*

21

*f* *mf*

24

*f*

27

**Poco Largamento**

*p* *f*

30

**a tempo**

*mf* *cresc.* *p*

Euphonium B $\flat$ 

33



37



41



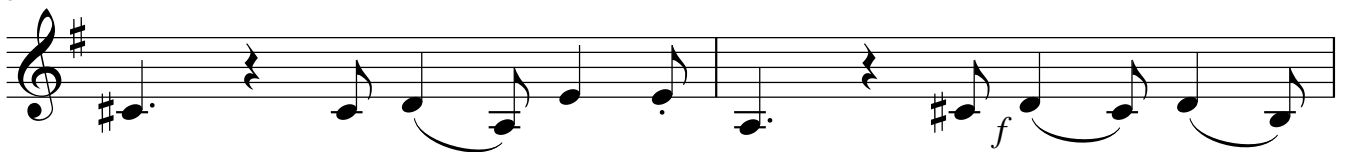
44



48



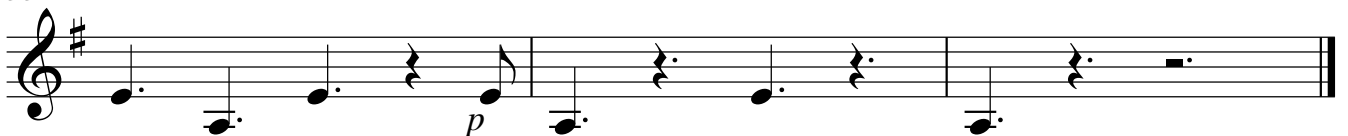
51



53



55



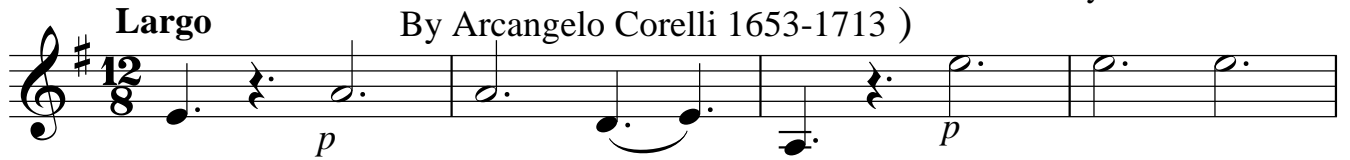
# PASTORALE

1st Baritone B $\flat$

(Quartet from Concerto Grosso  
By Arcangelo Corelli 1653-1713 )


Arranged for Brass Band  
by John Hind 2012

**Largo**

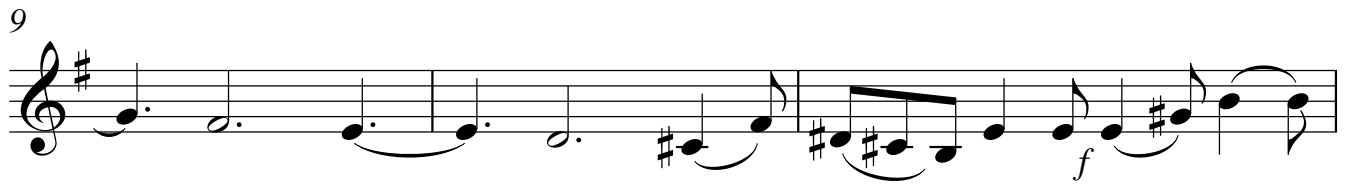


12

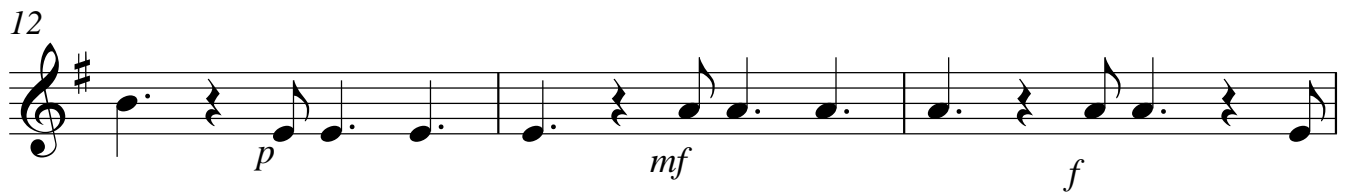
5



9



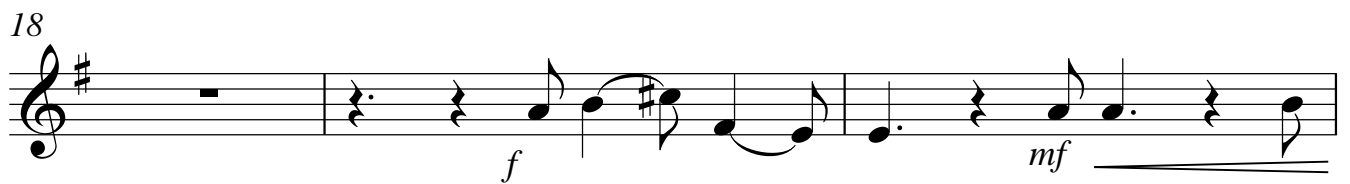
12



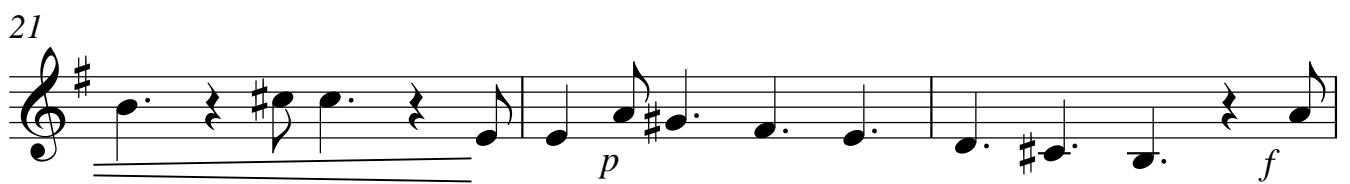
15



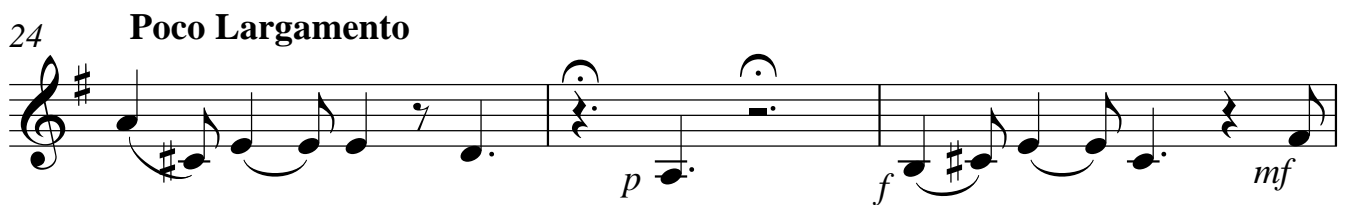
18



21



24 **Poco Largamento**



27 **a tempo**



1st Baritone B $\flat$ 

30

*p*

34

*mf* *p*

37

*p*

41

*p*

45

*f* *p*

48

*f*

51

*f*

54

*p*

56

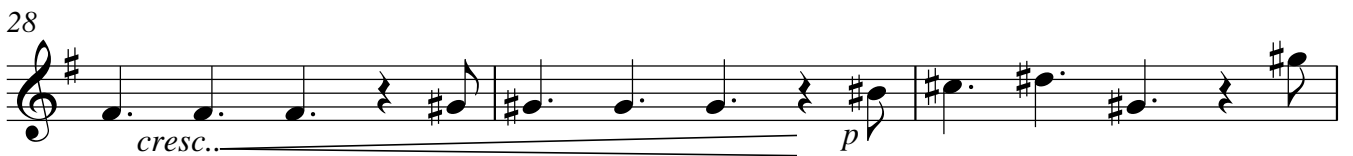
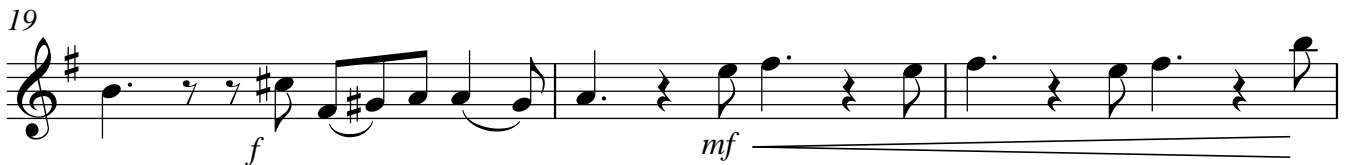
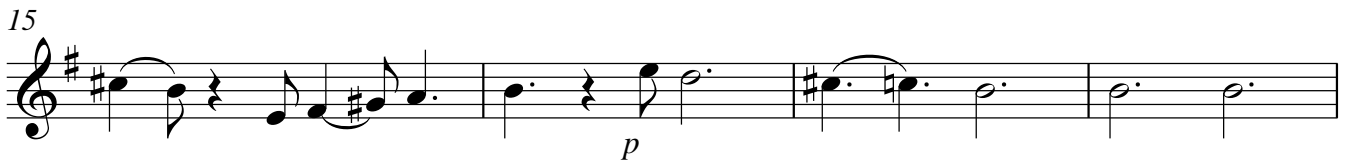
*p*

# PASTORALE

Solo Cornet B♭  
Largo

(Quartet from Concerto Grosso  
By Arcangelo Corelli 1653-1713)

Arranged for Brass Band  
by John Hind 2012



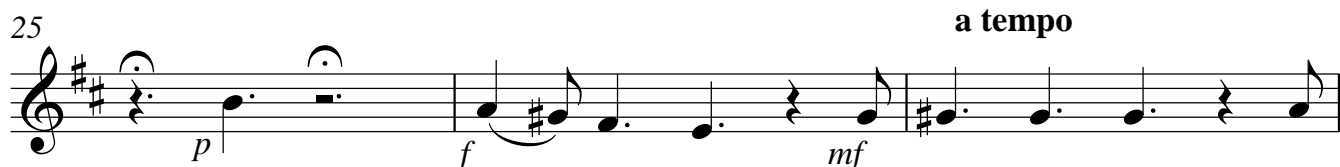
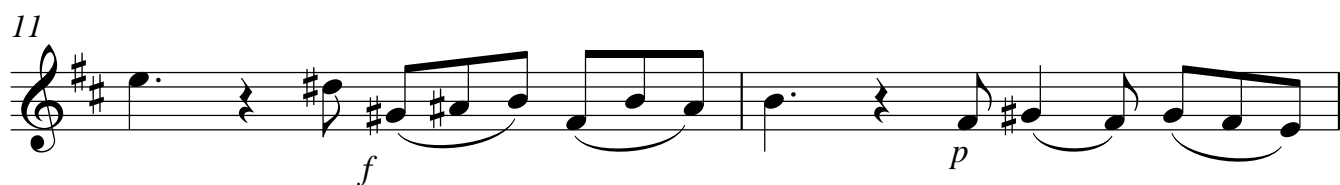
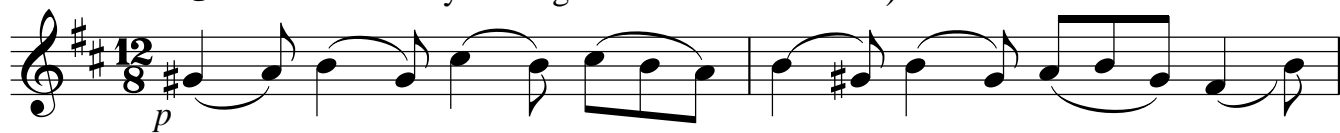


# PASTORALE

Soprano Cornet E $\flat$   
**Largo**

(Quartet from Concerto Grosso  
By Arcangelo Corelli 1653-1713 )

Arranged for Brass Band  
by John Hind 2012



## Soprano Cornet Eb

28



31



34



37



39



42



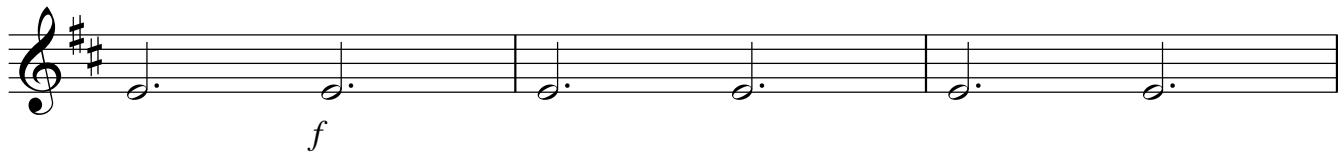
45



49



52



55

