

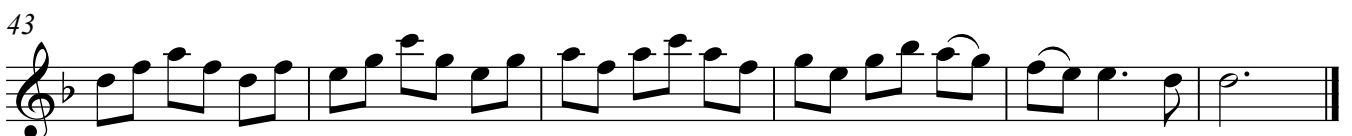
Recorder (S.T.)

LA FOLLIA

Recorder Sonata, Op. 5, No. 12

Arcangelo CORELLI
(1653-1713)

Adagio



49 **Var. 3**

53

58

62

65 **Var. 4**

70

75

81 **Var. 5**

88

92

97 Var. 6

100

103

106

109

113 Var. 7

120

125

Adagio
Var. 8

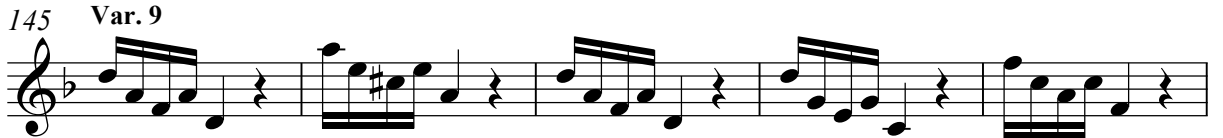
134



139



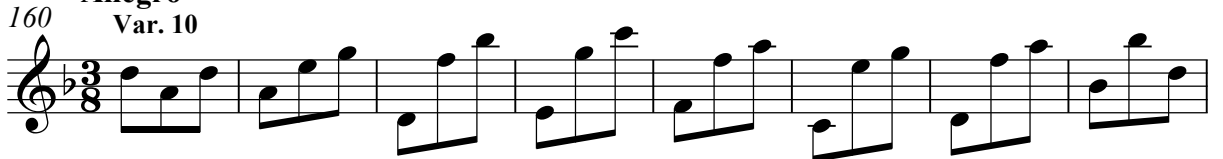
142

**Vivace**
Var. 9

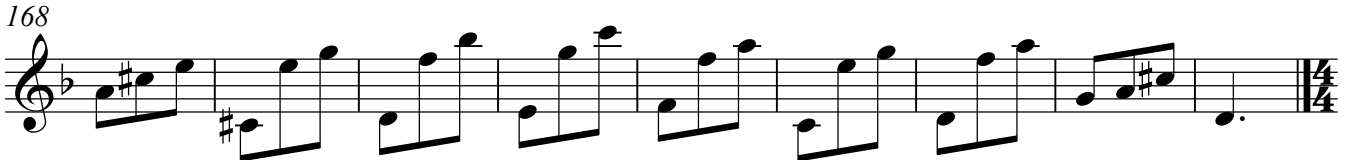
150



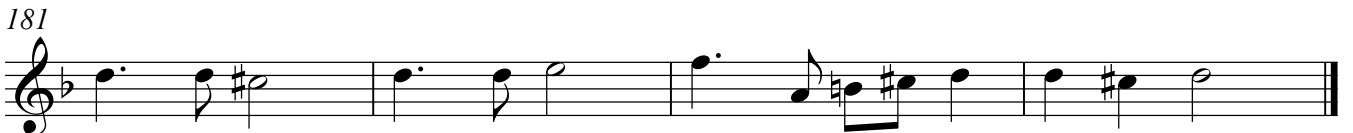
155

**Allegro**
Var. 10

168

**Andante**
Var. 11

181



Allegro

Recorder (S.T.)

185 **Var. 12**

Musical notation for Variation 12, measures 185-188. The key signature has one flat (B-flat), and the time signature is 12/8. The melody consists of eighth and sixteenth notes with various accidentals.

189

Musical notation for Variation 12, measures 189-192. The key signature has one flat, and the time signature is 12/8. The melody continues with eighth and sixteenth notes, ending with a double bar line and a repeat sign.

193 **Var. 13**

Musical notation for Variation 13, measures 193-194. The key signature has one flat, and the time signature is 12/8. The melody features eighth notes and a slur over a group of notes.

195

Musical notation for Variation 13, measures 195-196. The key signature has one flat, and the time signature is 12/8. The melody continues with eighth notes and a slur.

197

Musical notation for Variation 13, measures 197-198. The key signature has one flat, and the time signature is 12/8. The melody continues with eighth notes and a slur.

199

Musical notation for Variation 13, measures 199-200. The key signature has one flat, and the time signature is 12/8. The melody concludes with a double bar line and a 3/4 time signature change.

Adagio

201 **Var. 14**

Musical notation for Variation 14, measures 201-208. The key signature has one flat, and the time signature is 3/4. The melody is slower, featuring dotted half notes and whole notes.

209

Musical notation for Variation 14, measures 209-216. The key signature has one flat, and the time signature is 3/4. The melody continues with dotted half notes and whole notes, ending with a double bar line.

217 **Var. 15**

Musical notation for Variation 15, measures 217-224. The key signature has one flat, and the time signature is 3/4. The melody consists of quarter and eighth notes, ending with a double bar line.

225

Musical notation for Variation 15, measures 225-228. The key signature has one flat, and the time signature is 3/4. The melody continues with quarter and eighth notes, ending with a double bar line.

Allegro

Recorder (S.T.)

233 Var. 16



238



243



249 Var. 17



254



260



265 Var. 18



269



273



277



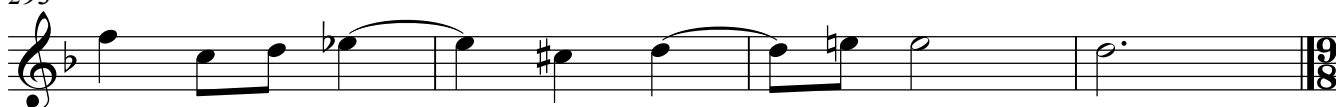
281 Var. 19



288



293



297 Var. 20



300



302



305 Var. 21



309



