

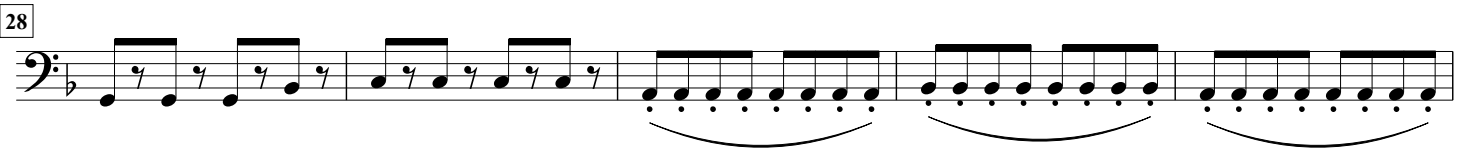
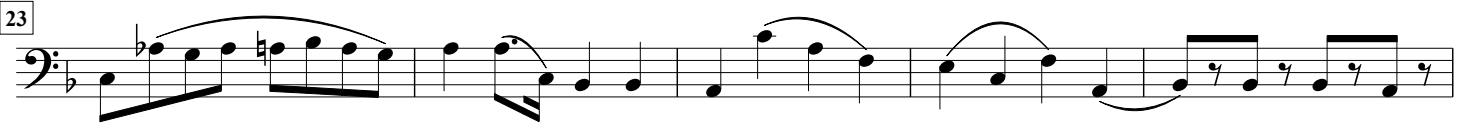
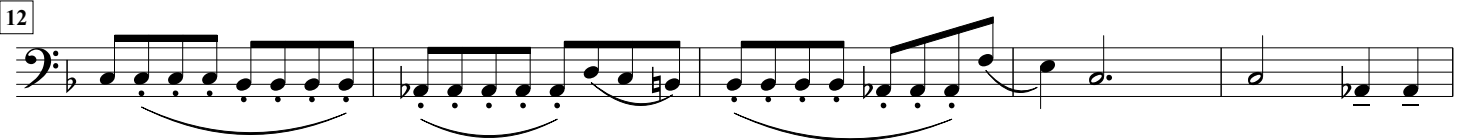
Sonate for Horn

arr. Hans Jorgen Messerschmidt

Luigi Cherubini (1760-1842)

Larghetto (♩=64)

Euphonium



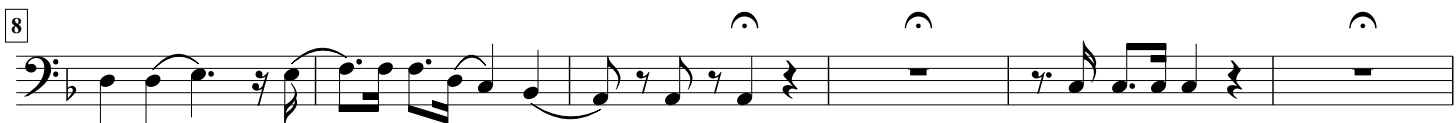
2

arr. Hans Jorgen Messerschmidt

Luigi Cherubini (1760-1842)

Largo (♩=56)

Euphonium



110

Euphonium

Musical notation for Euphonium, measures 110-113. The notation is in bass clef with a key signature of one flat. Measure 110 consists of a descending eighth-note scale: G2, F2, E2, D2, C2, B1, A1, G1. Measure 111 begins with a quarter rest, followed by a quarter note G1, then a quarter note F1 with a slur over a sixteenth-note pair (E1, D1). Measure 112 begins with a quarter rest, followed by a quarter note G1, then a quarter note F1 with a slur over a sixteenth-note pair (E1, D1). Measure 113 begins with a quarter rest, followed by a quarter note G1, then a quarter note F1 with a slur over a sixteenth-note pair (E1, D1). The piece concludes with a quarter note G1 and a final bar line.