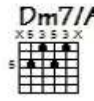
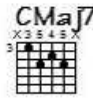
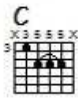


# Swing 5W

Basse

Thierry Chauve

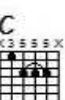


Tab

5 5 0 3 5 5



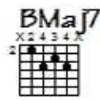
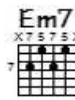
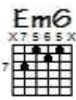
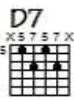
5 0 5 5 2 2 0 2 0



5 5 3 5 5



2 0 5 0 5 2 2



Tab

2 2 2 0 2 2 2 5 5



6 5 0 5 5 4 5 7



5 5 0 0 5



0 2 0 5 5 2 2 0 2 0

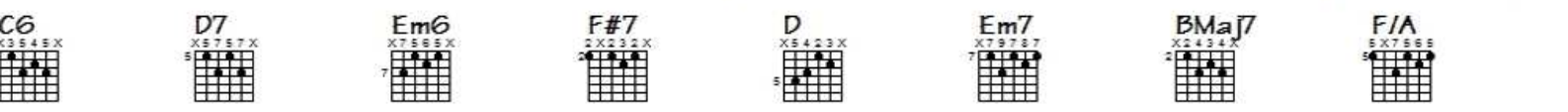


5 0 3 0 5 5



Tab

0 5 5 2 0 2 0



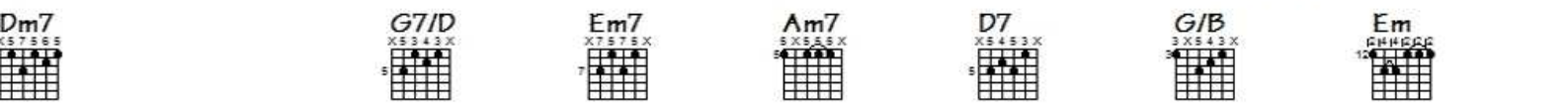
0 0 2 2 7 5 5



6 6 6 5 5 3 3 5 3 5 5 7



3 5 0 0 0 5



0 2 0 5 2 0

**C** X3555X  
**Dm7** X5353X  
**Dm7** X57555  
**G7/D** X5343X  
**CMaj7** X3545X  
**Dm7/A** X57555  
**C/E** X7555X  
**Am7** 5X555X

Tab

5 0 0 5

**Dm7** X57555  
**G7/D** X5343X  
**Em7** 12X066X  
**Am7** 5X555X  
**D7** X5453X  
**G/B** 3X543X  
**Em** 2X22XX

5 5 0 2 0 5 5 2 2 2 0

3

**C6** X3545X  
**D7** X5453X  
**Em6** X7565X  
**F#7** 2X232X  
**D** X5423X  
**Em7** 12X066X  
**BMA7** X2434X  
**F/A** 5X7565

3 0 0 2 0 2 2 5 5

**BbMA7** 1323X  
**F/C** 8X7565  
**Am7** 5X555X  
**Gm** 355333  
**Dm/A** 5X776X  
**Gm6** 3X233X  
**A** 5X765X  
**Em** 7X755X

6 6 6 4 5 3 3 5 4 5 0 2 0

**C** X3555X  
**Dm7** X5353X  
**Dm7** X57555  
**G7/D** X5343X  
**CMaj7** X3545X  
**Dm7/A** X57555  
**C/E** X7555X  
**Am7** 5X555X

3 5 5 0 5 5



Tab

0 2 0 5 0 5 2 2 0

C Dm7 Dm7 G7/D Cmaj7 Dm7/A C/E Am7

5 2 0 0 5

Dm7 G7/D Em7 Am7 D7 G/B Em

5 4 5 5 2 2 2 0 2 2 0

C6 D7 Em6 F#7 D Em7 Bmaj7 F/A

3 0 0 2 0 2 2 0 2 2 5

Bbmaj7 F/C Am7 Gm Dm/A Gm6 A Em

6 6 6 5 3 3 5 5 0 5

Tab

The image shows a musical score snippet. At the top, there is a section labeled 'Tab' with two empty staves. Below this, there is a bass clef on a staff with a single note on the second line (F2) and a bar line at the end of the staff.