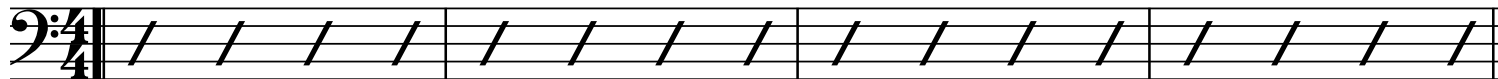


# Sweet Lorraine


Trombone

Musique de Cliff Burwell  
Arrangements de Thierry Chauve

G G#DIM Am C DIM Em A7 D7



G G#DIM Am D C DIM Em A7




5b

D7 Gb Bm A7 D7




G G#DIM Am D C DIM Em Am<sup>b</sup> B7




13a

Em A7 C<sup>b</sup> D7

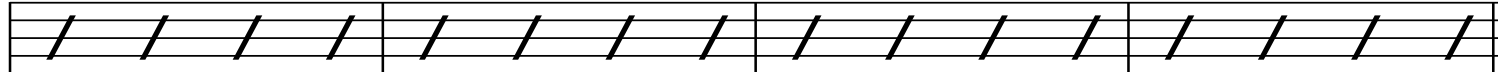


G G#DIM Am D C DIM Em A7




21b

D7 Gb Bm A7 D7




G G#DIM Am D C DIM Em Am<sup>b</sup> B7



29a

Em A7 C<sup>b</sup> D7 D7+



G E7 Am7 D7 Em C7 B7

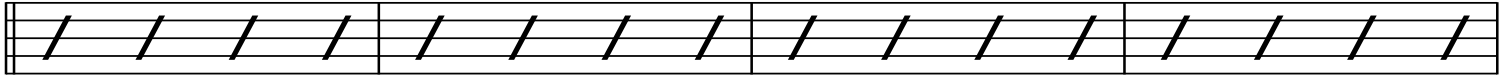


37b

E7 A7 D7 G Em7 Am7 D7 D7+



G E7 Am7 D7 Em C7 B7



45a

E7 A7 D7 G Dm7 G7

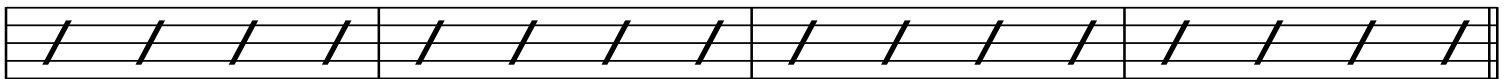


C E7 Am C7 F E7 Am C7



53b

F7 E7 Eb7 D7 F7 E7 Eb7 D7 D7+



G E7 Am7 D7 Em C7 B7



61a

E7 A7 D7 G



G E7 Am7 D7 Em C7 B7

E7 A7 D7 G Em7 Am7 D7 D7+

77a

Chords: G, E7, Am7, D7, Em, C7, B7, E7, A7, D7, G, Dm7, G7

The image shows a musical score for two staves. The top staff is in bass clef and contains the following notes and chords: G (quarter), E7 (quarter), Am7 (quarter), D7 (quarter), Em (quarter), C7 (quarter), B7 (quarter), and a final chord (quarter). The bottom staff is in treble clef and contains the following notes and chords: E7 (quarter), A7 (quarter), D7 (quarter), G (quarter), Dm7 (quarter), and G7 (quarter). The score includes various musical notations such as slurs, ties, and triplets.