

Silent Flower

Sax Soprano en Sib

Musique de Thierry Chauve

Chord progression for Sax Soprano in B-flat, 4/4 time signature. The score consists of 12 measures, grouped into four systems of three measures each. Each measure contains a slash (/) on a five-line staff, indicating a placeholder for a melodic line. Chord symbols are written above the staves.

Measure 1: G_m

Measure 2: E_m^{7b5}

Measure 3: A_m^{7b5}/E_b

Measure 4: D^{7b9}/E_b

Measure 5: D^7

Measure 6: G_m^7

Measure 7: E_m^{7b5}

Measure 8: C_m^7/E_b

Measure 9: F^9/E_b

Measure 10: G_m

Measure 11: E_m^{7b5}

Measure 12: A_m^{7b5}/E_b

9b

Measure 13: D^{7b9}/E_b

Measure 14: D^7

Measure 15: G_m^7

Measure 16: E_m^{7b5}

Measure 17: C_m^7/E_b

Measure 18: F^9/E_b

Measure 19: F_m^7/E_b

Measure 20: D_{dim}

Measure 21: E_b^7

17a

Measure 22: E_{dim}

Measure 23: D_b^7/E

Measure 24: $F\#^7b9/E$

Measure 25: B_m/D

Measure 26: E_m

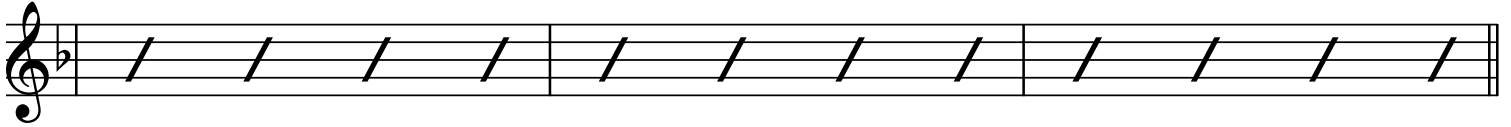
Measure 27: A^7

Measure 28: D_m^7

Em7b5

Cm7/Eb

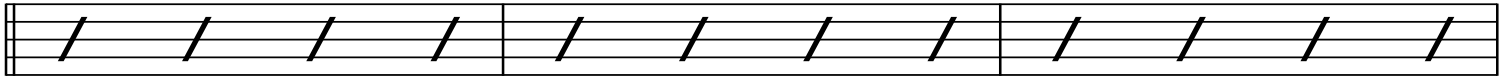
F9/Eb



Fm7/Eb

Ddim

Ebm7



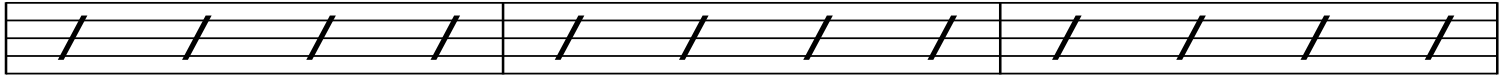
29b

EDim

Dbm7/E

F#7b9/E

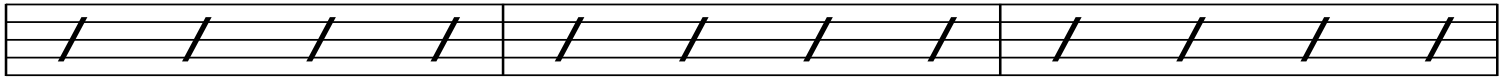
Bm/D



Em

A7

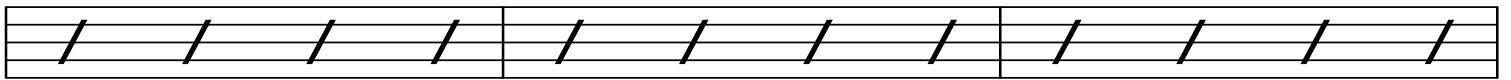
Dm7



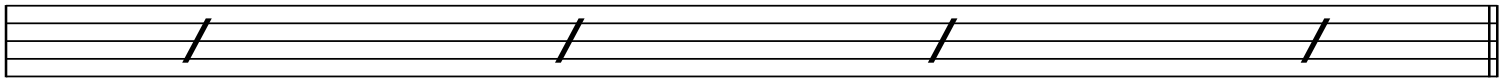
Em7b5

Cm7/Eb

F9/Eb



Bb/D



Gm

3

Em7b5

Am7b5/Eb



D7b9/Eb

D7

Gm7

Em7b5



Cm7/Eb

F9/Eb



Fm7/Eb

3

3

3

Ddim

Ebm7

3



50b

Handwritten musical score for guitar in E minor, featuring three staves of music. The score includes various chords and triplets:

- Staff 1: E_{dim} , $D^{\flat}m^7/E$, $F^{\#7b9}/E$, Bm/D
- Staff 2: E_m , A^7 , Dm^7
- Staff 3: E_m^7b5 , Cm^7/Eb , F^9/Eb

The music consists of three staves of notation. The first staff begins with a treble clef and a key signature of one flat (B minor). It features a triplet of eighth notes (F#, G, A) followed by a quarter note (B), then a descending eighth-note line (A, G, F, E), and a quarter note (D). The second staff continues with a triplet of eighth notes (F#, G, A), a quarter note (B), a half note (C), and a triplet of eighth notes (D, E, F). The third staff starts with a quarter note (G), a quarter note (F), and a quarter note (E), followed by a triplet of eighth notes (D, C, B), a triplet of eighth notes (A, G, F), and a triplet of eighth notes (E, D, C).