

D.S.F.

Sax soprano en Sib

Musique de thierry Chauve
Paroles de Michel Gouaud

Handwritten musical notation for Sax soprano in B-flat, consisting of 11 staves of music. Each staff contains a treble clef, a 4/4 time signature, and a key signature of one flat (B-flat). The notation is represented by diagonal slashes within the staff lines. Chord symbols are written above the staves.

Staff 1: D_M G_M/D D_M

Staff 2: A^7 G/B C

Staff 3: D_M^7 G^7 E_M^7/G

Staff 4: E_M^{7b5}/G

Staff 5: A^7 D_M C

Staff 6: D^7 G B_M

Staff 7: $F\#^7/C\#$ $A^7/C\#$

Staff 8: D_M A^7 G/B

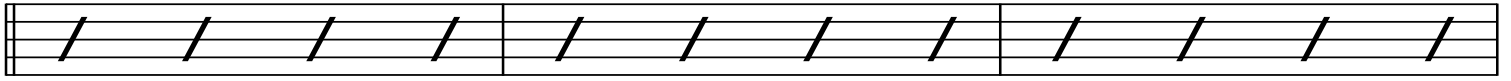
Staff 9: C D_M^7 G^7

Em⁷/G

Em^{7b5}/G

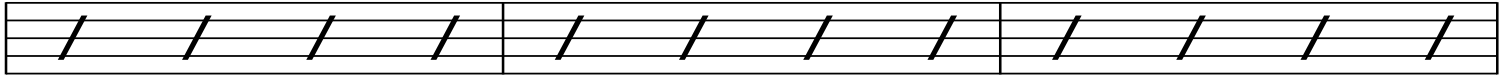


A⁷ D_M C

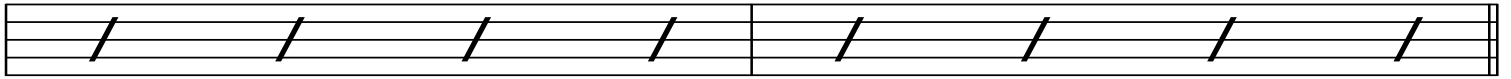


27b

D⁷ G B_M



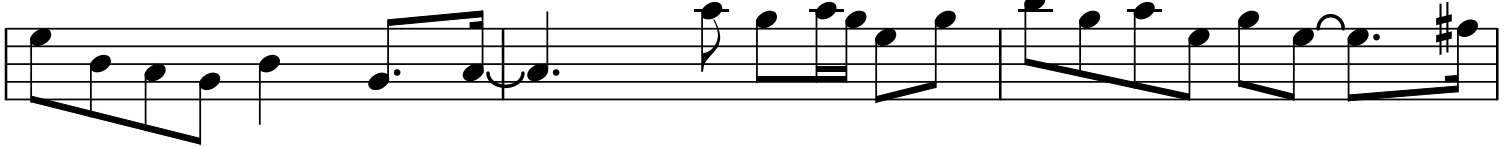
F^{#7}/C[#] A⁷/C[#]



D_M A⁷ G/B



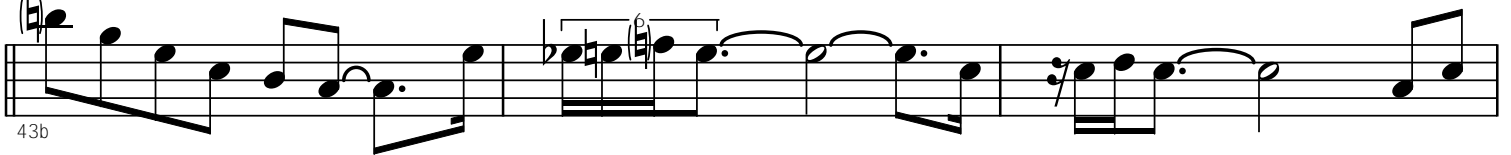
C D_M⁷ G⁷



Em⁷/G Em^{7b5}/G



A⁷ D_M C



43b

D⁷ G B_M

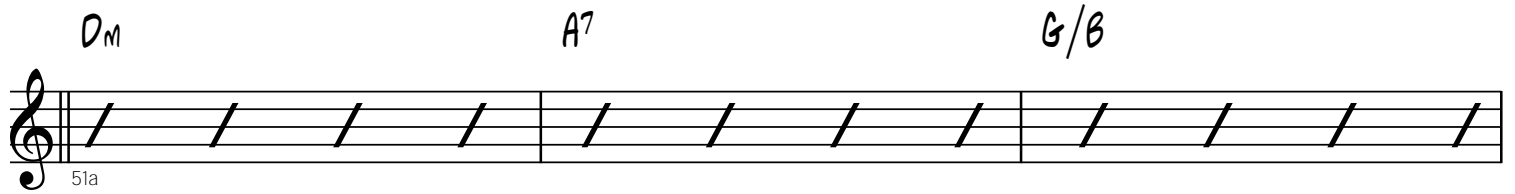


F^{#7}/C[#] A⁷/C[#]

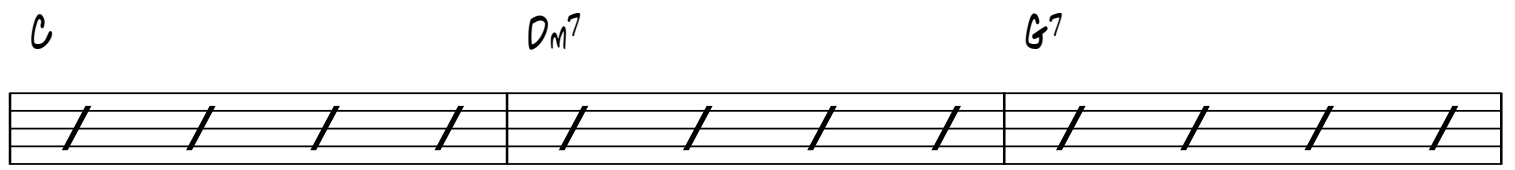


51a

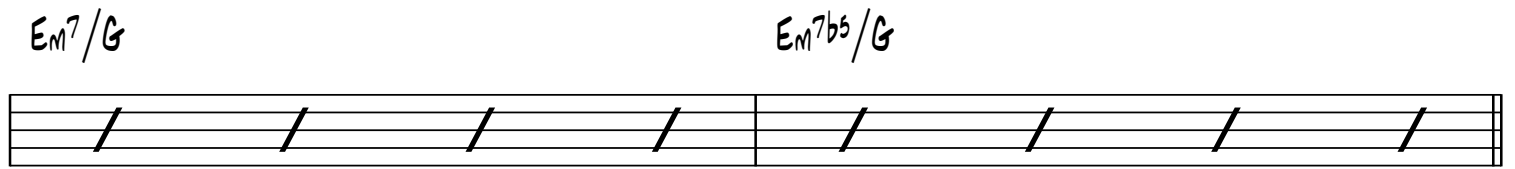
D_m *A⁷* *G/B*



C *D_m⁷* *G⁷*




E_m⁷/G *E_m⁷b⁵/G*

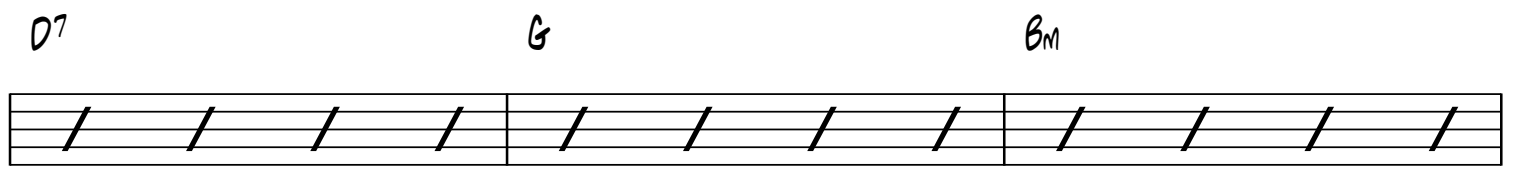


A⁷ *D_m* *C*

59b



D⁷ *G* *B_m*



F⁷/C[#] *A⁷/C[#]* *D*

