

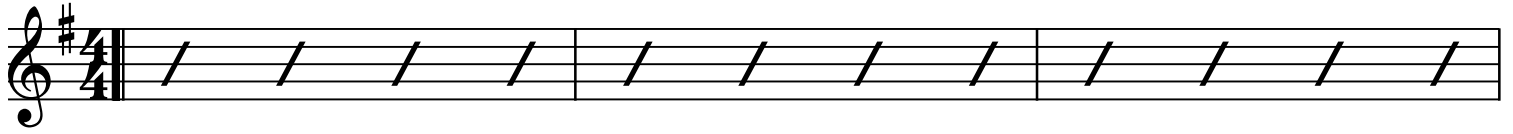
# Partager l'Univers

Sax soprano en Sib

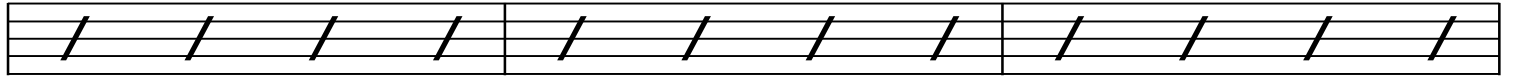
Paroles de Michel Gouaud  
Musique de Thierry Chauve

G

C

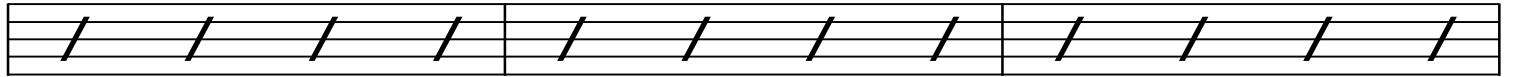


G



D7

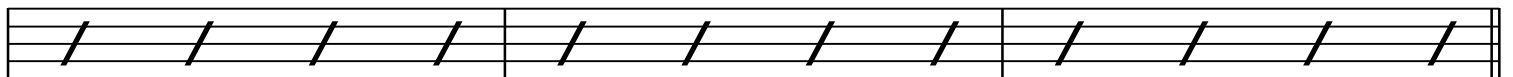
Em



Am7

E

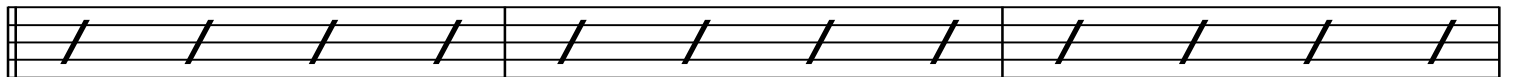
E/D



C

FMaj7

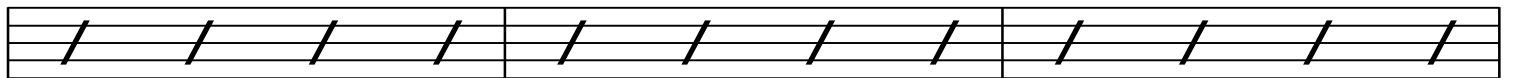
G7



13b

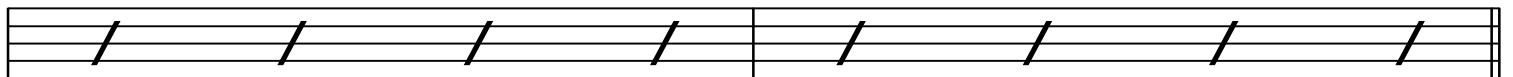
CMaj9

F



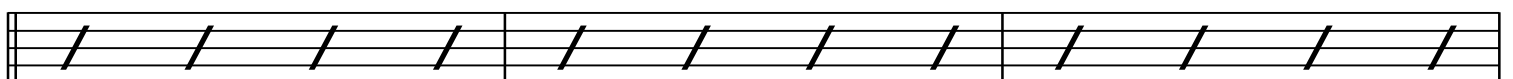
Esus/A

E



A

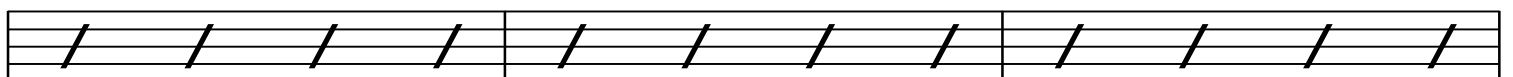
E7



21a

F#m

Bm



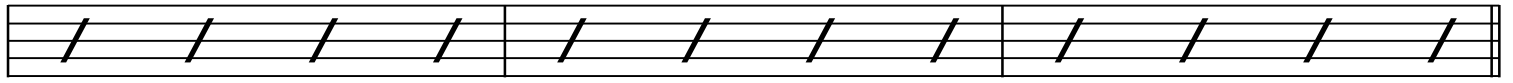
F#7

D



A7

D



G

D7



Em

Am7



E

E/D



C

FMaj7

G7



41a

CMaj9

F



Esus/A

E



A

E7



49b

F#m

Bm



F#7 D

G D7

61a

Em Am7

E E/D

C FMaj7 G7

69b

CMaj9 F

Esus/A E

A E7

77a

F#m Bm

The image shows two staves of musical notation. The top staff begins with a treble clef and a key signature of one sharp (F#). It contains three measures of music, each with a slash indicating a chord. The first measure is labeled 'F#7', the second 'A7', and the third 'D'. The bottom staff also contains three measures of music, each with a slash indicating a chord. The first measure is labeled 'A7' and the second 'D'. The third measure is unlabeled but contains a slash. The notation is minimalist, focusing on chord placement and timing.