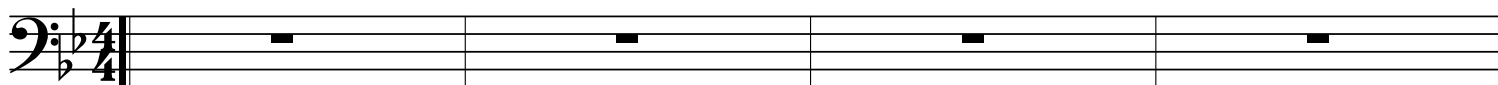


Lune d'Eté

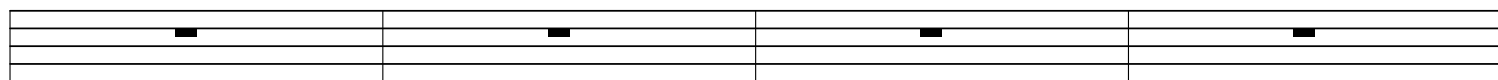
Cordes

Musique de Thierry Chauve

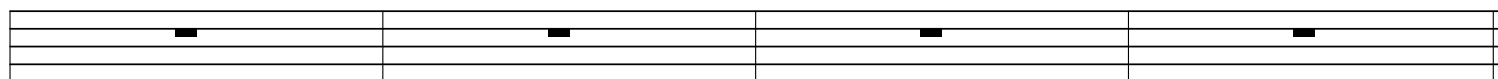
E_b F^{m7} E_b A_b B_b7 E_b B_b7F₇ B_b



F₇ G_{m7} F₇ B_b C_{m7} F₇ G_{m7} C_{m7} F₇ B_b

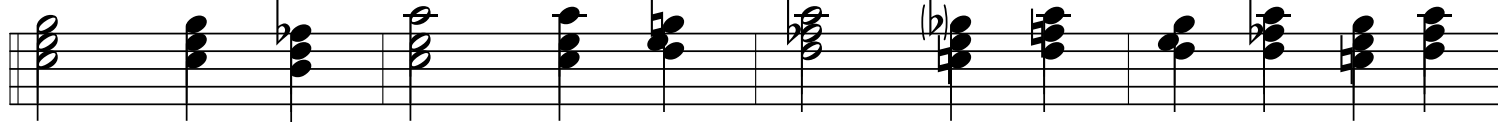


E_b F_m B_b7 A_b E_b A_b B_b7 E_b

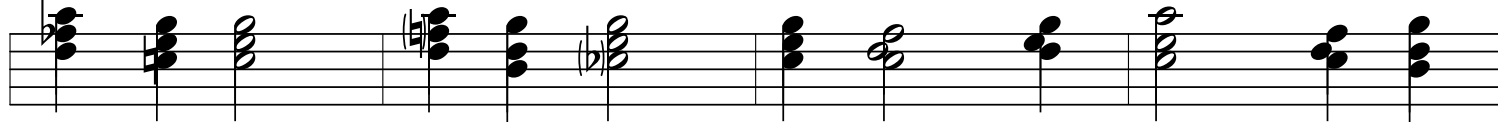


13b

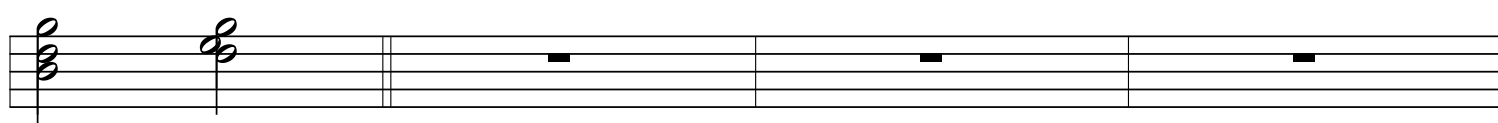
B_b9 C_m G₇ F_m C₇ F G^{m7} F_m C₇ F_m



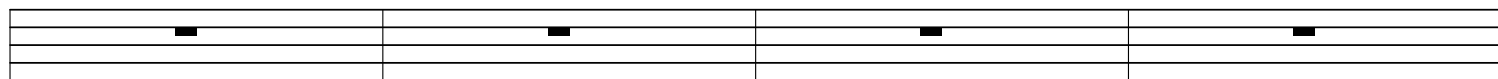
C₇ F B_b C_{m7} F₇ G^{m7} C_m F₇ B_b



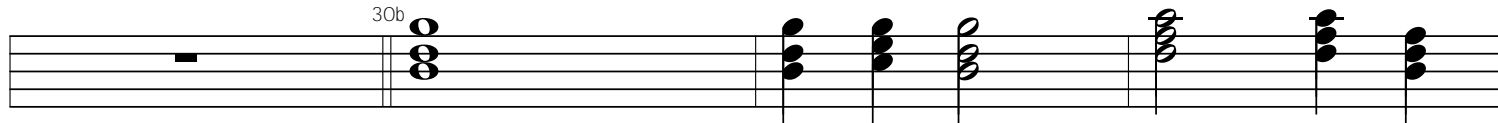
G_{m7} E_b F^{m7} E_b A_b B_b7 E_b



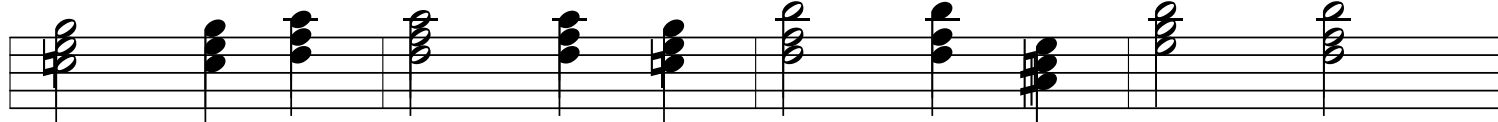
B_b7 F₇ B_b F₇ G_{m7} F₇ B_b C_{m7} F₇ G_{m7}



C_{m7} F₇ B_b B_b E_b B_b F B_b^{Maj7}



C₇ F C₉ D_m A₇ G_m D_m



E^{m7b5} D^{m7} A7 Dm G7 C F F7 Bb_{40a}

Eb Bb F Bb^{Maj7} C7 F C9

Dm A7 Gm Dm E^{m7b5} D^{m7} A7 Dm G7

C F F7 Bb EbMaj7 F7 Bb

Eb