

Images of Piccadilly

Trombone

Musique de Thierry Chauve

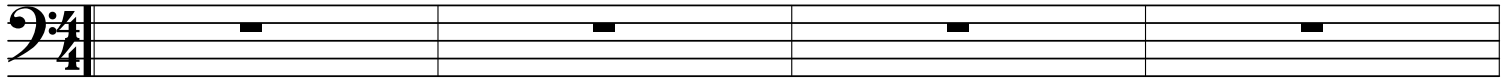
G

C

G

D7

G



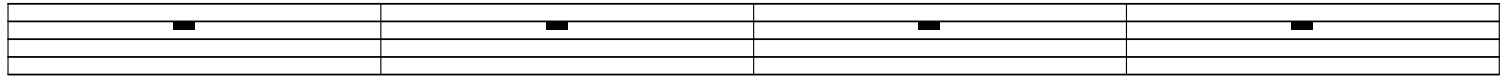
Am

D7

G

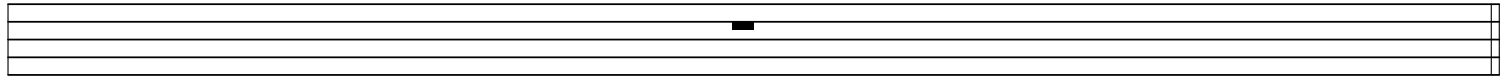
C

Dm7



G

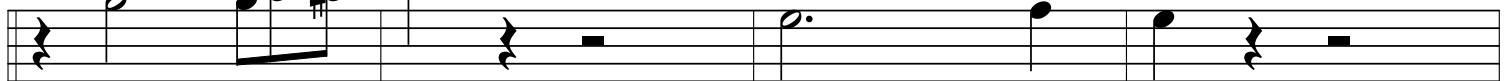
D13sus/C



G/B

C6/G

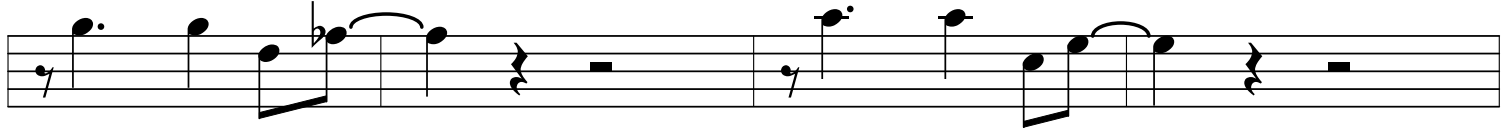
10b



G9/B

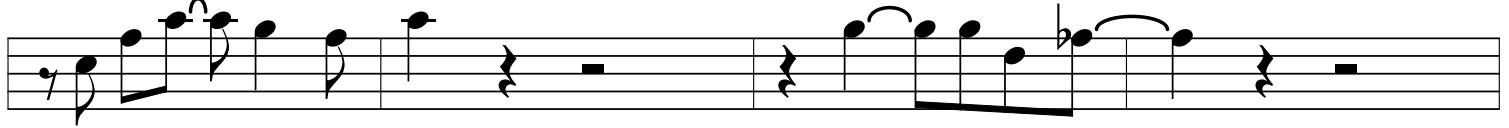
G7b9/B

C



Am7

DDim/A



Dm7



G

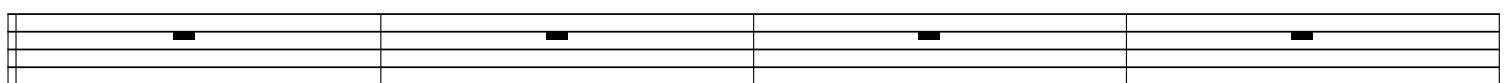
C

G

D7

G

24a



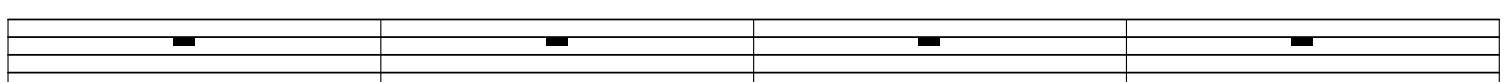
Am

D7

G

C

Dm7



G

D13sus/C

A single bass clef staff containing a whole rest.

G/B

C6/G

A musical staff with a treble clef. It contains a sequence of notes: G4, A4, B4, C5, B4, A4, G4. The first three notes are slurred together. There is a fermata over the G4 note. This is followed by a whole rest, then a quarter note G4, a quarter note F4, a quarter note E4, a quarter note D4, and another whole rest.

G9/B

G7b9/B

C

A musical staff with a treble clef. It contains a sequence of notes: G4, A4, B4, C5, B4, A4, G4. The first three notes are slurred together. There is a fermata over the G4 note. This is followed by a whole rest, then a quarter note G4, a quarter note F4, a quarter note E4, a quarter note D4, and another whole rest.

Am7

DDim/A

A musical staff with a treble clef. It contains a sequence of notes: G4, A4, B4, C5, B4, A4, G4. The first three notes are slurred together. There is a fermata over the G4 note. This is followed by a whole rest, then a quarter note G4, a quarter note F4, a quarter note E4, a quarter note D4, and another whole rest.

Dm7

A musical staff with a treble clef. It contains a sequence of notes: G4, A4, B4, C5, B4, A4, G4. The first three notes are slurred together. There is a fermata over the G4 note. This is followed by a whole rest, then a quarter note G4, a quarter note F4, a quarter note E4, a quarter note D4, and another whole rest.

G

C

G

D7

G

A musical staff with a treble clef. It contains four whole rests, one in each measure.

Am

D7

G

C

Dm7

A musical staff with a treble clef. It contains four whole rests, one in each measure.

G

D13sus

G/B

D7

G

Am6

A musical staff with a treble clef. It contains four whole rests, one in each measure.