

Groove bleu

Flûte

Musique de Thierry Chauve

Handwritten musical notation for Flute in 4/4 time, consisting of 17 measures. The notation is organized into pairs of staves, with chords written above each staff. The chords are: $E_{M^9}b^5$, A^9+/G , $D_{M^9}b^5/F$, $G^7\#5\#9/F$, $C_{M^6}b^9/G$, $F^7\#5\#9/E^b$, $B^bM^A^J^7/D$, G^M^7/D , G^M^7/F , $E_{M^9}b^5$, A^9+/G , $D_{M^9}b^5/F$, $G^7\#5\#9/F$, $C_{M^6}b^9/G$, $F^7\#5\#9/E^b$, F^M^7/E^b , E^7b^9/D , $E^bM^M^A^J^7$, and $E^b_{M^M}M^A^J^7$. Each staff contains four diagonal slashes representing notes. The first staff begins with a treble clef and a 4/4 time signature. The notation is divided into two systems of eight measures each, with the final measure of the second system being a double bar line.

9b

17a

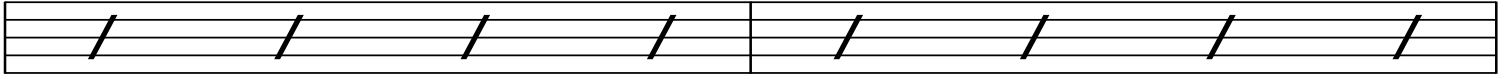
Ab⁷ sus

Dm⁷



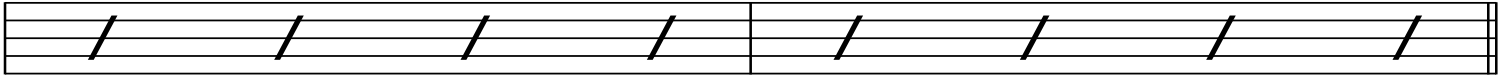
G7#5#9

Em⁹b5



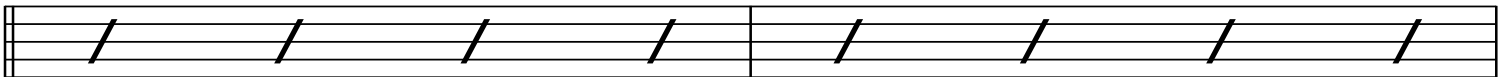
Cm⁷/Eb

F7#11/Eb



EbmA5⁷

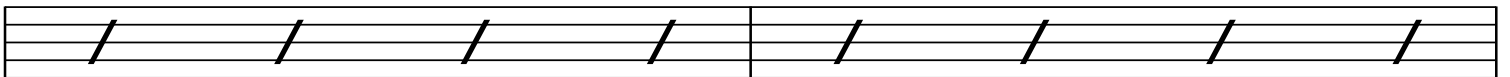
EbmMA5⁷



25b

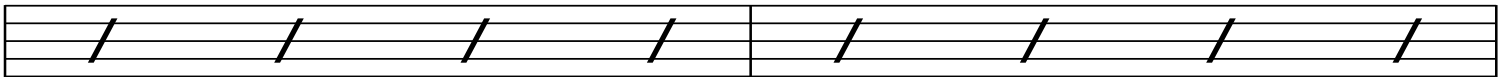
Ab⁷ sus

Dm⁷



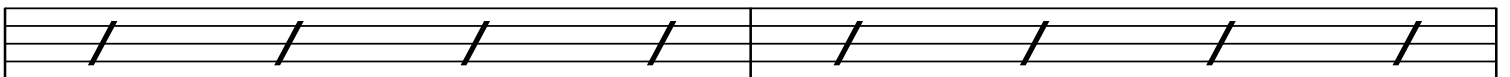
G7#5#9

Em⁹b5



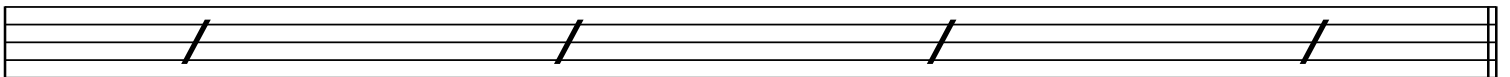
Cm⁷/Eb

F7#11/Eb



BbADD²/D

Bb



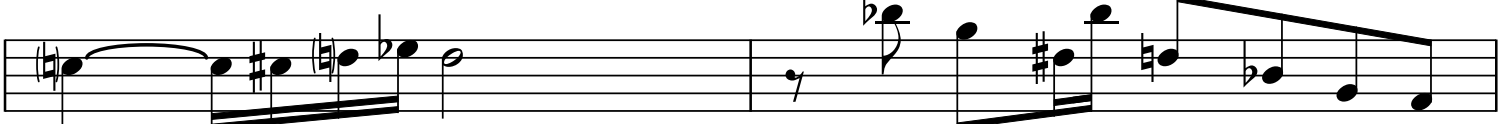
Em⁹b5

A9+/G



Dm⁹b5/F

G7#5#9/F



Handwritten musical score for guitar, featuring various chords and melodic lines across ten systems. The notation includes treble and bass clefs, stems, beams, and accidentals.

System 1: Treble clef. Chords: Cm^{69}/G , $F7\#5\#9/Eb$.

System 2: Treble clef. Chords: $BbMA5^7/D$, Gm^7/D , Gm^7/F .

System 3: Treble clef. Chords: Em^9b5 , $A9+/G$. Includes triplets and a 42b fret marking.

System 4: Treble clef. Chords: Dm^9b5/F , $G7\#5\#9/F$.

System 5: Treble clef. Chords: Cm^{69}/G , $F7\#5\#9/Eb$.

System 6: Treble clef. Chords: Fm^7/Eb , $E7b9/D$. Includes a 50a fret marking.

System 7: Treble clef. Chords: $EbmA5^7$, $EbmMA5^7$.

System 8: Treble clef. Chords: Ab^7sus , Dm^7 .

System 9: Treble clef. Chords: $G7\#5\#9$, Em^9b5 .

System 10: Treble clef. Chords: Cm^7/Eb , $F7\#11/Eb$.

Handwritten musical notation on a four-staff system. The notation includes various chords and melodic lines.

Staff 1: $EbMAJ7$ (58b) | $EbMMAJ7$

Staff 2: $A\flat7sus$ | $Dm7$

Staff 3: $G7\#5\#9$ | $Em9\flat5$

Staff 4: $Cm7/E\flat$ | $F7\#11/E\flat$