

First Spring

Trompette en Sib (solo)

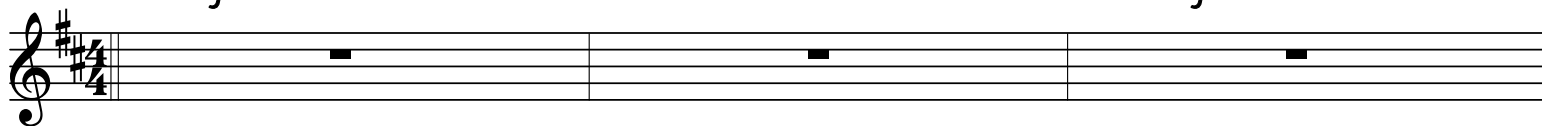
Musique de Thierry Chauve

Tempo = 185

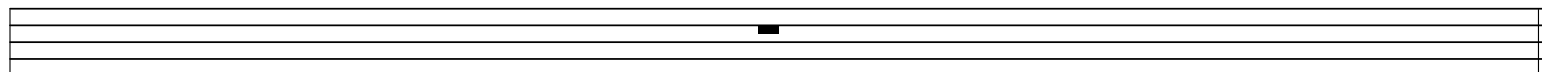
DMaj7

B7

BbMaj7



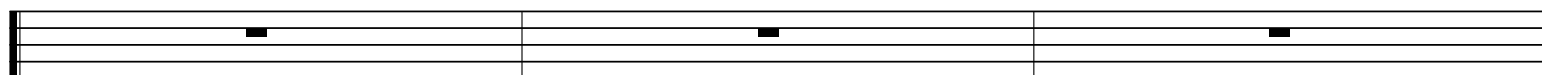
A13



D6

G7

D7



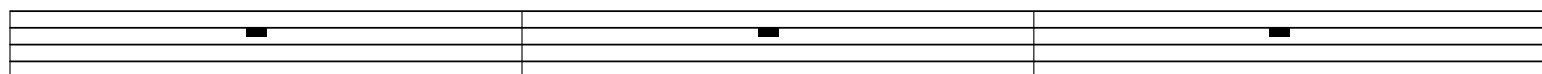
Am7

D7

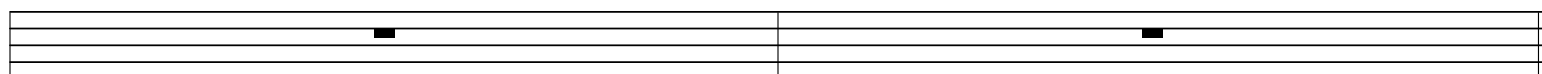
GMaj7

Em7

A7



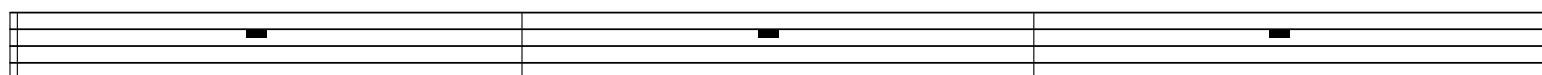
D69



D6

G7

D7



Am7

D7

GMaj7

Em7

A7



D69/A



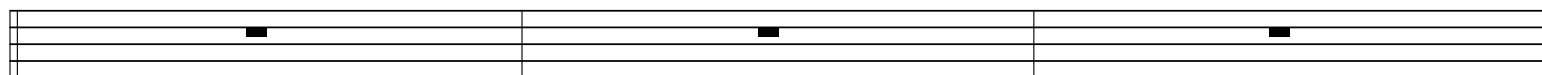
Em7

A9

D6

Em7

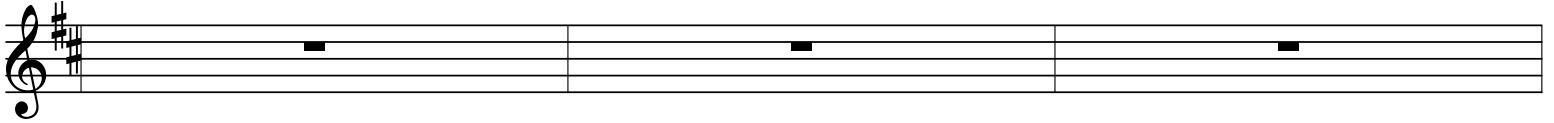
A7



D69

G#m7b5

C#7b9

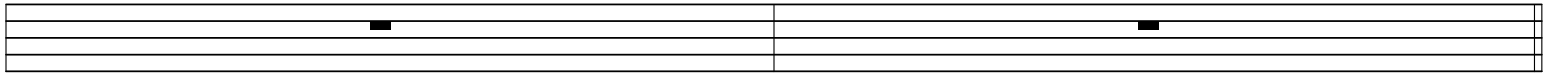


F#m7

B7

Em7

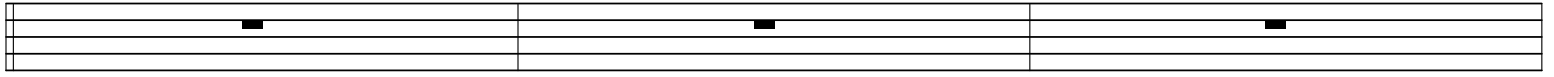
A7



D6

G7

D7



Am7

D7

GMaj7

Em7

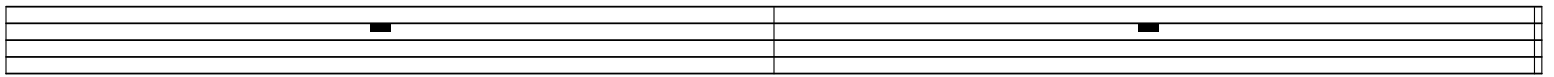
A7



D69/A

A13

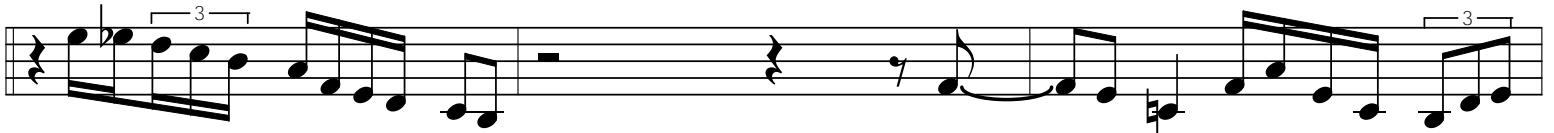
D6



D6

G7

D7



Am7

D7

GMaj7

Em7

A7



D69/A



Em7

A9

D6

Em7

A7



D69

G#m7b5

C#7b9



Musical notation for the piece "First Spring". The score is written on a single staff in treble clef with a key signature of one sharp (F#). The piece consists of four measures. The first measure contains a quarter note G4, a quarter note A4, and a quarter note B4, with the chord F#m7 indicated above. The second measure contains a triplet of eighth notes (G4, A4, B4) followed by a quarter note C5, with the chord B7 indicated above. The third measure contains a quarter note C5, a quarter note B4, and a quarter note A4, with the chord Em7 indicated above. The fourth measure contains a whole note G4, with the chord A7 indicated above. The piece concludes with a double bar line.